



# Certificate of Analysis

## Thaw and Culture Details

Cell Line Name	<b>BCHi015-A-2</b>	
WiCell Lot Number	<b>DB68704</b>	
Provider/Client	Boston Children's Hospital – Dr. Elizabeth Buttermore	
Banked By	Boston Children's Hospital – Dr. Elizabeth Buttermore	
Thaw and Culture Recommendations	WiCell recommends thawing 1 vial into 5 wells of a 6 well plate using mTeSR™Plus and Matrigel®. WiCell recommends thawing using ROCK Inhibitor for best results.	
Protocol	WiCell Feeder Independent Pluripotent Stem Cell Protocol	
Culture Platform Prior to Freeze	Medium: StemFlex™	Matrix: Matrigel®
Passage Number	p18 Cells were cultured for 18 passages prior to freeze and post reprogramming. Plated cells at thaw should be labeled passage 19.	
Date Vialied	16-March-2025	
Vial Label	HNDS0138-01B CNC42 (+/-) P18 1 VIAL = 10CM DWW 03/16/2025	
Biosafety and Use Information	Appropriate biosafety precautions should be followed when working with these cells. The end user is responsible for ensuring that the cells are handled and stored in an appropriate manner. WiCell is not responsible for damages or injuries that may result from the use of these cells. Cells distributed by WiCell are intended for research purposes only and are not intended for use in humans.	



# Certificate of Analysis

## Results

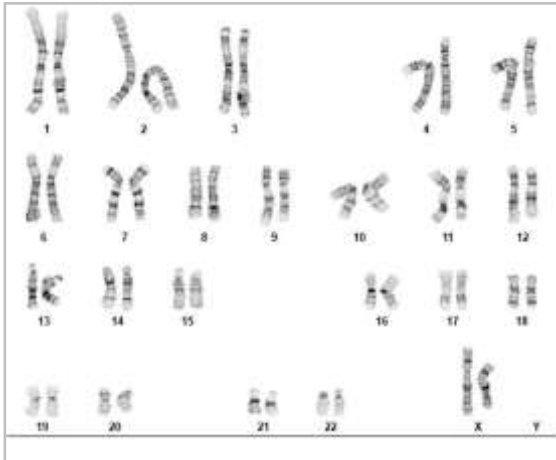
Test Description	Test Provider	Test Method	Test Specification	Result
Karyotype	WiCell	G-T-L Banding performed on 20 metaphase cells	Expected karyotype	See Report
	<b>Results:</b> 46,XX <b>Interpretation:</b> This is a normal karyotype; no clonal abnormalities were detected at the stated band level of resolution.			
Post-Thaw Viable Cell Recovery	WiCell	Thaw using specified Thaw & Culture Recommendations	Recoverable attachment after passage	Pass
Identity by STR	WiCell	PowerPlex 16 HS System by Promega™	Defines STR profile of deposited cell line	See Report
Mycoplasma	WiCell	PCR	Amplification of mycoplasma specific DNA detected with negative result	Pass
Sterility	Steris	Native Product Direct Transfer using FTM and TSB (ST/07)	Negative for growth following 14 days of culture	Pass

Approval Date	WiCell Quality Assurance Approval
12-May-2026	<p style="text-align: right;">5/12/2026</p> <p>X HEB HEB WiCell Quality Assurance Signed by: Bruner, Haley</p>

The material provided under this certificate has been subjected to the tests specified and the results and data described herein are accurate based on WiCell's reasonable knowledge and belief. Appropriate Biosafety Level practices and universal precautions should always be used with this material. For clarity, the foregoing is governed solely by WiCell's Terms and Conditions of Service, which can be found at <http://www.wicell.org/privacyandterms>.

**Date Reported:** August 10, 2025  
**Cell Line:** BCHi015-A-2-DB68704  
**Submitted Passage #:** 19  
**Date of Sample:** 8/4/2025  
**Specimen:** Human iPSC  
**Results:** 46,XX

**Cell Line Sex:** Female  
**Reason for Testing:** LOT\_RELEASE  
  
**Investigator:** WiCell Stem Cell Bank, WiCell



**Cell:** 58  
**Slide:** G01  
**Slide Type:** Karyotype  
  
**Total Counted:** 20  
**Total Analyzed:** 8  
**Total Karyogrammed:** 4  
**Band Resolution:** 450 - 500

**Interpretation:**

**This is a normal karyotype; no clonal abnormalities were detected at the stated band level of resolution.**

**Completed by:** Erica Schutter, CG(ASCP)  
**Reviewed and Interpreted by:** Justin Schleede, PhD, FACMG

For internal use only

**Date:** \_\_\_\_\_ **Sent By:** \_\_\_\_\_ **Sent To:** \_\_\_\_\_ **QC Review By:** \_\_\_\_\_

*Limitations: This assay allows for microscopic visualization of numerical and structural chromosome abnormalities. The size of structural abnormality that can be detected is >3-10Mb, dependent upon the G-band resolution obtained from this specimen. For the purposes of this report, band level is defined as the number of G-bands per haploid genome. It is documented here as "band level", i.e., the range of bands determined from the four karyograms in this assay. Detection of heterogeneity of clonal cell populations in this specimen (i.e., mosaicism) is limited by the number of metaphase cells examined, documented here as "# of cells counted".*

*This assay was conducted solely for listed investigator/institution. The results of this assay are for research use only. Unless otherwise mutually agreed in writing, the services provided to you hereunder by WiCell Research Institute, Inc. ("WiCell") are governed solely by WiCell's Terms and Conditions of Service, found at [www.wicell.org/privacyandterms](http://www.wicell.org/privacyandterms). Any terms you may attach to a purchase order or other document that are inconsistent, add to, or conflict with WiCell's Terms and Conditions of Service are null and void and of no legal force or effect.*



# Short Tandem Repeat

Form SOP-89.01  
Version 15.0

Requestor: WiCell Stem Cell Bank, WiCell  
Sample Receipt Date: 27Jul25, 29Jul25, 31Jul25, 04Aug25  
STR Amplification Date: 06Aug25

Sample Name	WIBR3-S3- WB68940 p33	WIBR3-S1- WB68893 p30	CVCL_C7V3- WB68899 p46	CVCL_C7V2- WB68887 p43	CVCL_C7VG- WB68944 p41	BCHi015-A-2- DB68704 p19
WiCell CTR No. <sup>1</sup>	108572	108571	108532	108531	108613	108617
FGA	Identifying information has been redacted to protect donor confidentiality. If more information is required, please contact <a href="mailto:info@wicell.org">info@wicell.org</a>					
TPOX						
D8S1179						
vWA						
Amelogenin						
Penta_D						
CSF1PO						
D16S539						
D7S820						
D13S317						
D5S818						
Penta_E						
D18S51						
D21S11						
TH01						
D3S1358						
Allelic Polymorphisms	28	28	28	28	28	29
Matches <sup>2</sup>	See Results	See Results	See Results	See Results	See Results	
Comments						

<sup>1</sup> CTR No.: Characterization Test Request Number; also known as a laboratory accessioning number.

<sup>2</sup> The STR profile of the sample(s) listed are a 100% match for the given sample unless otherwise specified.



# Short Tandem Repeat

Form SOP-89.01

Version 15.0

Requestor: WiCell Stem Cell Bank, WiCell

Sample Receipt Date: 27Jul25, 29Jul25, 31Jul25, 04Aug25

STR Amplification Date: 06Aug25

<b>Sample Name</b>	<b>STAN224i-514C3-DB44527 p14</b>
<b>WiCell CTR No.<sup>1</sup></b>	108525
<b>FGA</b>	Identifying information has been redacted to protect donor confidentiality. If more information is required, please contact <a href="mailto:info@wicell.org">info@wicell.org</a>
<b>TPOX</b>	
<b>D8S1179</b>	
<b>vWA</b>	
<b>Amelogenin</b>	
<b>Penta_D</b>	
<b>CSF1PO</b>	
<b>D16S539</b>	
<b>D7S820</b>	
<b>D13S317</b>	
<b>D5S818</b>	
<b>Penta_E</b>	
<b>D18S51</b>	
<b>D21S11</b>	
<b>TH01</b>	
<b>D3S1358</b>	
<b>Allelic Polymorphisms</b>	28
<b>Matches<sup>2</sup></b>	108516
<b>Comments</b>	

<sup>1</sup> CTR No.: Characterization Test Request Number; also known as a laboratory accessioning number.

<sup>2</sup> The STR profile of the sample(s) listed are a 100% match for the given sample unless otherwise specified.



# Short Tandem Repeat

Requestor: WiCell Stem Cell Bank, WiCell  
Sample Receipt Date: 27Jul25, 29Jul25, 31Jul25, 04Aug25  
STR Amplification Date: 06Aug25

**Assay Description:** Short Tandem Repeat (STR) analysis is performed using the PowerPlex® 16 HS System by Promega™. Results are reported as 13 CODIS STR markers, Amelogenin for sex determination and two low-stutter, highly discriminating pentanucleotide STR markers.

**Results:** The genotypic profiles comprise a range of 28-29 allelic polymorphisms across the 15 STR loci analyzed. Samples 108613,108572, 108571, 108531 and 108532 are a 100% match to each other and to 108266, 108053, 107971, 107917, 107916, 107882, 107881, 107640, 107471, 107305 and additional profiles. Additional matches can be provided upon request.

**Interpretation:** The concentration of DNA required to achieve an acceptable STR genotype (signal/ noise) was equivalent to that required for the standard procedure (~1 ng/amplification reaction) from human genomic DNA. These results suggest that the cells submitted correspond to the cell lines as named and were not contaminated with any other human cells or a significant amount of mouse feeder layer cells.

**Sensitivity:** Sensitivity limits for detection of STR polymorphisms unique to either this or other human cell lines is ~2-4%.

8/14/2025	8/15/2025	8/18/2025
<p><b>X</b> Kaylie Haddix</p> <hr/> <p>Tech #1 Characterization Signed by: Haddix, Kaylie</p>	<p><b>X</b> Steph Dos Santos</p> <hr/> <p>Tech #2 Characterization Signed by: Dos Santos, Stephany</p>	<p><b>X</b> Andy Arntz</p> <hr/> <p>QA Review Quality Assurance Signed by: Arntz, Andy</p>

*Unless otherwise mutually agreed in writing, the services provided to you hereunder by WiCell Research Institute, Inc. ("WiCell") are governed solely by WiCell's Terms and Conditions of Service, found at [www.wicell.org/privacyandterms](http://www.wicell.org/privacyandterms). Any terms you may attach to a purchase order or other document that are inconsistent, add to, or conflict with WiCell's Terms and Conditions of Service are null and void and of no legal force or effect. Raw data is available upon request.*



# Mycoplasma Assay Report

PCR-based assay performed by WiCell  
 WiCell Stem Cell Bank, WiCell  
 06Aug25

Form SOP-83.01  
 Version 7.0

Sample Name	Result	Interpretation
Incubator 841 31Jul25 KCM 1/1 (108586)	Negative	Band was not seen at 270bp, indicating the absence of mycoplasma.
Incubator 840 31Jul25 NM 1/1 (108585)	Negative	Band was not seen at 270bp, indicating the absence of mycoplasma.
Incubator 848 31Jul25 KH 1/1 (108584)	Negative	Band was not seen at 270bp, indicating the absence of mycoplasma.
Incubator 839 31Jul25 MEFs 1/1 (108583)	Negative	Band was not seen at 270bp, indicating the absence of mycoplasma.
Incubator 994 31Jul25 NM 1/1 (108582)	Negative	Band was not seen at 270bp, indicating the absence of mycoplasma.
Incubator 994 31Jul25 KH 1/1 (108581)	Negative	Band was not seen at 270bp, indicating the absence of mycoplasma.
Incubator 994 31Jul25 JG 1/1 (108580)	Negative	Band was not seen at 270bp, indicating the absence of mycoplasma.
Incubator 994 31Jul25 KC 1/1 (108579)	Negative	Band was not seen at 270bp, indicating the absence of mycoplasma.
CVCL C7VG-WB68944 p41 (108613)	Negative	Band was not seen at 270bp, indicating the absence of mycoplasma.
BCHi015-A-2-DB68704 p19 (108617)	Negative	Band was not seen at 270bp, indicating the absence of mycoplasma.
Positive (+) Control	Positive	
Negative (-) Control	Negative	

Assay Description
Sample is tested for presence of mycoplasma using EZ-PCR™ Mycoplasma Detection Kit (Sartorius).

8/6/2025	8/6/2025	8/7/2025
<b>X</b> Jacob Chow <hr/> Tech #1 Characterization Signed by: Chow, Jacob	<b>X</b> Amber Kuhn <hr/> Tech #2 Characterization Signed by: Kuhn, Amber	<b>X</b> Hunter Hefti <hr/> QA Review Quality Assurance Signed by: Hefti, Hunter

*Unless otherwise mutually agreed in writing, the services provided to you hereunder by WiCell Research Institute, Inc. ("WiCell") are governed solely by WiCell's Terms and Conditions of Service, found at [www.wicell.org/privacyandterms](http://www.wicell.org/privacyandterms). Any terms you may attach to a purchase order or other document that are inconsistent, add to, or conflict with WiCell's Terms and Conditions of Service are null and void and of no legal force or effect.*

*A gel image is available upon request.*

# Native Product Sterility Report



WiCell Research Institute  
504 S Rosa Road, Rm 101  
Madison, WI 53719

SAMPLE #: 25050630  
DATE RECEIVED: 22-May-25  
TEST INITIATED: 27-May-25  
TEST COMPLETED: 10-Jun-25

SAMPLE NAME / DESCRIPTION: BCHi013-A-1-DB68699  
BCHi013-A-3-DB68700  
BCHi014-A-10-DB68702  
BCHi014-A-12-DB68703  
BCHi014-A-9-DB68701  
BCHi015-A-2-DB68704  
BCHi015-A-3-DB68705  
BCHi015-A-5-DB68706  
BCHi016-A-1-DB68707  
BCHi016-A-3-DB68708  
BCHi017-A-7-DB68709  
BCHi017-A-11-DB68711  
BCHi017-A-9-DB68710  
BCHi018-A-11-DB68714  
BCHi018-A-7-DB68712  
UNIQUE IDENTIFIER: N/A

## TEST RESULTS:

# Tested	# Positives (Growth)	- Control
15	0	2 Negatives

## TEST SUMMARY:

# Samples	Media Type	Volume (mL)	Incubation Temperature (° C)	Incubation Duration (Days)
15	TSB	40	20-25	14
15	FTG	40	30-35	14

## REFERENCE:

Processed according to LAB-003: Sterility Test Procedure

## PD #:

000053

## TEST METHODOLOGY:

USP - Direct Transfer

# Native Product Sterility Report



COMMENTS: Sample # 25050630

AUTHORIZED BY

  
\_\_\_\_\_

DATE

12 JUN 2025

Specific test results may not be indicative of the characteristics of any other samples from the same lot or similar lots. This test report shall not be reproduced, except in full, without prior written approval. Liability is limited to the costs of the tests. Results applied to samples as received.