




Certificate of Analysis

Thaw and Culture Details

Cell Line Name	CVCL_C7VS	
WiCell Lot Number	WB68804	
Provider/Client	University of California - Berkeley – Dr. Dirk Hockemeyer	
Banked By	WiCell	
Thaw and Culture Recommendations	WiCell recommends thawing 1 vial into 1 well of a 6 well plate using iSCORE 01 medium and MEF. WiCell recommends thawing using ROCK Inhibitor for best results.	
Protocol	WiCell Feeder Based (MEF) Protocol 01 for Culture of MJFF iSCORE Lines	
Culture Platform Prior to Freeze	Medium: iSCORE 01 medium	Matrix: MEF
Passage Number	p42 Colony selection occurred at passage 26. Cells were cultured for 15 passages prior to freeze and post colony selection. Plated cells at thaw should be labeled passage 42	
Date Viald	29-April-2025	
Vial Label	CVCL_C7VS p42 WB68804 Store at -135C or colder Made in United States Research Use Only 	
Biosafety and Use Information	Appropriate biosafety precautions should be followed when working with these cells. The end user is responsible for ensuring that the cells are handled and stored in an appropriate manner. WiCell is not responsible for damages or injuries that may result from the use of these cells. Cells distributed by WiCell are intended for research purposes only and are not intended for use in humans.	



Certificate of Analysis

Results

Test Description	Test Provider	Test Method	Test Specification	Result
Karyotype	WiCell	G-T-L Banding performed on 20 metaphase cells	Expected karyotype	See Report
	Results: 46,XX Normal Interpretation: This is a normal karyotype; no clonal abnormalities were detected at the stated band level of resolution. This is a limited analysis, based on eighteen cells examined. Standard analysis requires examination of twenty cells. All analyzable metaphase cells were evaluated.			
Post-Thaw Viable Cell Recovery	WiCell	Thaw using specified Thaw & Culture Recommendations	≥ 15 Undifferentiated Colonies prior to passage, ≤ 30% Differentiation prior to passage, and recoverable attachment after passage	Pass
Identity by STR	WiCell	PowerPlex 16 HS System by Promega™	Defines STR profile of deposited cell line	See Report
Mycoplasma	WiCell	PCR	Amplification of mycoplasma specific DNA detected with negative result	Pass
Sterility	Steris	Native Product Direct Transfer using FTM and TSB (ST/07)	Negative for growth following 14 days of culture	Pass

Approval Date	WiCell Quality Assurance Approval
08-January-2026	<div>1/8/2026</div> <div>X Jenna Gay</div> <div>Jenna Gay WiCell Quality Assurance Signed by Gay, Jenna</div>

The material provided under this certificate has been subjected to the tests specified and the results and data described herein are accurate based on WiCell's reasonable knowledge and belief. Appropriate Biosafety Level practices and universal precautions should always be used with this material. For clarity, the foregoing is governed solely by WiCell's Terms and Conditions of Service, which can be found at <http://www.wicell.org/privacyandterms>.

Date Reported: May 30, 2025

Cell Line: CVCL_C7VS-WB68804

Submitted Passage #: 45

Date of Sample: 5/21/2025

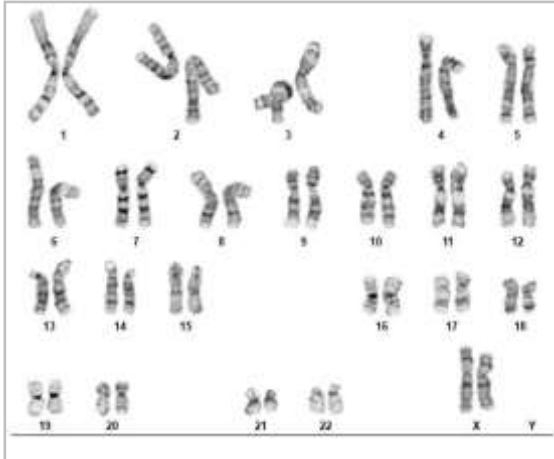
Specimen: Human Modified ESC

Results: 46,XX

Cell Line Sex: Female

Reason for Testing: LOT_RELEASE

Investigator: WiCell Stem Cell Bank, WiCell



Cell: 23

Slide: G02

Slide Type: Karyotype

Total Counted: 18

Total Analyzed: 8

Total Karyogrammed: 4

Band Resolution: 400 - 500

Interpretation:

This is a normal karyotype; no clonal abnormalities were detected at the stated band level of resolution.

This is a limited analysis, based on eighteen cells examined. Standard analysis requires examination of twenty cells. All analyzable metaphase cells were evaluated.

Completed by: Davena Lira, CG(ASCP)

Reviewed and Interpreted by: Justin Schleede, PhD, FACMG

For internal use only

Date: _____ **Sent By:** _____ **Sent To:** _____ **QC Review By:** _____

Limitations: This assay allows for microscopic visualization of numerical and structural chromosome abnormalities. The size of structural abnormality that can be detected is >3-10Mb, dependent upon the G-band resolution obtained from this specimen. For the purposes of this report, band level is defined as the number of G-bands per haploid genome. It is documented here as "band level", i.e., the range of bands determined from the four karyograms in this assay. Detection of heterogeneity of clonal cell populations in this specimen (i.e., mosaicism) is limited by the number of metaphase cells examined, documented here as "# of cells counted".

This assay was conducted solely for listed investigator/institution. The results of this assay are for research use only. Unless otherwise mutually agreed in writing, the services provided to you hereunder by WiCell Research Institute, Inc. ("WiCell") are governed solely by WiCell's Terms and Conditions of Service, found at www.wicell.org/privacyandterms. Any terms you may attach to a purchase order or other document that are inconsistent, add to, or conflict with WiCell's Terms and Conditions of Service are null and void and of no legal force or effect.



Short Tandem Repeat

Requestor: WiCell Stem Cell Bank, WiCell

Sample Receipt Date: 21May25

STR Amplification Date: 28May25

Form SOP-89.01

Version 15.0

Sample Name	CVCL_C7VS-WB68804 p45	SCR9501i-DB43147 p10
WiCell CTR No. ¹	107640	107663
FGA	Identifying information has been redacted to protect donor confidentiality. If more information is required, please contact info@wicell.org	
TPOX		
D8S1179		
vWA		
Amelogenin		
Penta_D		
CSF1PO		
D16S539		
D7S820		
D13S317		
D5S818		
Penta_E		
D18S51		
D21S11		
TH01		
D3S1358		
Allelic Polymorphisms	28	27
Matches ²	107124, 105684, 107305, 105942, 107471	106212
Comments		

¹ CTR No.: Characterization Test Request Number; also known as a laboratory accessioning number.

² The STR profile of the sample(s) listed are a 100% match for the given sample unless otherwise specified.



Short Tandem Repeat

Requestor: WiCell Stem Cell Bank, WiCell

Sample Receipt Date: 21May25

STR Amplification Date: 28May25

Form SOP-89.01

Version 15.0

Assay Description: Short Tandem Repeat (STR) analysis is performed using the PowerPlex® 16 HS System by Promega™. Results are reported as 13 CODIS STR markers, Amelogenin for sex determination and two low-stutter, highly discriminating pentanucleotide STR markers.

Results: The genotypic profiles comprise a range of 27-28 allelic polymorphisms across the 15 STR loci analyzed.

Interpretation: The concentration of DNA required to achieve an acceptable STR genotype (signal/ noise) was equivalent to that required for the standard procedure (~1 ng/amplification reaction) from human genomic DNA. These results suggest that the cells submitted correspond to the cell lines as named and were not contaminated with any other human cells or a significant amount of mouse feeder layer cells.

Sensitivity: Sensitivity limits for detection of STR polymorphisms unique to either this or other human cell lines is ~2-4%.

5/29/2025	5/29/2025	6/2/2025
X Steph Dos Santos	X John Raff	X Dawn Graham
Tech #1	Tech #2	QA Review
Characterization	Characterization	Quality Assurance
Signed by: Dos Santos, Stephany	Signed by: Raff, John	Signed by: Graham, Dawn

Unless otherwise mutually agreed in writing, the services provided to you hereunder by WiCell Research Institute, Inc. ("WiCell") are governed solely by WiCell's Terms and Conditions of Service, found at www.wicell.org/privacyandterms. Any terms you may attach to a purchase order or other document that are inconsistent, add to, or conflict with WiCell's Terms and Conditions of Service are null and void and of no legal force or effect. Raw data is available upon request.



Mycoplasma Assay Report

PCR-based assay performed by WiCell
WiCell Stem Cell Bank, WiCell

12May25

Form SOP-83.01

Version 7.0

Sample Name	Result	Interpretation
CVCL_C7VS-WB68804 p42 (107393)	Negative	Band was not seen at 270bp, indicating the absence of mycoplasma.
Positive (+) Control	Positive	
Negative (-) Control	Negative	

Assay Description

Sample is tested for presence of mycoplasma using EZ-PCR™ Mycoplasma Detection Kit (Sartorius).

5/12/2025	5/14/2025	5/15/2025
X Kami Clerkin	X Steph Dos Santos	X Dawn Graham
Tech #1 Characterization Signed by: Kami Clerkin	Tech #2 Characterization Signed by: Dos Santos, Stephany	QA Review Quality Assurance Signed by: Graham, Dawn

Unless otherwise mutually agreed in writing, the services provided to you hereunder by WiCell Research Institute, Inc. ("WiCell") are governed solely by WiCell's Terms and Conditions of Service, found at www.wicell.org/privacyandterms. Any terms you may attach to a purchase order or other document that are inconsistent, add to, or conflict with WiCell's Terms and Conditions of Service are null and void and of no legal force or effect.

A gel image is available upon request.

Native Product Sterility Report



WiCell Research Institute
504 S Rosa Road, Rm 101
Madison, WI 53719

SAMPLE #: 25060863
DATE RECEIVED: 26-Jun-25
TEST INITIATED: 27-Jun-25
TEST COMPLETED: 11-Jul-25

SAMPLE NAME / DESCRIPTION:

BCHi018-A-9-DB68713
BCHi019-A-10-DB68716
BCHi019-A-11-DB68717
BCHi019-A-9-DB68715
BCHi020-A-5-DB68718
BCHi020-A-8-DB68719
BCHi020-A-9-DB68720
EIFIIIi001-A-DB68807
EIFIIIi002-A-DB68808
PACSIi002-A-DB68805
PACSIi003-A-DB68806
CVCL_C7V1-WB68881
CVCL_C7V2-WB68887
CVCL_C7V3-WB68899
CVCL_C7V4-WB68879
CVCL_C7V5-WB68880
CVCL_C7V6-WB68883
CVCL_C7V7-WB68815
CVCL_C7V8-WB68846
CVCL_C7VS-WB68804

UNIQUE IDENTIFIER: N/A

TEST RESULTS:

# Tested	# Positives (Growth)	- Control
20	0	2 Negatives

TEST SUMMARY:

# Samples	Media Type	Volume (mL)	Incubation Temperature (° C)	Incubation Duration (Days)
20	TSB	40	20-25	14
20	FTG	40	30-35	14

Native Product Sterility Report



REFERENCE: Processed according to LAB-003: Sterility Test Procedure

PD #: 000053

TEST METHODOLOGY: USP - Direct Transfer

COMMENTS: SAMPLE#: 25060863

Upon receipt the samples listed below contained 0.5 mL of fluid, 0.25 mL was tested in each media.

EIFIIIi001-A-DB68807

EIFIIIi002-A-DB68808

PACSIi002-A-DB68805

PACSIi003-A-DB68806

AUTHORIZED BY

A handwritten signature in blue ink, appearing to be "A. R.", written over a horizontal line.

DATE

16 JUL 2025

Specific test results may not be indicative of the characteristics of any other samples from the same lot or similar lots. This test report shall not be reproduced, except in full, without prior written approval. Liability is limited to the costs of the tests. Results applied to samples as received.