




Certificate of Analysis

Thaw and Culture Details

Cell Line Name	WC-24-02-DS-B	
WiCell Lot Number	WB69140	
Parent Material	WC-24-02-DS-B-WB18712	
Provider/Client	University of Wisconsin – Dr. Anita Bhattacharyya	
Banked By	WiCell	
Thaw and Culture Recommendations	WiCell recommends thawing 1 vial into 3 wells of a 6 well plate using mTeSR™ 1 and Matrigel®.	
Protocol	WiCell Feeder Independent Pluripotent Stem Cell Protocol	
Culture Platform Prior to Freeze	Medium: mTeSR™ 1	Matrix: Matrigel®
Passage Number	p20 Cells were cultured for 19 passages prior to freeze. Plated cells at thaw should be labeled passage 20.	
Date Vialied	14-October-2025	
Vial Label	WC-24-02-DS-B p20 WB69140 Store at -135C or colder Made in United States Research Use Only 	
Biosafety and Use Information	Appropriate biosafety precautions should be followed when working with these cells. The end user is responsible for ensuring that the cells are handled and stored in an appropriate manner. WiCell is not responsible for damages or injuries that may result from the use of these cells. Cells distributed by WiCell are intended for research purposes only and are not intended for use in humans.	



Certificate of Analysis

Results

Test Description	Test Provider	Test Method	Test Specification	Result
Karyotype	WiCell	G-T-L Banding performed on 20 metaphase cells	Expected karyotype	See Report
	Results: 46,XX Interpretation: This is a normal karyotype; no clonal abnormalities were detected at the stated band level of resolution.			
Post-Thaw Viable Cell Recovery	WiCell	Thaw using specified Thaw & Culture Recommendations	≥ 15 Undifferentiated Colonies prior to passage, ≤ 30% Differentiation prior to passage, and recoverable attachment after passage	Pass
Identity by STR	WiCell	PowerPlex 16 HS System by Promega™	Consistent with STR profile of donor material	See Report
Mycoplasma	WiCell	PCR	Amplification of mycoplasma specific DNA detected with negative result	Pass
Sterility	Steris	Native Product Direct Transfer using FTM and TSB (ST/07)	Negative for growth following 14 days of culture	Pass

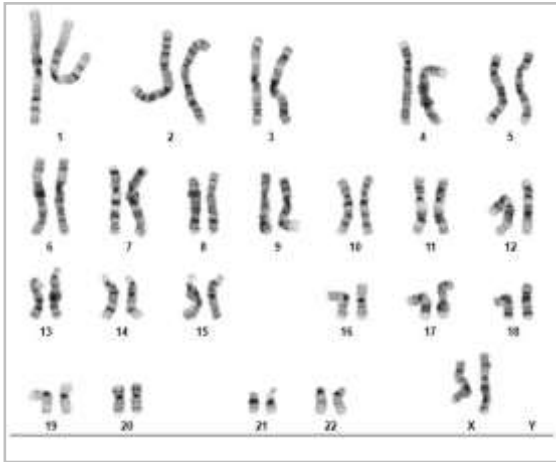
Approval Date	WiCell Quality Assurance Approval
03-April-2026	<div style="text-align: right; font-size: small;">4/3/2026</div> <div style="border: 1px solid black; padding: 2px; width: fit-content; margin: 0 auto;"> <input checked="" type="checkbox"/> HEB </div> <div style="font-size: x-small; margin-top: 2px;"> HEB WiCell Quality Assurance Signed by: Bruner, Haley </div>

The material provided under this certificate has been subjected to the tests specified and the results and data described herein are accurate based on WiCell's reasonable knowledge and belief. Appropriate Biosafety Level practices and universal precautions should always be used with this material. For clarity, the foregoing is governed solely by WiCell's Terms and Conditions of Service, which can be found at <http://www.wicell.org/privacyandterms>.

Date Reported: October 26, 2025
Cell Line: WC-24-02-DS-B-WB69140
Submitted Passage #: 20
Date of Sample: 10/21/2025
Specimen: Human iPSC
Results: 46,XX

Cell Line Sex: Female
Reason for Testing: LOT_RELEASE

Investigator: WiCell Stem Cell Bank, WiCell



Cell: 8
Slide: G03
Slide Type: Karyotype

Total Counted: 20
Total Analyzed: 8
Total Karyogrammed: 4
Band Resolution: 350 - 500

Interpretation:

This is a normal karyotype; no clonal abnormalities were detected at the stated band level of resolution.

Completed by: Pam Mill
Reviewed and Interpreted by: Justin Schleede, PhD, FACMG

For internal use only

Date: _____ **Sent By:** _____ **Sent To:** _____ **QC Review By:** _____

Limitations: This assay allows for microscopic visualization of numerical and structural chromosome abnormalities. The size of structural abnormality that can be detected is >3-10Mb, dependent upon the G-band resolution obtained from this specimen. For the purposes of this report, band level is defined as the number of G-bands per haploid genome. It is documented here as "band level", i.e., the range of bands determined from the four karyograms in this assay. Detection of heterogeneity of clonal cell populations in this specimen (i.e., mosaicism) is limited by the number of metaphase cells examined, documented here as "# of cells counted".

This assay was conducted solely for listed investigator/institution. The results of this assay are for research use only. Unless otherwise mutually agreed in writing, the services provided to you hereunder by WiCell Research Institute, Inc. ("WiCell") are governed solely by WiCell's Terms and Conditions of Service, found at www.wicell.org/privacyandterms. Any terms you may attach to a purchase order or other document that are inconsistent, add to, or conflict with WiCell's Terms and Conditions of Service are null and void and of no legal force or effect.



Short Tandem Repeat

Requestor: WiCell Stem Cell Bank, WiCell

Sample Receipt Date: 21Oct25

STR Amplification Date: 31Oct25

Form SOP-89.01

Version 15.0

Sample Name	SUSL-047_C2- WB69139 p12	WC-24-02-DS-B- WB69140 p20
WiCell CTR No.¹	109595	109594
FGA	Identifying information has been redacted to protect donor confidentiality. If more information is required, please contact info@wicell.org	
TPOX		
D8S1179		
vWA		
Amelogenin		
Penta_D		
CSF1PO		
D16S539		
D7S820		
D13S317		
D5S818		
Penta_E		
D18S51		
D21S11		
TH01		
D3S1358		
Allelic Polymorphisms	26	26
Matches²	109465, 109466 (96.67%)	See Results
Comments		

¹ CTR No.: Characterization Test Request Number; also known as a laboratory accessioning number.

² The STR profile of the sample(s) listed are a 100% match for the given sample unless otherwise specified.



Short Tandem Repeat

Form SOP-89.01
Version 15.0

Requestor: WiCell Stem Cell Bank, WiCell
Sample Receipt Date: 21Oct25
STR Amplification Date: 31Oct25

Assay Description: Short Tandem Repeat (STR) analysis is performed using the PowerPlex® 16 HS System by Promega™. Results are reported as 13 CODIS STR markers, Amelogenin for sex determination and two low-stutter, highly discriminating pentanucleotide STR markers.

Results: The genotypic profiles comprise a range of 26 allelic polymorphisms across the 15 STR loci analyzed. Sample 109594 is a 100% match to 103288, 103130, 95322 and additional profiles. Sample 109594 is a 93.33% match to 109115, 103592, 102657, 102115, 101953, 101596, 92525 and additional profiles. Additional matches can be provided upon request.

Interpretation: The concentration of DNA required to achieve an acceptable STR genotype (signal/ noise) was equivalent to that required for the standard procedure (~1 ng/amplification reaction) from human genomic DNA. These results suggest that the cells submitted correspond to the cell lines as named and were not contaminated with any other human cells or a significant amount of mouse feeder layer cells.

Sensitivity: Sensitivity limits for detection of STR polymorphisms unique to either this or other human cell lines is ~2-4%.

11/3/2025	11/3/2025	11/4/2025
X Amber Kuhn	X Steph Dos Santos	X Manda Weber
Tech #1 Characterization Signed by: Kuhn, Amber	Tech #2 Characterization Signed by: Dos Santos, Stephany	QA Review Quality Assurance Signed by: Weber, Manda

Unless otherwise mutually agreed in writing, the services provided to you hereunder by WiCell Research Institute, Inc. ("WiCell") are governed solely by WiCell's Terms and Conditions of Service, found at www.wicell.org/privacyandterms. Any terms you may attach to a purchase order or other document that are inconsistent, add to, or conflict with WiCell's Terms and Conditions of Service are null and void and of no legal force or effect. Raw data is available upon request.



Mycoplasma Assay Report

PCR-based assay performed by WiCell
WiCell Stem Cell Bank, WiCell
27Oct25

Form SOP-83.01
Version 7.0

Sample Name	Result	Interpretation
SUSL-047_C2-WB69139 p12 (109595)	Negative	Band was not seen at 270bp, indicating the absence of mycoplasma.
WC-24-02-DS-B-WB69140 p20 (109594)	Negative	Band was not seen at 270bp, indicating the absence of mycoplasma.
Positive (+) Control	Positive	
Negative (-) Control	Negative	

Assay Description
Sample is tested for presence of mycoplasma using EZ-PCR™ Mycoplasma Detection Kit (Sartorius).

10/27/2025	10/27/2025	10/28/2025
<p>X Nina Montgomery</p> <hr/> <p>Tech #1 Characterization Signed by: Montgomery, Nina</p>	<p>X Steph Dos Santos</p> <hr/> <p>Tech #2 Characterization Signed by: Dos Santos, Stephany</p>	<p>X Manda Weber</p> <hr/> <p>QA Review Quality Assurance Signed by: Weber, Manda</p>

Unless otherwise mutually agreed in writing, the services provided to you hereunder by WiCell Research Institute, Inc. ("WiCell") are governed solely by WiCell's Terms and Conditions of Service, found at www.wicell.org/privacyandterms. Any terms you may attach to a purchase order or other document that are inconsistent, add to, or conflict with WiCell's Terms and Conditions of Service are null and void and of no legal force or effect.

A gel image is available upon request.

Native Product Sterility Report



WiCell Research Institute
504 S Rosa Road, Rm 101
Madison, WI 53719

SAMPLE #: 25100984
DATE RECEIVED: 30-Oct-25
TEST INITIATED: 31-Oct-25
TEST COMPLETED: 14-Nov-25

SAMPLE NAME / DESCRIPTION: CVCL_C7UZ-WB69110
CVCL_C7VF-WB69111
CVCL_C7VT-WB69109
CVCL_C7VT-WB69112
hIPSC-Di21-c2-4-3-WB69135
hIPSC-Di21-c2-4-3-WB69136
JHU255i-WB69879
STAN151i-303C3-WB69141
STAN359i-442C11-WB69310
SUSL-025_C2-WB69132
SUSL-025_C6-WB69138
SUSL-046_C1-WB69114
SUSL-046_C2-WB69115
SUSL-046_C9-WB69134
SUSL-047_C2-WB69139
SUSL-047_C5-WB69133
SUSL-047_C8-WB69889
WC-24-02-DS-B-WB69140
WC-24-02-DS-B-WB69596
ZFN 3.1-WB69971

UNIQUE IDENTIFIER: N/A

TEST RESULTS:

# Tested	# Positives (Growth)	- Control
20	0	2 Negatives

TEST SUMMARY:

# Samples	Media Type	Volume (mL)	Incubation Temperature (° C)	Incubation Duration (Days)
20	TSB	40	20-25	14
20	FTG	40	30-35	14

REFERENCE: Processed according to LAB-003: Sterility Test Procedure

PD #: 000053

TEST METHODOLOGY: USP - Direct Transfer

Native Product Sterility Report



COMMENTS: Sample #25100984

AUTHORIZED BY _____

A handwritten signature in blue ink, consisting of several overlapping loops and strokes, positioned above the signature line.

DATE 18 Nov 2023

Specific test results may not be indicative of the characteristics of any other samples from the same lot or similar lots. This test report shall not be reproduced, except in full, without prior written approval. Liability is limited to the costs of the tests. Results applied to samples as received.