



Thaw and Culture Details

Cell Line Name	GCT27C4
WiCell Lot Number	DB67566
Provider	Biotrophix Pty. - Dr. Martin Pera
Banked By	Jackson Laboratory - Dr. Martin Pera
Thaw and Culture Recommendations	WiCell recommends thawing 1 vial into 4 wells of a 6 well plate using Embryonal Carcinoma Medium.
Protocol	WiCell Embryonal Carcinoma Cell Line GCT27C4 Protocols
Culture Platform Prior to Freeze	Medium: Embryonal Carcinoma (EC) Culture Medium Matrix: None
Passage Number	p5 These cells were cultured for 5 passages prior to freeze. Therefore, plated cells at thaw should be labeled passage 6.
Date Vial	29-April-2019
Vial Label	GCT27C4 (X240) p5 1million cells 4.29.19 TCM
Biosafety and Use Information	Appropriate biosafety precautions should be followed when working with these cells. The end user is responsible for ensuring that the cells are handled and stored in an appropriate manner. WiCell is not responsible for damages or injuries that may result from the use of these cells. Cells distributed by WiCell are intended for research purposes only and are not intended for use in humans.

Testing Performed by WiCell

Test Description	Test Provider	Test Method	Test Specification	Result
Karyotype by G-banding	WiCell	SOP-49	One karyotype reported for cell line	See Report
	<p>Results: 58~63,XXY,+X[19],+Y[15],-1[20],add(1)(p21)[20],-2[20],add(2)(q11.1)[20],-3[20],add(3)(p25)[20],i(3)(p10)[20],-4[20],add(4)(q21)[20],-5[20],del(5)(p14)[4],t(5;15)(p12;q13)[5],add(6)(p11.2)[20],add(6)(p11.2)[20],i(6)(p10)[20],-7[20],add(9)(p11)[19],del(9)(q11)x1-2[20],del(11)(q23)[2],-12[3],add(12)(p11.1)[8],del(12)(p11.1)[6],+i(12)(p10)x2-3[20],-13[20],-14[20],-15[20],add(17)(p11.1)[20],-18[20],-19[19],-20[8],-21[19],-22[20],+mar1[20],+mar2[20],+mar3[7][cp20]</p> <p>Interpretation: This is an abnormal, hypotriploid, unbalanced karyotype with complex structural and numerical abnormalities. The results are written as a composite ("cp"), based on consistent abnormalities between cells in this culture. The actual number of cells with the abnormality is designated within brackets. There are undefined and apparently unbalanced structural abnormalities ("add" and "mar") that cannot be characterized by G-banded chromosome analysis. Additional testing, e.g., chromosomal microarray or spectral karyotyping (SKY), may be helpful in characterization of this specimen.</p> <p>The karyogram image in the karyotype report is representative; most, but not all, consistent abnormalities are present in these cells.</p> <p>No other clonal abnormalities were detected at the stated band level of resolution. No normal cells were observed.</p>			
Post-Thaw Viable Cell Recovery	WiCell	SOP-99	Recoverable attachment after passage	Pass
Identity by STR	WiCell	PowerPlex 16 HS System by Promega	Defines STR profile of deposited cell line	Pass



Test Description	Test Provider	Test Method	Test Specification	Result
Sterility	Steris	ST/07	Negative	Pass
Mycoplasma	WiCell	SOP-79	Negative	Pass

Approval Date	Quality Assurance Approval
24-February-2021	<div>2/24/2021</div> <div>X JKG</div> <div>JKG</div> <div>Quality Assurance</div> <div>Signed by: Gay, Jenna</div>

Date Reported: Monday, January 14, 2019

Cell Line: GCT27C4

Passage#: #+5

Date of Sample: 12/18/2018

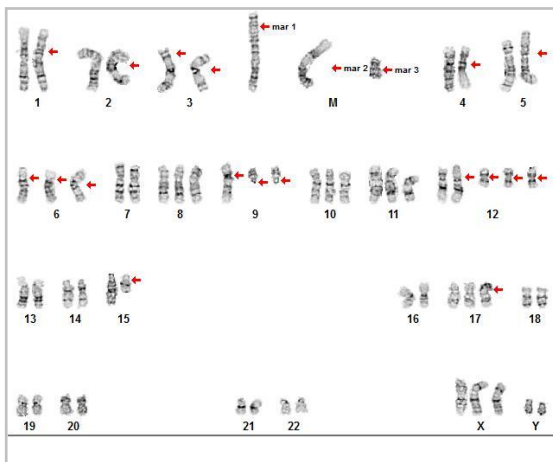
Specimen: Human Other

Cell Line Sex: Male

Reason for Testing: Karyotype for publication

Investigator: [REDACTED], The Jackson Laboratory

Results: 58~63,XXY,+X[19],+Y[15],-1[20],add(1)(p21)[20],-2[20],add(2)(q11.1)[20],-3[20],add(3)(p25)[20],i(3)(p10)[20],-4[20],add(4)(q21)[20],-5[20],del(5)(p14)[4],t(5;15)(p12;q13)[5],add(6)(p11.2)[20],add(6)(p11.2)[20],i(6)(p10)[20],-7[20],add(9)(p11)[19],del(9)(q11)x1-2[20],del(11)(q23)[2],-12[3],add(12)(p11.1)[8],del(12)(p11.1)[6],+i(12)(p10)x2-3[20],-13[20],-14[20],-15[20],add(17)(p11.1)[20],-18[20],-19[19],-20[8],-21[19],-22[20],+mar1[20],+mar2[20],+mar3[7][cp20]



Cell: 30

Slide: G01

Slide Type: Karyotype

Total Counted: 20

Total Analyzed: 20

Total Karyogrammed: 20

Band Resolution: 375 - 475

Interpretation:

This is an abnormal, hypotriploid, unbalanced karyotype with complex structural and numerical abnormalities. The results are written as a composite ("cp"), based on consistent abnormalities between cells in this culture. The actual number of cells with the abnormality is designated within brackets. There are undefined and apparently unbalanced structural abnormalities ("add" and "mar") that cannot be characterized by G-banded chromosome analysis. Additional testing, e.g., chromosomal microarray or spectral karyotyping (SKY), may be helpful in characterization of this specimen.

The karyogram image above is representative; most, but not all, consistent abnormalities are present in these cells.

No other clonal abnormalities were detected at the stated band level of resolution. No normal cells were observed.

Completed by: [REDACTED]

Reviewed and Interpreted by: [REDACTED], PhD, FACMG

Date: _____ **Sent By:** _____ **Sent To:** _____ **QC Review By:** _____

Limitations: This assay allows for microscopic visualization of numerical and structural chromosome abnormalities. The size of structural abnormality that can be detected is >3-10Mb, dependent upon the G-band resolution obtained from this specimen. For the purposes of this report, band level is defined as the number of G-bands per haploid genome. It is documented here as "band level", i.e., the range of bands determined from the four karyograms in this assay. Detection of heterogeneity of clonal cell populations in this specimen (i.e., mosaicism) is limited by the number of metaphase cells examined, documented here as "# of cells counted".

This assay was conducted solely for listed investigator/institution. The results of this assay are for research use only. Unless otherwise mutually agreed in writing, the services provided to you hereunder by WiCell Research Institute, Inc. ("WiCell") are governed solely by WiCell's Terms and Conditions of Service, found at www.wicell.org/privacyandterms. Any terms you may attach to a purchase order or other document that are inconsistent, add to, or conflict with WiCell's Terms and Conditions of Service are null and void and of no legal force or effect.



Short Tandem Repeat

Requestor: WiCell Stem Cell Bank, WiCell
Samples Received: 28Jan21, 04Feb21, 05Feb21
STR Amplification Date: 08Feb21

Form SOP-89.01
Version 3.0

Sample Name	GCT27C4- DB67566 p7	MIN32i- 33109.2B.3A12- WB67622 p42	GCT27DC1- DB67567 p8	MIN34i- 33109.2G.2F2- WB67623 p46	MIN33i- 33109.2G.1A4- WB67621 p45
Label on tube	84615	84689	84690	84691	84712
FGA	22, 24	Identifying information has been redacted to protect donor confidentiality. If more information is required, please contact info@wicell.org			
TPOX	10, 12				
D8S1179	16, 16				
vWA	15, 17 ¹				
Amelogenin	X, Y				
Penta_D	12, 13				
CSF1PO	10, 10				
D16S539	13, 13				
D7S820	10, 10				
D13S317	9, 11				
D5S818	13, 13				
Penta_E	9, 12 ¹				
D18S51	17, 17				
D21S11	30, 30				
TH01	8, 8				
D3S1358	15, 18				
Allelic Polymorphisms	22	26	21	26	26
Matches*					
Comments	¹ Allelic Imbalance		¹ Allelic Imbalance		

*Note: The STR profile of the following sample is an exact match for the given sample/samples.



Short Tandem Repeat

Requestor: WiCell Stem Cell Bank, WiCell
Samples Received: 28Jan21, 04Feb21, 05Feb21
STR Amplification Date: 08Feb21

Form SOP-89.01
Version 3.0

Results: The genotypic profiles comprise a range of 21-26 allelic polymorphisms across the 15 STR loci analyzed.

Interpretation: The concentration of DNA required to achieve an acceptable STR genotype (signal/ noise) was equivalent to that required for the standard procedure (~1 ng/amplification reaction) from human genomic DNA. These results suggests that the cells submitted correspond to the cell lines as named and were not contaminated with any other human cells or a significant amount of mouse feeder layer cells.

Sensitivity: Sensitivity limits for detection of STR polymorphisms unique to either this or other human cell lines is ~2-5%.

Allelic Imbalance: Allelic imbalances were observed in sample 84615 at the vWA and Penta_E loci and in sample 84690 at the vWA loci . This could be the result of chromosomal gains, losses, and/or amplifications in the cell line.

2/9/2021

X

Tech #1
Characterization
Signed by: [redacted]

2/9/2021

X

Tech #2
Characterization
Signed by: [redacted]

2/10/2021

X

QA Review
Quality Assurance
Signed by: [redacted]

Unless otherwise mutually agreed in writing, the services provided to you hereunder by WiCell Research Institute, Inc. ("WiCell") are governed solely by WiCell's Terms and Conditions of Service, found at www.wicell.org/privacyandterms. Any terms you may attach to a purchase order or other document that are inconsistent, add to, or conflict with WiCell's Terms and Conditions of Service are null and void and of no legal force or effect.

Raw data is available upon request.

Native Product Sterility Report



WiCell
504 S Rosa Road, Rm 101
Madison, WI 53719

SAMPLE #: 20121700
DATE RECEIVED: 29-Dec-20
TEST INITIATED: 04-Jan-21
TEST COMPLETED: 18-Jan-21

SAMPLE NAME / DESCRIPTION:

STAN274i-729C2-WB67604
STAN366i-282C2-WB67606
STAN245i-601C4-WB67605
GCT27C4-DB67566
GCT27DC1-DB67567
MIN24i-35613.B-WB67610
MIN25i-35613.SF-1-WB67607
MIN26i-35326.I-WB67609
JHU114i-DB36253
SCR5402i-WB67608
EMe-TPint5GC23-DB67598
EMe-TPint5GC42-DB67599
EMe-TPint5GCA5-DB67600
EMe-TPint5GCC1-DB67601
EMe-TPR208X12-DB67602
EMe-TPR208X25-DB67603
PENNO26i-124-1-DB34876
PENNO27i-40-2-DB36452
JHU090i-DB41248
JHU127i-DB36261

UNIQUE IDENTIFIER: N/A

TEST RESULTS:

# Tested	# Positives (Growth)	- Control
20	0	2 Negatives

TEST SUMMARY:

# Samples	Media Type	Volume (mL)	Incubation Temperature (° C)	Incubation Duration (Days)
20	TSB	40	20-25	14
20	FTG	40	30-35	14

REFERENCE:

Processed according to LAB-003: Sterility Test Procedure

PD #: 000053

TEST METHODOLOGY: USP - Direct Transfer

Native Product Sterility Report



COMMENTS: Sample #20121700

REVIEWED BY

A handwritten signature in blue ink, appearing to read "J. M. L.", written over a horizontal line.

DATE 20 JAN 2021

Specific test results may not be indicative of the characteristics of any other samples from the same lot or similar lots. This test report shall not be reproduced, except in full, without prior written approval. Liability is limited to the costs of the tests. Results applied to samples as received.



Mycoplasma Assay Report

PCR-based assay performed by WiCell

WiCell

27Jan21

FORM SOP-83.01

Version 2.0

Sample Name	Result	Interpretation
WA09-WB67614 p26 (84476)	Negative	Band was not seen at 270bp, indicating the absence of mycoplasma.
WA09-WB67615 p26 (84477)	Negative	Band was not seen at 270bp, indicating the absence of mycoplasma.
MIN30i-33109.2G-WB67613 p35 (84496)	Negative	Band was not seen at 270bp, indicating the absence of mycoplasma.
MIN32i-33109.2B.3A12-DB67579 (84497)	Negative	Band was not seen at 270bp, indicating the absence of mycoplasma.
MIN33i-33109.2G.1A4-DB67580 (84498)	Negative	Band was not seen at 270bp, indicating the absence of mycoplasma.
MIN34i-33109.2G.2F2-DB67581 (84499)	Negative	Band was not seen at 270bp, indicating the absence of mycoplasma.
INC169 21Jan21MMM 1 of 2 (84500)	Negative	Band was not seen at 270bp, indicating the absence of mycoplasma.
INC169 21Jan21MMM 2 of 2 (84501)	Negative	Band was not seen at 270bp, indicating the absence of mycoplasma.
INC123 21Jan21KR 1 of 2 (84502)	Negative	Band was not seen at 270bp, indicating the absence of mycoplasma.
INC123 21Jan21KR 2 of 2 (84503)	Negative	Band was not seen at 270bp, indicating the absence of mycoplasma.
MIN27i-35326.K-WB67617 p10 (84531)	Negative	Band was not seen at 270bp, indicating the absence of mycoplasma.
MIN26i-35326.I-WB67609 p26 (84534)	Negative	Band was not seen at 270bp, indicating the absence of mycoplasma.
MIN31i-33363.D.3C2-DB67578 p22 (84540)	Negative	Band was not seen at 270bp, indicating the absence of mycoplasma.
EMe-TPint5GC42-DB67599 p39 (84541)	Negative	Band was not seen at 270bp, indicating the absence of mycoplasma.
EMe-TPint5GC23-DB67598 p40 (84542)	Negative	Band was not seen at 270bp, indicating the absence of mycoplasma.
GCT27C4-DB67566 p6 (84543)	Negative	Band was not seen at 270bp, indicating the absence of mycoplasma.
GCT27DC1-DB67567 p8 (84544)	Negative	Band was not seen at 270bp, indicating the absence of mycoplasma.
Positive (+) Control	Positive	
Negative (-) Control	Negative	

Reported by: [REDACTED], Assistant Cell Culture Specialist

Reviewed by: [REDACTED], Senior Cell Culture Specialist

Unless otherwise mutually agreed in writing, the services provided to you hereunder by WiCell Research Institute, Inc. ("WiCell") are governed solely by WiCell's Terms and Conditions of Service, found at www.wicell.org/privacyandterms. Any terms you may attach to a purchase order or other document that are inconsistent, add to, or conflict with WiCell's Terms and Conditions of Service are null and void and of no legal force or effect.

A gel image is available upon request.