



## Thaw and Culture Details

Cell Line Name	<b>EMe-TPint5GCC1</b>
WiCell Lot Number	<b>DB67601</b>
Provider	Brown University – Dr. Eric Morrow
Banked By	Brown University – Dr. Eric Morrow
Thaw and Culture Recommendations	WiCell recommends thawing 1 vial into 4 wells of a 6 well plate using mTeSR™Plus/Matrigel®.
Protocol	WiCell Feeder Independent Pluripotent Stem Cell Protocol
Culture Platform Prior to Freeze	Feeder Independent
	Medium: mTeSR™Plus
	Matrix: Matrigel®
Passage Number	p38 These cells were cultured for 38 passages prior to freeze. Cells were modified at passage 26. Therefore, plated cells at thaw should be labeled passage 39.
Date Vialied	03-September-2020
Vial Label	WA09 TPP1 INT5 SA HOM C1 P38 9/3/20
Biosafety and Use Information	Appropriate biosafety precautions should be followed when working with these cells. The end user is responsible for ensuring that the cells are handled and stored in an appropriate manner. WiCell is not responsible for damages or injuries that may result from the use of these cells. Cells distributed by WiCell are intended for research purposes only and are not intended for use in humans.

## Testing Performed by WiCell

Test Description	Test Provider	Test Method	Test Specification	Result
Karyotype by G-banding	WiCell	SOP-49	Expected karyotype	See Report
Post-Thaw Viable Cell Recovery	WiCell	SOP-99	Recoverable attachment after passage	Pass
Identity by STR	WiCell	PowerPlex 16 HS System by Promega	Defines STR profile of deposited cell line	Pass
Sterility	Steris	ST/07	Negative	Pass
Mycoplasma	WiCell	SOP-79	Negative	Pass

Approval Date	Quality Assurance Approval
11-February-2021	<div>2/11/2021</div> <div>X JKG</div> <div>JKG</div> <div>Quality Assurance</div> <div>Signed by Gay, Jenna</div>

**Date Reported:** Tuesday, January 19, 2021

**Cell Line:** EMe-TPint5GCC1-DB67601

**Submitted Passage #:** 40

**Date of Sample:** 1/14/2021

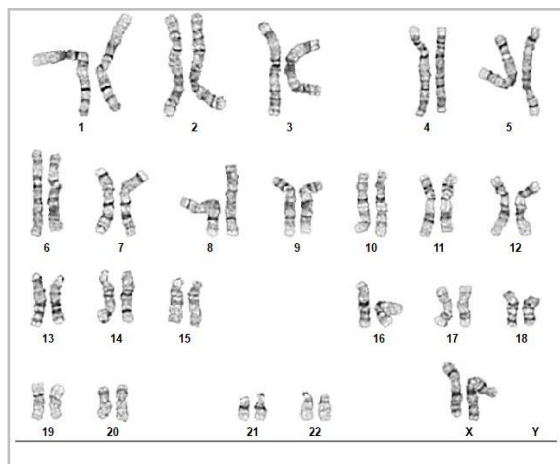
**Specimen:** Human Modified ESC

**Results:** 46,XX

**Cell Line Sex:** Female

**Reason for Testing:** LOT\_RELEASE

**Investigator:** WiCell Stem Cell Bank, WiCell



**Cell:** 31

**Slide:** G03

**Slide Type:** Karyotype

**Total Counted:** 20

**Total Analyzed:** 8

**Total Karyogrammed:** 4

**Band Resolution:** 500 - 550

## Interpretation:

**This is a normal karyotype; no clonal abnormalities were detected at the stated band level of resolution.**

**Completed by:** [REDACTED], CG(ASCP)

**Reviewed and Interpreted by:** [REDACTED], Ph.D.

**Date:** \_\_\_\_\_ **Sent By:** \_\_\_\_\_ **Sent To:** \_\_\_\_\_ **QC Review By:** \_\_\_\_\_

*Limitations: This assay allows for microscopic visualization of numerical and structural chromosome abnormalities. The size of structural abnormality that can be detected is >3-10Mb, dependent upon the G-band resolution obtained from this specimen. For the purposes of this report, band level is defined as the number of G-bands per haploid genome. It is documented here as "band level", i.e., the range of bands determined from the four karyograms in this assay. Detection of heterogeneity of clonal cell populations in this specimen (i.e., mosaicism) is limited by the number of metaphase cells examined, documented here as "# of cells counted".*

*This assay was conducted solely for listed investigator/institution. The results of this assay are for research use only. Unless otherwise mutually agreed in writing, the services provided to you hereunder by WiCell Research Institute, Inc. ("WiCell") are governed solely by WiCell's Terms and Conditions of Service, found at [www.wicell.org/privacyandterms](http://www.wicell.org/privacyandterms). Any terms you may attach to a purchase order or other document that are inconsistent, add to, or conflict with WiCell's Terms and Conditions of Service are null and void and of no legal force or effect.*



# Short Tandem Repeat

Form SOP-89.01

Version 3.0

Requestor: WiCell Stem Cell Bank, WiCell

Samples Received: 11Jan21, 14Jan21, 19Jan21, 21Jan21, 25Jan21, 26Jan21

STR Amplification Date: 25Jan21, 28Jan21

Sample Name	JHU053i-DB36209 p6	JHU157i-DB36352 p16	EMe-TPint5GCA5-DB67600 p40	EMe-TPint5GCC1-DB67601 p40	MIN28i-35833.A-WB67616 p14	MIN29i-35833.B-WB67612 p12	WA09-WB67614 p26
Label on tube	84425	84426	84447	84448	84468	84469	84476
FGA	Identifying information has been redacted to protect donor confidentiality. If more information is required, please contact <a href="mailto:info@wicell.org">info@wicell.org</a>			26, 28	Identifying information has been redacted to protect donor confidentiality. If more information is required, please contact <a href="mailto:info@wicell.org">info@wicell.org</a>		
TPOX				10, 11			
D8S1179				8, 14			
vWA				17, 17			
Amelogenin				X, X			
Penta_D				9, 13			
CSF1PO				11, 11			
D16S539				12, 13			
D7S820				9, 11			
D13S317				9, 9			
D5S818				11, 12			
Penta_E				11, 14			
D18S51				13, 13			
D21S11				30, 30			
TH01				9.3, 9.3			
D3S1358				13, 16			
Allelic Polymorphisms	27	26	24	24	25	25	24
Matches*							See Matches Comment
Comments							

*\*Note: The STR profile of the following sample is an exact match for the given sample/samples.*



# Short Tandem Repeat

Form SOP-89.01

Version 3.0

Requestor: WiCell Stem Cell Bank, WiCell

Samples Received: 11Jan21, 14Jan21, 19Jan21, 21Jan21, 25Jan21, 26Jan21

STR Amplification Date: 25Jan21, 28Jan21

Sample Name	WA09-WB67615 p26	MIN30i- 33109.2G- WB67613 p35	MIN27i-35326.K- WB67617 p10	MIN26i-35326.I- WB67609 p26	BWHi009- WB66301 p180	MIN25i-35613.SF- 1-WB67607 p17	EMe-TPint5GC42- DB67599 p39
Label on tube	84477	84496	84531	84534	84550	84551	84552
FGA	Identifying information has been redacted to protect donor confidentiality. If more information is required, please contact <a href="mailto:info@wicell.org">info@wicell.org</a>						
TPOX							
D8S1179							
vWA							
Amelogenin							
Penta_D							
CSF1PO							
D16S539							
D7S820							
D13S317							
D5S818							
Penta_E							
D18S51							
D21S11							
TH01							
D3S1358							
Allelic Polymorphisms	24	26	29	34	28	26	24
Matches*	See Matches Comment						
Comments				<sup>1</sup> See Triploid Genotype Comment			

*\*Note: The STR profile of the following sample is an exact match for the given sample/samples.*



# Short Tandem Repeat

Form SOP-89.01

Version 3.0

Requestor: WiCell Stem Cell Bank, WiCell

Samples Received: 11Jan21, 14Jan21, 19Jan21, 21Jan21, 25Jan21, 26Jan21

STR Amplification Date: 25Jan21, 28Jan21

Sample Name	EMe-TPint5GC23-DB67598 p40
Label on tube	84553
FGA	Identifying information has been redacted to protect donor confidentiality. If more information is required, please contact <a href="mailto:info@wicell.org">info@wicell.org</a>
TPOX	
D8S1179	
vWA	
Amelogenin	
Penta_D	
CSF1PO	
D16S539	
D7S820	
D13S317	
D5S818	
Penta_E	
D18S51	
D21S11	
TH01	
D3S1358	
Allelic Polymorphisms	24
Matches*	
Comments	

*\*Note: The STR profile of the following sample is an exact match for the given sample/samples.*



# Short Tandem Repeat

Form SOP-89.01

Version 3.0

Requestor: WiCell Stem Cell Bank, WiCell

Samples Received: 11Jan21, 14Jan21, 19Jan21, 21Jan21, 25Jan21, 26Jan21

STR Amplification Date: 25Jan21, 28Jan21

**Results:** The genotypic profiles comprise a range of 24-34 allelic polymorphisms across the 15 STR loci analyzed.

**Interpretation:** The concentration of DNA required to achieve an acceptable STR genotype (signal/ noise) was equivalent to that required for the standard procedure (~1 ng/amplification reaction) from human genomic DNA. These results suggests that the cells submitted correspond to the cell lines as named and were not contaminated with any other human cells or a significant amount of mouse feeder layer cells.

**Sensitivity:** Sensitivity limits for detection of STR polymorphisms unique to either this or other human cell lines is ~2-5%.

**<sup>1</sup>Triploid Genotype:** A triploid genotype was detected at the vWA, Penta\_D, D16S539, Penta\_E, and D18S51 loci. This observation could be the result of chromosomal gain, loss, and/or amplification in this cell line.

**Matches:** Samples 84476 and 84477 are exact matches to each other and to 14630, 74319, 74844, 74924, 74925, 83593, 84032, 84034, and 84095.

2/8/2021

X

Tech #1  
Characterization  
Signed by: [redacted]

2/8/2021

X

Tech #2  
Characterization  
Signed by: [redacted]

2/8/2021

X

QA Review  
Quality Assurance  
Signed by: [redacted]

*Unless otherwise mutually agreed in writing, the services provided to you hereunder by WiCell Research Institute, Inc. ("WiCell") are governed solely by WiCell's Terms and Conditions of Service, found at [www.wicell.org/privacyandterms](http://www.wicell.org/privacyandterms). Any terms you may attach to a purchase order or other document that are inconsistent, add to, or conflict with WiCell's Terms and Conditions of Service are null and void and of no legal force or effect.*

*Raw data is available upon request.*

# Native Product Sterility Report



WiCell  
504 S Rosa Road, Rm 101  
Madison, WI 53719

SAMPLE #: 20121700  
DATE RECEIVED: 29-Dec-20  
TEST INITIATED: 04-Jan-21  
TEST COMPLETED: 18-Jan-21

SAMPLE NAME / DESCRIPTION:

STAN274i-729C2-WB67604  
STAN366i-282C2-WB67606  
STAN245i-601C4-WB67605  
GCT27C4-DB67566  
GCT27DC1-DB67567  
MIN24i-35613.B-WB67610  
MIN25i-35613.SF-1-WB67607  
MIN26i-35326.I-WB67609  
JHU114i-DB36253  
SCR5402i-WB67608  
EMe-TPint5GC23-DB67598  
EMe-TPint5GC42-DB67599  
EMe-TPint5GCA5-DB67600  
EMe-TPint5GCC1-DB67601  
EMe-TPR208X12-DB67602  
EMe-TPR208X25-DB67603  
PENNO26i-124-1-DB34876  
PENNO27i-40-2-DB36452  
JHU090i-DB41248  
JHU127i-DB36261

UNIQUE IDENTIFIER: N/A

## TEST RESULTS:

# Tested	# Positives (Growth)	- Control
20	0	2 Negatives

## TEST SUMMARY:

# Samples	Media Type	Volume (mL)	Incubation Temperature (° C)	Incubation Duration (Days)
20	TSB	40	20-25	14
20	FTG	40	30-35	14

REFERENCE: Processed according to LAB-003: Sterility Test Procedure

PD #: 000053

TEST METHODOLOGY: USP - Direct Transfer

# Native Product Sterility Report



COMMENTS: Sample #20121700

REVIEWED BY

A handwritten signature in blue ink, appearing to read "J. L. H.", written over a horizontal line.

DATE 20 JAN 2021

Specific test results may not be indicative of the characteristics of any other samples from the same lot or similar lots. This test report shall not be reproduced, except in full, without prior written approval. Liability is limited to the costs of the tests. Results applied to samples as received.





# Mycoplasma Assay Report

PCR-based assay performed by WiCell

WiCell

13Jan21

FORM SOP-83.01

Version 2.0

Sample Name	Result	Interpretation
MIN27i-35326.K-DB67585 (84386)	Negative	Band was not seen at 270bp, indicating the absence of mycoplasma.
MIN28i-35833.A-DB67586 (84387)	Negative	Band was not seen at 270bp, indicating the absence of mycoplasma.
MIN29i-35833.B-DB67587 (84388)	Negative	Band was not seen at 270bp, indicating the absence of mycoplasma.
MIN30i-33109.2G-DB67588 (84389)	Negative	Band was not seen at 270bp, indicating the absence of mycoplasma.
JHU042i-DB41048 (84391)	Negative	Band was not seen at 270bp, indicating the absence of mycoplasma.
JHU053i-DB36209 (84392)	Negative	Band was not seen at 270bp, indicating the absence of mycoplasma.
JHU133i-DB41335 (84393)	Negative	Band was not seen at 270bp, indicating the absence of mycoplasma.
JHU157i-DB36352 (84394)	Negative	Band was not seen at 270bp, indicating the absence of mycoplasma.
JHU233i-DB37038 (84395)	Negative	Band was not seen at 270bp, indicating the absence of mycoplasma.
STAN245i-601C4-WB67605 (84403)	Negative	Band was not seen at 270bp, indicating the absence of mycoplasma.
STAN366i-282C2-WB67606 (84404)	Negative	Band was not seen at 270bp, indicating the absence of mycoplasma.
STAN274i-729C2-WB67604 (84411)	Negative	Band was not seen at 270bp, indicating the absence of mycoplasma.
MIN24i-35613.B-WB67610 (84414)	Negative	Band was not seen at 270bp, indicating the absence of mycoplasma.
EMe-TPint5GCC1-DB67601 (84416)	Negative	Band was not seen at 270bp, indicating the absence of mycoplasma.
EMe-TPint5GCA5-DB67600 (84417)	Negative	Band was not seen at 270bp, indicating the absence of mycoplasma.
EMe-TPR208X12-DB67602 (84418)	Negative	Band was not seen at 270bp, indicating the absence of mycoplasma.
EMe-TPR208X25-DB67603 (84419)	Negative	Band was not seen at 270bp, indicating the absence of mycoplasma.
Positive (+) Control	Positive	
Negative (-) Control	Negative	

Reported by: [REDACTED], Cell Culture Specialist

Reviewed by: [REDACTED], Senior Cell Culture Specialist

Unless otherwise mutually agreed in writing, the services provided to you hereunder by WiCell Research Institute, Inc. ("WiCell") are governed solely by WiCell's Terms and Conditions of Service, found at [www.wicell.org/privacyandterms](http://www.wicell.org/privacyandterms). Any terms you may attach to a purchase order or other document that are inconsistent, add to, or conflict with WiCell's Terms and Conditions of Service are null and void and of no legal force or effect.

A gel image is available upon request.