



## Thaw and Culture Details

Cell Line Name	WC020i-SMA-GM14
WiCell Lot Number	WB46760
Provider	University of Wisconsin – Laboratory of Dr. Su-Chun Zhang
Banked By	WiCell
Thaw and Culture Recommendations	WiCell recommends thawing 1 vial into 3 wells of a 6 well plate.
Culture Platform	Feeder Independent
	Medium: mTeSR™1
	Matrix: Matrigel®
Protocol	WiCell Feeder Independent mTeSR™1 Protocol
Passage Number	p47 These cells were cultured for 46 passages after colony picking prior to freeze, 4 of them in mTeSR™1/ Matrigel®. WiCell adds +1 to the passage number to best represent the overall passage number of the cells at thaw.
Date Viald	15-September-2016
Vial Label	WC020i-SMA-GM14 p47 WB46760
Biosafety and Use Information	Appropriate biosafety precautions should be followed when working with these cells. The end user is responsible for ensuring that the cells are handled and stored in an appropriate manner. WiCell is not responsible for damages or injuries that may result from the use of these cells. Cells distributed by WiCell are intended for research purposes only and are not intended for use in humans.

## Testing Performed by WiCell

Test Description	Test Provider	Test Method	Test Specification	Result
Karyotype by G-banding	WiCell	SOP-CH-003	Expected karyotype	Pass
Post-Thaw Viable Cell Recovery	WiCell	SOP-CH-305	≥ 15 Undifferentiated Colonies, ≤ 30% Differentiation and recoverable attachment after passage	Pass
Identity by STR	UW Translational Research Initiatives in Pathology Laboratory	PowerPlex 16 HS System by Promega	Defines profile	Pass
Sterility	Biotech Laboratories	ST/07	Negative	Pass
Mycoplasma	WiCell	SOP-QU-004	Negative	Pass

## Testing Reported by Provider

The provider has published the following testing and results for this cell line. A link to the relevant publication is provided on the cell line specific web page on the WiCell website.

Test Description	Result
Karyotype by G-banding	Normal karyotype



Approval Date	Quality Assurance Approval
17-January-2018	<div>1/17/2018</div> <div>X JKG</div> <div>JKG</div> <div>Quality Assurance</div> <div>Signed by: Gaj, Jenna</div>

**Date Reported:** Monday, September 26, 2016

**Cell Line:** WC020i-SMA-GM14-WB46760  
11847

**Passage#:** 47

**Date of Sample:** 9/20/2016

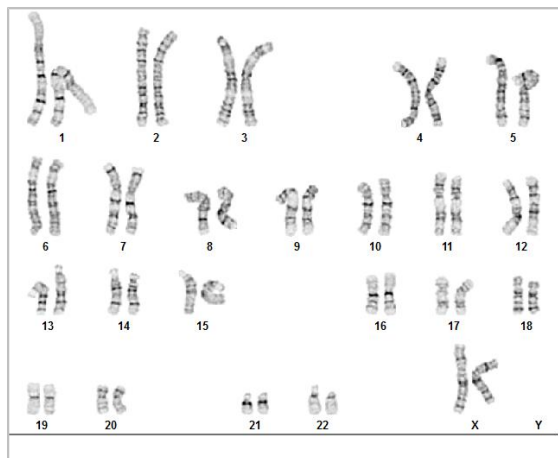
**Specimen:** iPSC

**Results:** 46,XX

**Cell Line Gender:** Female

**Reason for Testing:** lot release testing

**Investigator:** [REDACTED]



**Cell:** 14

**Slide:** 2

**Slide Type:** Karyotype

**Total Counted:** 20

**Total Analyzed:** 8

**Total Karyogrammed:** 4

**Band Resolution:** 450 - 500

## Interpretation:

**This is a normal karyotype. No clonal abnormalities were detected at the stated band level of resolution.**

**Completed by:** [REDACTED]

**Reviewed and Interpreted by:** [REDACTED]

**A signed copy of this report is available upon request.**

**Date:** \_\_\_\_\_ **Sent By:** \_\_\_\_\_ **Sent To:** \_\_\_\_\_ **QC Review By:** \_\_\_\_\_

*Limitations: This assay allows for microscopic visualization of numerical and structural chromosome abnormalities. The size of structural abnormality that can be detected is >3-10Mb, dependent upon the G-band resolution obtained from this specimen. For the purposes of this report, band level is defined as the number of G-bands per haploid genome. It is documented here as "band level", i.e., the range of bands determined from the four karyograms in this assay. Detection of heterogeneity of clonal cell populations in this specimen (i.e., mosaicism) is limited by the number of metaphase cells examined, documented here as "# of cells counted".*

*This assay was conducted solely for listed investigator/institution. The results may not be relied upon by any other party without the prior written consent of the Director of the WiCell Cytogenetics Laboratory. The results of this assay are for research use only. If the results of this assay are to be used for any other purpose, contact the Director of the WiCell Cytogenetics Laboratory.*

*Unless otherwise mutually agreed in writing, the services provided to you hereunder by WiCell Research Institute, Inc. ("WiCell") are governed solely by WiCell's Terms and Conditions of Service, found at [www.wicell.org/privacyandterms](http://www.wicell.org/privacyandterms). Any terms you may attach to a purchase order or other document that are inconsistent, add to, or conflict with WiCell's Terms and Conditions of Service are null and void and of no legal force or effect.*

# Short Tandem Repeat Analysis

Department of Pathology and Laboratory Medicine  
TRIP Laboratory (Molecular)  
<http://www.pathology.wisc.edu/research/trip>

**Sample Report:**

11847-STR  
**Sample Name on Tube:** 11847-STR  
80.2 ng/μL, (A260/280=1.88)  
**Sample Type:** Cells  
**Cell Count:** 2 million

**Requestor:**

WiCell Research Institute  
Quality Department

**Sample Date:** N/A

**Receive Date:** 09/26/16  
**Assay Date:** 09/27/16  
**File Name:** STR 160929 wmr  
**Report Date:** 09/29/16

STR Locus	STR Genotype Repeat #	Identifying information has been redacted to protect donor confidentiality. If more information is required, please, contact <a href="#">WiCell's Technical Support</a> .
FGA	16-18,18.2,19,19.2,20,20.2,21,21.2,22, 22.2, 23, 23.2, 24, 24.2, 25, 25.2, 26-30, 31.2, 43.2, 44.2,45.2, 46.2	
TPOX	6-13	
D8S1179	7-18	
vWA	10-22	
Amelogenin	X,Y	
Penta_D	2.2, 3.2, 5, 7-17	
CSF1PO	6-15	
D16S539	5, 8-15	
D7S820	6-14	
D13S317	7-15	
D5S818	7-16	
Penta_E	5-24	
D18S51	8-10, 10.2, 11-13, 13.2, 14-27	
D21S11	24,24.2,25,25.2,26-28,28.2,29,29.2, 30, 30.2,31, 31.2,32,32.2,33,33.2, 34,34.2,35,35.2,36-38	
TH01	4-9,9.3,10-11,13.3	
D3S1358	12-20	

**Results:** Based on the 11847-STR cells submitted by WiCell QA dated and received on 09/26/16, this sample (Label on Tube: 11847-STR) defines the STR profile of the human stem cell line WC020i-SMA-GM14 comprising 27 allelic polymorphisms across the 15 STR loci analyzed.

**Interpretation:** No STR polymorphisms other than those corresponding to the human WC020i-SMA-GM14 stem cell line were detected and the concentration of DNA required to achieve an acceptable STR genotype (signal/ noise) was equivalent to that required for the standard procedure (~1 ng/amplification reaction) from human genomic DNA. This result suggests that the 11847-STR sample submitted corresponds to the WC020i-SMA-GM14 stem cell line and was not contaminated with any other human stem cells or a significant amount of mouse feeder layer cells.

**Sensitivity:** Sensitivity limits for detection of STR polymorphisms unique to either this or other human stem cell lines is ~2-5%.

X<sub>RMB</sub>

Digitally Signed on 09/30/16

X<sub>WMR</sub>

Digitally Signed on 09/30/16

Testing was accomplished by analysis of human genetic polymorphisms at STR loci. This methodology has not yet been approved by the FDA and is for investigational use only.

Acknowledge TRIP in your publications, posters & presentations. For details, see: <http://www.pathology.wisc.edu/research/trip/acknowledging>

TRIP agrees to maintain the confidentiality of any information provided to it in connection with its performance of this STR analysis on the same conditions as set forth in paragraph 2 of WiCell's Terms and Conditions of Service (<http://www.wicell.org/media.acux/1a429b84-2b54-44a4-8ad8-5c05db93dd8a>).

# Sterility Report

**Biotest Laboratories, Inc.**

*Making life-saving products possible*

WiCell Research Institute, Inc.  
WiCell Quality Assurance  
504 South Rosa Road, Room 101  
Madison, WI 53719

BIOTEST SAMPLE # 16091533

VALIDATION # NG

TEST PURPOSE NG

PRODUCT STAN048i-126-2 DB30969 11796, STAN057i-162-1 DB30966 11797, STAN047i-126-1, DB30963 11798, STAN061i-164-1 WB45344 11848, WC019i-SMA-GM13 WB44684 11849, R366.4 WB46792 11850, WC020i-SMA-GM14 WB46760 11851, UCSD226i-NDC2-1 DB26789 11852, UCSD229i-SAD1-1 DB26798 11853, UCSD232i-SAD2-1 DB26807 11854

PRODUCT LOT NA

STERILE LOT NA

BI LOT NA

STERILIZATION LOT NA

BI EXPIRATION DATE NA

STERILIZATION DATE NA

DATE RECEIVED 2016-09-22

STERILIZATION METHOD NA

TEST INITIATED 2016-10-03

SAMPLING BLDG / ROOM NA

TEST COMPLETED 2016-10-17

REFERENCE Processed according to LAB-003: Sterility Test Procedure

Ten (10) products were divided between 40 mL TSB and 40 mL FTG. The sample was then cultured at 20-25 C and 30-35 C respectively and was monitored for a minimum of 14 days.

- ☒ USP  
☐ BI Manufacturers Specifications  
☐ Other

RESULTS	# POSITIVES	# TESTED	POSITIVE CONTROL	NEGATIVE CONTROL
Sterile	0	10	NA	2 Negatives

COMMENTS NA

REVIEWED BY



DATE

18Oct16

Specific test results may not be indicative of the characteristics of any other samples from the same lot or similar lots. Liability is limited to the costs of the tests.  
The uncertainty of measurement associated with the measurement result reported in this certificate is available from the organization upon request.

Biotest Laboratories ■ 9303 West Broadway Ave. ■ Brooklyn Park, MN 55445 ■ USA ■ (763) 315-1200

A subsidiary of STERIS Corporation



# Mycoplasma Detection Assay Report

Testing Performed by WiCell

Lot Release Test

September 26, 2016

FORM SOP-QU-004.01

Version F Edition 01

Reported by: SM

Reviewed by: JB

Berthold Flash n' Glo 539

#	Sample Name	Reading A		A Ave	Reading B		B Ave	Ratio B/A	Result	Comments/Suggestions
		RLU1	RLU2		RLU1	RLU2				
1	WC020i-SMA-GM14-WB46760 11847	70	72	71	30	34	32	0.45	Negative	
2	Positive (+) Control	147	153	150	5017	5078	5048	33.65	Positive	
3	Negative (-) Control	234	238	236	19	23	21	0.09	Negative	

