



Thaw and Culture Details

Cell Line Name	WC053i-FX08-25
WiCell Lot Number	WB67320
Provider	University of Wisconsin - Dr. Anita Bhattacharyya
Banked By	WiCell
Thaw and Culture Recommendations	WiCell recommends thawing 1 vial into 2 wells of a 6 well plate.
Culture Platform	Feeder Independent
	Medium: TeSR™-E8™
	Matrix: Matrigel®
Protocol	WiCell Feeder Independent E8 Medium Protocol
Passage Number	p9 These cells were cultured for 8 passages prior to freeze and post reprogramming. WiCell adds +1 to the passage number at freeze to best represent the overall passage number of the cells at thaw. Plated cells at thaw should be labeled passage 9.
Date Viald	02-October-2019
Vial Label	WC053i-FX08-25 p9 WB67320
Biosafety and Use Information	Appropriate biosafety precautions should be followed when working with these cells. The end user is responsible for ensuring that the cells are handled and stored in an appropriate manner. WiCell is not responsible for damages or injuries that may result from the use of these cells. Cells distributed by WiCell are intended for research purposes only and are not intended for use in humans.

Testing Performed by WiCell

Test Description	Test Provider	Test Method	Test Specification	Result
Karyotype by G-banding	WiCell	SOP-CH-003	Expected karyotype	See Report
Post-Thaw Viable Cell Recovery	WiCell	SOP-CH-305	≥ 15 Undifferentiated Colonies prior to passage, ≤ 30% Differentiation prior to passage, and recoverable attachment after passage	Pass
Identity by STR	UW Translational Research Initiatives in Pathology Laboratory	PowerPlex 16 HS System by Promega	Defines STR profile	Pass
Sterility	Steris	ST/07	Negative	Pass
Mycoplasma	WiCell	SOP-CH-044	Negative	Pass

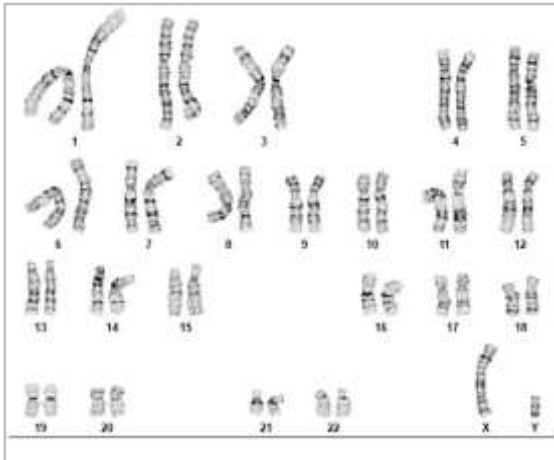
Approval Date	Quality Assurance Approval
07-November-2019	<div>11/7/2019</div> <div>X JKG</div> <div>JKG Quality Assurance Signed by Gay, Jenna</div>



Chromosome Analysis Report: 078728

Date Reported: Monday, October 21, 2019
Cell Line: WC053i-FX08-25-WB67320 15072
Passage#: 10
Date of Sample: 10/15/2019
Specimen: Human IPSC
Results: 46,XY

Cell Line Sex: Male
Reason for Testing: lot release testing
Investigator: Katie Remondini, WiCell



Cell: 7
Slide: G01
Slide Type: Karyotype
Total Counted: 20
Total Analyzed: 8
Total Karyogrammed: 4
Band Resolution: 425 - 550

Interpretation:

This is a normal karyotype; no clonal abnormalities were detected at the stated band level of resolution.

Completed by: Dawn Davis, CG(ASCP)
Reviewed and Interpreted by: Kaitlin C. Lenhart, Ph.D.

Date: _____ **Sent By:** _____ **Sent To:** _____ **QC Review By:** _____

Limitations: This assay allows for microscopic visualization of numerical and structural chromosome abnormalities. The size of structural abnormality that can be detected is >3-10Mb, dependent upon the G-band resolution obtained from this specimen. For the purposes of this report, band level is defined as the number of G-bands per haploid genome. It is documented here as "band level", i.e., the range of bands determined from the four karyograms in this assay. Detection of heterogeneity of clonal cell populations in this specimen (i.e., mosaicism) is limited by the number of metaphase cells examined, documented here as "# of cells counted".

This assay was conducted solely for listed investigator/institution. The results of this assay are for research use only. Unless otherwise mutually agreed in writing, the services provided to you hereunder by WiCell Research Institute, Inc. ("WiCell") are governed solely by WiCell's Terms and Conditions of Service, found at www.wicell.org/privacyandterms. Any terms you may attach to a purchase order or other document that are inconsistent, add to, or conflict with WiCell's Terms and Conditions of Service are null and void and of no legal force or effect.



HISTOLOGY - IHC - MOLECULAR - IMAGING

Department of Pathology and Laboratory Medicine
TRIP Laboratory (Molecular)
<https://research.pathology.wisc.edu/trip-home/>
(608) 265-9168

Short Tandem Repeat Analysis



Your Lab Partner

characterization@wicell.org
(608) 316-4145

Sample Report:

15072-STR
50.7 ng/μL, (A260/280=1.84)
Sample Type: Cells
Cell Count: ~2 million cells

Requestor:

WiCell Research Institute

Receive Date: 10/21/19

Report Sent: 10/25/19

File Name: STR 191023 wmr

Report Date: 10/24/19

STR Locus	STR Genotype Repeat #	STR Genotype
FGA	16-18,18.2,19,19.2,20,20.2,21,21.2,22, 22.2, 23, 23.2, 24, 24.2, 25, 25.2, 26-30, 31.2, 43.2, 44.2,45.2, 46.2	Identifying information has been redacted to protect donor confidentiality. If more information is required, please contact info@wicell.org
TPOX	6-13	
D8S1179	7-18	
vWA	10-22	
Amelogenin	X,Y	
Penta_D	2.2, 3.2, 5, 7-17	
CSF1PO	6-15	
D16S539	5, 8-15	
D7S820	6-14	
D13S317	7-15	
D5S818	7-16	
Penta_E	5-24	
D18S51	8-10, 10.2, 11-13, 13.2, 14-27	
D21S11	24,24.2,25,25.2,26-28,28.2,29,29.2, 30, 30.2,31, 31.2,32,32.2,33,33.2, 34,34.2,35,35.2,36-38	
TH01	4-9,9.3,10-11,13.3	
D3S1358	12-20	

Results: Based on the 15072-STR cells submitted by WiCell QA dated and received on 10/21/19, this sample (Label on Tube: 15072-STR) defines the STR profile of the human cell line WC053i-FX08-25 comprising 25 allelic polymorphisms across the 15 STR loci analyzed.

Interpretation: No STR polymorphisms other than those corresponding to the human WC053i-FX08-25 cell line were detected and the concentration of DNA required to achieve an acceptable STR genotype (signal/noise) was equivalent to that required for the standard procedure (~1 ng/amplification reaction) from human genomic DNA. This result suggests that the 15072-STR sample submitted corresponds to the WC053i-FX08-25 cell line and was not contaminated with any other human cells or a significant amount of mouse feeder layer cells.

Sensitivity: Sensitivity limits for detection of STR polymorphisms unique to either this or other human cell lines is ~2-5%.

X *RMB*

Digitally Signed on 10/25/19

Rebecca M. Baus, BA
TRIP Laboratory, Molecular

X *WMR*

Digitally Signed on 10/25/19

William M. Rehrauer, PhD, Director / Co-Director
UWHC Molecular Diagnostics Laboratory / UWSMPH TRIP Laboratory

Testing was accomplished by analysis of human genetic polymorphisms at STR loci. This methodology has not yet been approved by the FDA and is for investigational use only.

Acknowledge TRIP in your publications, posters & presentations. For details, see: <https://research.pathology.wisc.edu/acknowledging-trip/>
Unless otherwise mutually agreed in writing, the services provided to you hereunder by WiCell Research Institute, Inc. ("WiCell") are governed solely by WiCell's Terms and Conditions of Service, found at <https://www.wicell.org/media/acux/ca76d97c-862a-43f3-b02a-ab2d1e619100>. Any terms you may attach to a purchase order or other document that are inconsistent, add to, or conflict with WiCell's Terms and Conditions of Service are null and void and of no legal force or effect.

Native Product Sterility Report



WiCell
504 S Rosa Road, Rm 101
Madison, WI 53719

SAMPLE #: 19100858
DATE RECEIVED: 10-Oct-19
TEST INITIATED: 16-Oct-19
TEST COMPLETED: 30-Oct-19

SAMPLE NAME / DESCRIPTION: WC059i-108-1-2-19 WB67322 15075
WC057i-108-1-2-02 WB67323 15076
PENN003i-661-4 DB36301 15058
PENN004i-277-1 DB36075 15059
SCR8401i DB43123 15048
SCR9602i DB43150 15049
MCW030i-A2688 WB67307 15050
MCW020i-A2023 WB67311 15054
WC024i-FXS-Nluc1 WB67318 15055
WC053i-FX08-25 WB67320 15057

UNIQUE IDENTIFIER: NA

TEST RESULTS:

# Tested	# Positives (Growth)	- Control
10	0	2 Negatives

TEST SUMMARY:

# Samples	Media Type	Volume (mL)	Incubation Temperature (° C)	Incubation Duration (Days)
10	TSB	40	20-25	14
10	FTG	40	30-35	14

REFERENCE: Processed according to LAB-003: Sterility Test Procedure

PD #: 000053

TEST METHODOLOGY: USP - Direct Transfer

COMMENTS: NA

REVIEWED BY _____

DATE 31 OCT 19

Specific test results may not be indicative of the characteristics of any other samples from the same lot or similar lots. This test report shall not be reproduced, except in full, without prior written approval. Liability is limited to the costs of the tests. Results applied to samples as received.



Mycoplasma Assay Report

PCR-based assay performed by WiCell

WiCell

11Oct19

FORM SOP-CH-048.01

Version A Edition 01

Sample Name	Result	Comments/Suggestions
WC061i-226-1-2-23-DB67316 15066 (78589)	Negative	Band was not seen at 270bp, indicating the absence of mycoplasma.
WC057i-108-1-2-02-WB67323 15067 (78590)	Negative	Band was not seen at 270bp, indicating the absence of mycoplasma.
WC051i-FX08-23-DB67300 15071 (78591)	Negative	Band was not seen at 270bp, indicating the absence of mycoplasma.
WC052i-FX08-24-WB67321 15065 (78592)	Negative	Band was not seen at 270bp, indicating the absence of mycoplasma.
WC059i-108-1-2-19-WB67322 15073 (78593)	Negative	Band was not seen at 270bp, indicating the absence of mycoplasma.
WC053i-FX08-25-WB67320 15072 (78594)	Negative	Band was not seen at 270bp, indicating the absence of mycoplasma.
WC062i-226-1-2-24-DB67317 15060 (78595)	Negative	Band was not seen at 270bp, indicating the absence of mycoplasma.
Positive (+) Control	Positive	
Negative (-) Control	Negative	

Reported by: Katie Remondini, Cell Culture Specialist

Reviewed by: Molly Miles, Cell Culture Specialist

Unless otherwise mutually agreed in writing, the services provided to you hereunder by WiCell Research Institute, Inc. ("WiCell") are governed solely by WiCell's Terms and Conditions of Service, found at www.wicell.org/privacyandterms. Any terms you may attach to a purchase order or other document that are inconsistent, add to, or conflict with WiCell's Terms and Conditions of Service are null and void and of no legal force or effect.

A gel image is available upon request.