



Thaw and Culture Details

Cell Line Name	CRFi001-A
WiCell Lot Number	WB67573
Provider	Choroideremia Research Foundation
Banked By	WiCell
Thaw and Culture Recommendations	WiCell recommends thawing 1 vial into 2 wells of a 6 well plate.
Culture Platform	Feeder Independent
	Medium: mTeSR™1
	Matrix: Matrigel®
Protocol	WiCell Feeder Independent mTeSR™1 Protocol
Passage Number	p23 These cells were cultured for 22 passages prior to freeze and post reprogramming. WiCell adds +1 to the passage number at freeze to best represent the overall passage number of the cells at thaw. Plated cells at thaw should be labeled passage 23.
Date Vialied	07-October-2020
Vial Label	CRFi001-A p23 WB67573
Biosafety and Use Information	Appropriate biosafety precautions should be followed when working with these cells. The end user is responsible for ensuring that the cells are handled and stored in an appropriate manner. WiCell is not responsible for damages or injuries that may result from the use of these cells. Cells distributed by WiCell are intended for research purposes only and are not intended for use in humans.

Testing Performed by WiCell

Test Description	Test Provider	Test Method	Test Specification	Result
Karyotype by G-banding	WiCell	SOP-49	Expected karyotype	See Report
Post-Thaw Viable Cell Recovery	WiCell	SOP-99	≥ 15 Undifferentiated Colonies prior to passage, ≤ 30% Differentiation prior to passage, and recoverable attachment after passage	Pass
Identity by STR	WiCell	PowerPlex 16 HS System by Promega	Defines STR profile	Pass
Sterility	Steris	ST/07	Negative	Pass
Mycoplasma	WiCell	SOP-79	Negative	Pass

Approval Date	Quality Assurance Approval
18-November-2020	<div>11/18/2020</div> <div>X JKG</div> <div>JKG Quality Assurance Signed by Gay, Jenna</div>

Date Reported: Friday, October 30, 2020

Cell Line: CRFi001-A-WB67573

Submitted Passage #: 23

Date of Sample: 10/14/2020

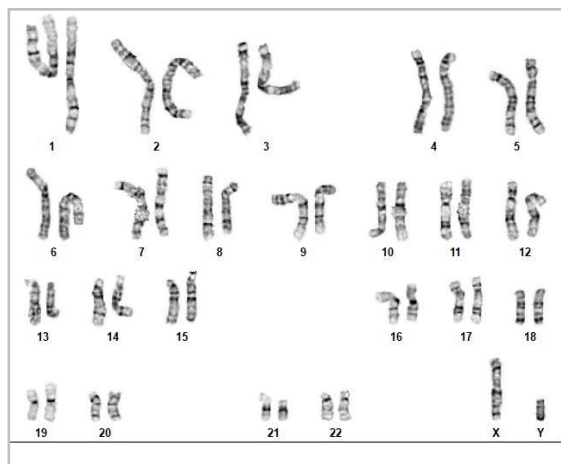
Specimen: Human IPSC

Results: 46,XY

Cell Line Sex: Male

Reason for Testing: LOT_RELEASE

Investigator: WiCell Stem Cell Bank, WiCell



Cell: 12

Slide: G01

Slide Type: Karyotype

Total Counted: 20

Total Analyzed: 8

Total Karyogrammed: 4

Band Resolution: 375 - 475

Interpretation:

This is a normal karyotype; no clonal abnormalities were detected at the stated band level of resolution.

Completed by: [REDACTED]

Reviewed and Interpreted by: [REDACTED], Ph.D.

Date: _____ **Sent By:** _____ **Sent To:** _____ **QC Review By:** _____

Limitations: This assay allows for microscopic visualization of numerical and structural chromosome abnormalities. The size of structural abnormality that can be detected is >3-10Mb, dependent upon the G-band resolution obtained from this specimen. For the purposes of this report, band level is defined as the number of G-bands per haploid genome. It is documented here as "band level", i.e., the range of bands determined from the four karyograms in this assay. Detection of heterogeneity of clonal cell populations in this specimen (i.e., mosaicism) is limited by the number of metaphase cells examined, documented here as "# of cells counted".

This assay was conducted solely for listed investigator/institution. The results of this assay are for research use only. Unless otherwise mutually agreed in writing, the services provided to you hereunder by WiCell Research Institute, Inc. ("WiCell") are governed solely by WiCell's Terms and Conditions of Service, found at www.wicell.org/privacyandterms. Any terms you may attach to a purchase order or other document that are inconsistent, add to, or conflict with WiCell's Terms and Conditions of Service are null and void and of no legal force or effect.



Short Tandem Repeat

Requestor: WiCell Stem Cell Bank, WiCell

Samples Received: 14Oct20

STR Amplification Date: 26Oct20

Form SOP-89.01

Version 2.0

Sample Name	CRFi001-A-WB67573 p.23
Label on tube	83304
FGA	Identifying information has been redacted to protect donor confidentiality. If more information is required, please contact info@wicell.org
TPOX	
D8S1179	
vWA	
Amelogenin	
Penta_D	
CSF1PO	
D16S539	
D7S820	
D13S317	
D5S818	
Penta_E	
D18S51	
D21S11	
TH01	
D3S1358	
Allelic Polymorphisms	25
Matches*	
Comments	

**Note: The STR profile of the following sample is an exact match for the given sample/samples.*



Short Tandem Repeat

Requestor: WiCell Stem Cell Bank, WiCell

Samples Received: 14Oct20

STR Amplification Date: 26Oct20

Form SOP-89.01

Version 2.0

Results: The genotypic profiles comprise a range of 25 allelic polymorphisms across the 15 STR loci analyzed.

Interpretation: The concentration of DNA required to achieve an acceptable STR genotype (signal/ noise) was equivalent to that required for the standard procedure (~1 ng/amplification reaction) from human genomic DNA. These results suggests that the cells submitted correspond to the cell lines as named and were not contaminated with any other human cells or a significant amount of mouse feeder layer cells.

Sensitivity: Sensitivity limits for detection of STR polymorphisms unique to either this or other human cell lines is ~2-5%.

10/28/2020

X [Redacted]

Tech #1

Characterization

Signed by: [Redacted]

10/29/2020

X [Redacted]

Tech #2

Characterization

Signed by: [Redacted]

10/29/2020

X [Redacted]

QA Review

Quality Assurance

Signed by: [Redacted]

Unless otherwise mutually agreed in writing, the services provided to you hereunder by WiCell Research Institute, Inc. ("WiCell") are governed solely by WiCell's Terms and Conditions of Service, found at www.wicell.org/privacyandterms. Any terms you may attach to a purchase order or other document that are inconsistent, add to, or conflict with WiCell's Terms and Conditions of Service are null and void and of no legal force or effect.

Raw data is available upon request.

Native Product Sterility Report



WiCell
504 S Rosa Road, Rm 101
Madison, WI 53719

SAMPLE #: 20100832
DATE RECEIVED: 15-Oct-20
TEST INITIATED: 22-Oct-20
TEST COMPLETED: 04-Nov-20

SAMPLE NAME / DESCRIPTION: CREM004i-SS2-1-WB67570
H9-hTnnT2-pGZ-TD2-WB67569

MIN22i-33113.2I-WB67571
CRFi001-A-WB67573
CRFi002-A-WB67572
SCRp1103i-DB42716
SCRp1203i-DB42719
SCRp1307i-DB42723

UNIQUE IDENTIFIER: N/A

TEST RESULTS:

# Tested	# Positives (Growth)	- Control
10	0	2 Negatives

TEST SUMMARY:

# Samples	Media Type	Volume (mL)	Incubation Temperature (° C)	Incubation Duration (Days)
10	TSB	40	20-25	14
10	FTG	40	30-35	14

REFERENCE: Processed according to LAB-003: Sterility Test Procedure

PD #: 000053

TEST METHODOLOGY: USP - Direct Transfer

COMMENTS: NA

REVIEWED BY 

DATE 10 Nov 2020

Specific test results may not be indicative of the characteristics of any other samples from the same lot or similar lots. This test report shall not be reproduced, except in full, without prior written approval. Liability is limited to the costs of the tests. Results applied to samples as received.



Mycoplasma Assay Report

PCR-based assay performed by WiCell

WiCell

20Oct20

FORM SOP-83.01

Version 01

Sample Name	Result	Comments/Suggestions
CRFi001-A-WB67573 (83304)	Negative	Band was not seen at 270bp, indicating the absence of mycoplasma.
Positive (+) Control	Positive	
Negative (-) Control	Negative	

Reported by: [REDACTED], Assistant Cell Culture Specialist

Reviewed by: [REDACTED], Cell Culture Specialist

Unless otherwise mutually agreed in writing, the services provided to you hereunder by WiCell Research Institute, Inc. ("WiCell") are governed solely by WiCell's Terms and Conditions of Service, found at www.wicell.org/privacyandterms. Any terms you may attach to a purchase order or other document that are inconsistent, add to, or conflict with WiCell's Terms and Conditions of Service are null and void and of no legal force or effect.

A gel image is available upon request.