



Thaw and Culture Details

Cell Line Name	JHU214i
WiCell Lot Number	WB67611
Parent Material	JHU214i -DB36851
Provider	Johns Hopkins University – Laboratory of Dr. Lewis Becker
Banked By	WiCell
Thaw and Culture Recommendations	WiCell recommends thawing 1 vial into 2 wells of a 6 well plate using TeSR™-E8™ and Recombinant Human Vitronectin.
Protocol	WiCell Feeder Independent Pluripotent Stem Cell Protocol
Culture Platform Prior to Freeze	Feeder Independent
	Medium: TeSR™-E8™
	Matrix: Recombinant Human Vitronectin
Passage Number	p20 These cells were cultured for 19 passages prior to freeze and post reprogramming. WiCell adds +1 to the passage number at freeze to best represent the overall passage number of the cells at thaw. Plated cells at thaw should be labeled passage 20.
Date Vialied	22-December-2020
Vial Label	JHU214i p20 WB67611
Biosafety and Use Information	Appropriate biosafety precautions should be followed when working with these cells. The end user is responsible for ensuring that the cells are handled and stored in an appropriate manner. WiCell is not responsible for damages or injuries that may result from the use of these cells. Cells distributed by WiCell are intended for research purposes only and are not intended for use in humans.

Testing Performed by WiCell

Test Description	Test Provider	Test Method	Test Specification	Result
Karyotype by G-banding	WiCell	SOP-49	Expected karyotype	See Report
Post-Thaw Viable Cell Recovery	WiCell	SOP-99	≥ 15 Undifferentiated Colonies prior to passage, ≤ 30% Differentiation prior to passage, and recoverable attachment after passage	Pass
Identity by STR	WiCell	PowerPlex 16 HS System by Promega	Defines STR profile of deposited cell line	Pass
Sterility	Steris	ST/07	Negative	Pass
Mycoplasma	WiCell	SOP-79	Negative	Pass

Testing Reported by Provider

The Provider stated that some or all of the additional analyses listed below may have been performed for this cell line. For more information, publication and dbGaP links, where available, are provided on the cell line specific web page on the WiCell website.

- Embryoid bodies
- Infinium® Expanded Multi-Ethnic Genotyping Array (MEGAEX)



Approval Date	Quality Assurance Approval
25-February-2011	<div>2/25/2021</div> <div>X JKG</div> <div>JKG</div> <div>Quality Assurance</div> <div>Signed by: Gay, Jenna</div>

Date Reported: Friday, February 5, 2021

Cell Line: JHU214i WB67611 T1043979

Submitted Passage #: 21

Date of Sample: 1/29/2021

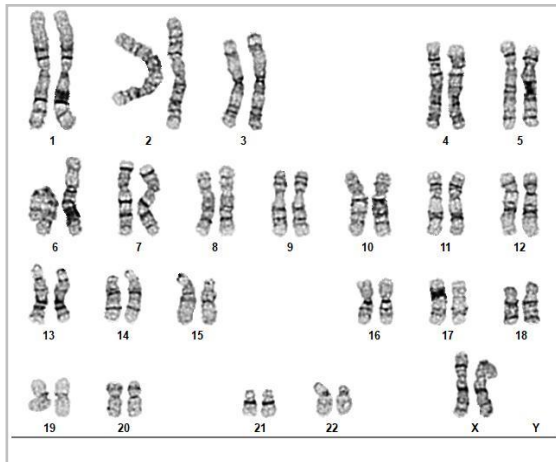
Specimen: iPSC

Results: 46,XX

Cell Line Sex: Female

Reason for Testing: none given

Investigator: WiCell Stem Cell Bank, WiCell



Cell: 11

Slide: G02

Slide Type: Karyotype

Total Counted: 20

Total Analyzed: 8

Total Karyogrammed: 4

Band Resolution: 400 - 450

Interpretation:

This is a normal karyotype; no clonal abnormalities were detected at the stated band level of resolution.

Completed by: [REDACTED], CG(ASCP)

Reviewed and Interpreted by: [REDACTED], Ph.D.

Date: _____ **Sent By:** _____ **Sent To:** _____ **QC Review By:** _____

Limitations: This assay allows for microscopic visualization of numerical and structural chromosome abnormalities. The size of structural abnormality that can be detected is >3-10Mb, dependent upon the G-band resolution obtained from this specimen. For the purposes of this report, band level is defined as the number of G-bands per haploid genome. It is documented here as "band level", i.e., the range of bands determined from the four karyograms in this assay. Detection of heterogeneity of clonal cell populations in this specimen (i.e., mosaicism) is limited by the number of metaphase cells examined, documented here as "# of cells counted".

This assay was conducted solely for listed investigator/institution. The results of this assay are for research use only. Unless otherwise mutually agreed in writing, the services provided to you hereunder by WiCell Research Institute, Inc. ("WiCell") are governed solely by WiCell's Terms and Conditions of Service, found at www.wicell.org/privacyandterms. Any terms you may attach to a purchase order or other document that are inconsistent, add to, or conflict with WiCell's Terms and Conditions of Service are null and void and of no legal force or effect.



Short Tandem Repeat

Requestor: WiCell Stem Cell Bank, WiCell

Samples Received: 28Jan21, 02Feb21

STR Amplification Date: 03Feb21

Form SOP-89.01

Version 3.0

Sample Name	JHU214i-WB67611 p20	WA09-WB67619 p29
Label on tube	84614	84656
FGA	Identifying information has been redacted to protect donor confidentiality. If more information is required, please contact info@wicell.org	
TPOX		
D8S1179		
vWA		
Amelogenin		
Penta_D		
CSF1PO		
D16S539		
D7S820		
D13S317		
D5S818		
Penta_E		
D18S51		
D21S11		
TH01		
D3S1358		
Allelic Polymorphisms	28	24
Matches*		See Matches Comment
Comments		

**Note: The STR profile of the following sample is an exact match for the given sample/samples.*



Short Tandem Repeat

Requestor: WiCell Stem Cell Bank, WiCell

Samples Received: 28Jan21, 02Feb21

STR Amplification Date: 03Feb21

Form SOP-89.01

Version 3.0

Results: The genotypic profiles comprise a range of 24-28 allelic polymorphisms across the 15 STR loci analyzed.

Interpretation: The concentration of DNA required to achieve an acceptable STR genotype (signal/ noise) was equivalent to that required for the standard procedure (~1 ng/amplification reaction) from human genomic DNA. These results suggests that the cells submitted correspond to the cell lines as named and were not contaminated with any other human cells or a significant amount of mouse feeder layer cells.

Sensitivity: Sensitivity limits for detection of STR polymorphisms unique to either this or other human cell lines is ~2-5%.

Matches: Sample 84656 is an exact match to 14630, 74319, 74844, 74924, 74925, 83593, 84032, 84034, 84095, 84476, and 84477.

2/8/2021

X [Redacted]

Tech #1
Characterization
Signed by: [Redacted]

2/8/2021

X [Redacted]

Tech #2
Characterization
Signed by: [Redacted]

2/8/2021

X [Redacted]

QA Review
Quality Assurance
Signed by: [Redacted]

Unless otherwise mutually agreed in writing, the services provided to you hereunder by WiCell Research Institute, Inc. ("WiCell") are governed solely by WiCell's Terms and Conditions of Service, found at www.wicell.org/privacyandterms. Any terms you may attach to a purchase order or other document that are inconsistent, add to, or conflict with WiCell's Terms and Conditions of Service are null and void and of no legal force or effect.

Raw data is available upon request.

Native Product Sterility Report



WiCell
504 S Rosa Road, Rm 101
Madison, WI 53719

SAMPLE #: 21010718
DATE RECEIVED: 14-Jan-21
TEST INITIATED: 20-Jan-21
TEST COMPLETED: 03-Feb-21

SAMPLE NAME / DESCRIPTION: BWHi009-WB66301
PENN038i-366-6-DB36313
JHU042i-DB41048
JHU133i-DB41335
JHU053i-DB36209
JHU157i-DB36352
JHU233i-DB37038
JHU214i-WB67611
WA09-WB67614
WA09-WB67615
UNIQUE IDENTIFIER: N/A

TEST RESULTS:

# Tested	# Positives (Growth)	- Control
10	0	2 Negatives

TEST SUMMARY:

# Samples	Media Type	Volume (mL)	Incubation Temperature (° C)	Incubation Duration (Days)
10	TSB	40	20-25	14
10	FTG	40	30-35	14

REFERENCE: Processed according to LAB-003: Sterility Test Procedure
PD #: 000053
TEST METHODOLOGY: USP - Direct Transfer

COMMENTS: NA

REVIEWED BY 

DATE 04 FEB 2021

Specific test results may not be indicative of the characteristics of any other samples from the same lot or similar lots. This test report shall not be reproduced, except in full, without prior written approval. Liability is limited to the costs of the tests. Results applied to samples as received.



Mycoplasma Assay Report

PCR-based assay performed by WiCell

WiCell

02Feb21

FORM SOP-83.01

Version 2.0

Sample Name	Result	Interpretation
INC149 29Jan21AP (84494)	Negative	Band was not seen at 270bp, indicating the absence of mycoplasma.
BWHi009-WB66301 (84550)	Negative	Band was not seen at 270bp, indicating the absence of mycoplasma.
MIN25i-35613.SF-1-WB67607 (84551)	Negative	Band was not seen at 270bp, indicating the absence of mycoplasma.
JHU214i-WB67611 (84614)	Negative	Band was not seen at 270bp, indicating the absence of mycoplasma.
Positive (+) Control	Positive	
Negative (-) Control	Negative	

Reported by: [REDACTED] Research Specialist

Reviewed by: [REDACTED], Assistant Research Specialist

Unless otherwise mutually agreed in writing, the services provided to you hereunder by WiCell Research Institute, Inc. ("WiCell") are governed solely by WiCell's Terms and Conditions of Service, found at www.wicell.org/privacyandterms. Any terms you may attach to a purchase order or other document that are inconsistent, add to, or conflict with WiCell's Terms and Conditions of Service are null and void and of no legal force or effect.

A gel image is available upon request.