



Certificate of Analysis

Thaw and Culture Details

Cell Line Name	WC035i-SOD1-D90D	
WiCell Lot Number	WB67763	
Parent Material	WC035i-SOD1-D90D-WB66755	
Provider/Client	University of Wisconsin – Dr. Su-Chun Zhang	
Banked By	WiCell	
Thaw and Culture Recommendations	WiCell recommends thawing 1 vial into 3 wells of a 6 well plate using mTeSR™ Plus and Matrigel®.	
Protocol	WiCell Feeder Independent Pluripotent Stem Cell Protocol	
Culture Platform Prior to Freeze	Medium: mTeSR™ Plus	Matrix: Matrigel®
Passage Number	p26 Cells were cultured for 25 passages prior to freeze and post reprogramming. Plated cells at thaw should be labeled passage 26.	
Date Vialled	16-September-2021	
Vial Label	WC035i-SOD1-D90D p26 WB67763	
Biosafety and Use Information	Appropriate biosafety precautions should be followed when working with these cells. The end user is responsible for ensuring that the cells are handled and stored in an appropriate manner. WiCell is not responsible for damages or injuries that may result from the use of these cells. Cells distributed by WiCell are intended for research purposes only and are not intended for use in humans.	



Certificate of Analysis

Results

Test Description	Test Provider	Test Method	Test Specification	Result
Karyotype	WiCell	G-T-L Banding performed on 20 metaphase cells	Expected karyotype	See Report
	Results: 46,XX Interpretation: This is a normal karyotype; no clonal abnormalities were detected at the stated band level of resolution.			
Post-Thaw Viable Cell Recovery	WiCell	Thaw using specified Thaw & Culture Recommendations	≥ 15 Undifferentiated Colonies prior to passage, ≤ 30% Differentiation prior to passage, and recoverable attachment after passage	Pass
Identity by STR	WiCell	PowerPlex 16 HS System by Promega™	Consistent with STR profile of deposited cell line	See Report
Mycoplasma	WiCell	PCR	Amplification of mycoplasma specific DNA detected with negative result	Pass
Sterility	Steris	Native Product Direct Transfer using FTM and TSB (ST/07)	Negative for growth following 14 days of culture	Pass

Testing Reported by Provider

The Provider stated that some or all of the additional analyses listed below may have been performed for this cell line. For more information, relevant publications and additional links, where available, are provided on the cell line specific web page on the WiCell website.

- Successful correction of the targeted locus via TaqMan™ SNP genotyping assays and sequencing
- Uniform expression of pluripotency markers
- Generation of teratomas

Approval Date	WiCell Quality Assurance Approval
28-October-2021	<div>10/28/2021</div> <div>X JKG</div> <div>JKG WiCell Quality Assurance Signed by: Gay, Jenna</div>

Date Reported: Thursday, September 30, 2021

Cell Line Sex: Female

Cell Line: WC035i-SOD1-D90D-WB67763

Reason for Testing: LOT_RELEASE

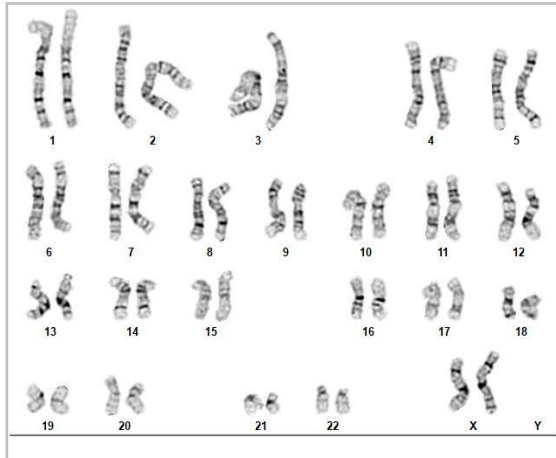
Submitted Passage #: 26

Date of Sample: 9/22/2021

Investigator: WiCell Stem Cell Bank, WiCell

Specimen: Human IPSC

Results: 46,XX



Cell: 3

Slide: G01

Slide Type: Karyotype

Total Counted: 20

Total Analyzed: 8

Total Karyogrammed: 4

Band Resolution: 400 - 500

Interpretation:

This is a normal karyotype; no clonal abnormalities were detected at the stated band level of resolution.

Completed by: Pam Mill

Reviewed and Interpreted by: Kaitlin C. Lenhart, Ph.D.

Date: _____ **Sent By:** _____ **Sent To:** _____ **QC Review By:** _____

Limitations: This assay allows for microscopic visualization of numerical and structural chromosome abnormalities. The size of structural abnormality that can be detected is >3-10Mb, dependent upon the G-band resolution obtained from this specimen. For the purposes of this report, band level is defined as the number of G-bands per haploid genome. It is documented here as "band level", i.e., the range of bands determined from the four karyograms in this assay. Detection of heterogeneity of clonal cell populations in this specimen (i.e., mosaicism) is limited by the number of metaphase cells examined, documented here as "# of cells counted".

This assay was conducted solely for listed investigator/institution. The results of this assay are for research use only. Unless otherwise mutually agreed in writing, the services provided to you hereunder by WiCell Research Institute, Inc. ("WiCell") are governed solely by WiCell's Terms and Conditions of Service, found at www.wicell.org/privacyandterms. Any terms you may attach to a purchase order or other document that are inconsistent, add to, or conflict with WiCell's Terms and Conditions of Service are null and void and of no legal force or effect.



Short Tandem Repeat

Requestor: WiCell Stem Cell Bank, WiCell

Samples Received: 18Sep21, 22Sep21

STR Amplification Date: 27Sep21

Form SOP-89.01

Version 7.0

Sample Name		WC034i-SOD1-D90A-WB67762 p20	WC035i-SOD1-D90D-WB67763 p26
Label on tube		88763	88764
FGA	Identifying information has been redacted to protect donor confidentiality. If more information is required, please contact info@wicell.org		
TPOX			
D8S1179			
vWA			
Amelogenin			
Penta_D			
CSF1PO			
D16S539			
D7S820			
D13S317			
D5S818			
Penta_E			
D18S51			
D21S11			
TH01			
D3S1358			
Allelic Polymorphisms	27	28	28
Matches*	See Matches Comment	70574, 71112, 88764	70574, 71112, 88763
Comments			

**Note: The STR profile of the following sample is an exact match for the given sample/samples.*



Short Tandem Repeat

Requestor: WiCell Stem Cell Bank, WiCell

Samples Received: 18Sep21, 22Sep21

STR Amplification Date: 27Sep21

Form SOP-89.01

Version 7.0

Assay Description: STR analysis is performed using the PowerPlex 16 HS System by Promega™. Results are reported as 13 CODIS STR markers, Amelogenin for gender determination and two low-stutter, highly discriminating pentanucleotide STR markers.

Results: The genotypic profiles comprise a range of 27-28 allelic polymorphisms across the 15 STR loci analyzed.

Interpretation: The concentration of DNA required to achieve an acceptable STR genotype (signal/ noise) was equivalent to that required for the standard procedure (~1 ng/amplification reaction) from human genomic DNA. These results suggests that the cells submitted correspond to the cell lines as named and were not contaminated with any other human cells or a significant amount of mouse feeder layer cells.

Sensitivity: Sensitivity limits for detection of STR polymorphisms unique to either this or other human cell lines is ~2-5%.

Matches: Sample 88711 is an exact match to 88312, 88313, 88433, 88628, 88629, 88630, 88657, 88659, 88664, and 88665 and additional profiles. Additional matches can be provided upon request.

10/1/2021	10/1/2021	10/4/2021
X Hannah Rueth	X Amber Kuhn	X Dawn Graham
Tech #1 Characterization Signed by: Rueth, Hannah	Tech #2 Characterization Signed by: Kuhn, Amber	QA Review Quality Assurance Signed by: Graham, Dawn

Unless otherwise mutually agreed in writing, the services provided to you hereunder by WiCell Research Institute, Inc. ("WiCell") are governed solely by WiCell's Terms and Conditions of Service, found at www.wicell.org/privacyandterms. Any terms you may attach to a purchase order or other document that are inconsistent, add to, or conflict with WiCell's Terms and Conditions of Service are null and void and of no legal force or effect.

Raw data is available upon request.



Mycoplasma Assay Report

PCR-based assay performed by WiCell

WiCell

24Sep21

FORM SOP-83.01

Version 3.0

Sample Name	Result	Interpretation
WC034i-SOD1-D90A-WB67762 p20 (88763)	Negative	Band was not seen at 270bp, indicating the absence of mycoplasma.
WC035i-SOD1-D90D-WB67763 p26 (88764)	Negative	Band was not seen at 270bp, indicating the absence of mycoplasma.
INC123 22Sep21KR (88765)	Negative	Band was not seen at 270bp, indicating the absence of mycoplasma.
Positive (+) Control	Positive	
Negative (-) Control	Negative	

9/24/2021

9/27/2021

9/27/2021

X Amber Kuhn

Tech #1
Characterization
Signed by: Kuhn, Amber

X Katie Remondini

Tech #2
Characterization
Signed by: Remondini, Katie

X Dawn Graham

QA Review
Quality Assurance
Signed by: Graham, Dawn

Unless otherwise mutually agreed in writing, the services provided to you hereunder by WiCell Research Institute, Inc. ("WiCell") are governed solely by WiCell's Terms and Conditions of Service, found at www.wicell.org/privacyandterms. Any terms you may attach to a purchase order or other document that are inconsistent, add to, or conflict with WiCell's Terms and Conditions of Service are null and void and of no legal force or effect.

A gel image is available upon request.

Native Product Sterility Report



WiCell
504 S Rosa Road, Rm 101
Madison, WI 53719

**CORRECTED
REPORT**

SAMPLE #: 21091676
DATE RECEIVED: 30-Sep-21
TEST INITIATED: 01-Oct-21
TEST COMPLETED: 15-Oct-21

SAMPLE NAME / DESCRIPTION: WC034i-SOD1-D90A-WB67762
WC035i-SOD1-D90D-WB67763

[REDACTED]
PENN081i-352-4-DB35147
PENN082i-562-6-DB36109
PENN083i-679-4-DB36305
PENN084i-555-2-DB35115
PENN085i-76-5-DB36325
PENN069i-60-1-DB35123
PENN167i-M5-3-DB34994

UNIQUE IDENTIFIER: N/A

TEST RESULTS:

# Tested	# Positives (Growth)	- Control
10	0	2 Negatives

TEST SUMMARY:

# Samples	Media Type	Volume (mL)	Incubation Temperature (° C)	Incubation Duration (Days)
10	TSB	40	20-25	14
10	FTG	40	30-35	14

REFERENCE: Processed according to LAB-003: Sterility Test Procedure

PD #: 000053

TEST METHODOLOGY: USP - Direct Transfer

COMMENTS: Report revised due to updated Sample/Name Description.

REVIEWED BY Amin Buckhard

DATE 18 Oct 2021

Specific test results may not be indicative of the characteristics of any other samples from the same lot or similar lots. This test report shall not be reproduced, except in full, without prior written approval. Liability is limited to the costs of the tests. Results applied to samples as received.