

Technology specifies what assay was performed

Date Reported: September 18, 2025

Cell Line: Sample Report

Submitted Passage #: 23

Date of Sample: 9/16/2025

Specimen: Human ESC

Technology: Fluorescence In-Situ Hybridization (FISH)

Cell Line Sex: Female

Reason for Testing: LOT_RELEASE

Harvest Date: 9/16/2025

Investigator: WiCell Stem Cell Bank, WiCell

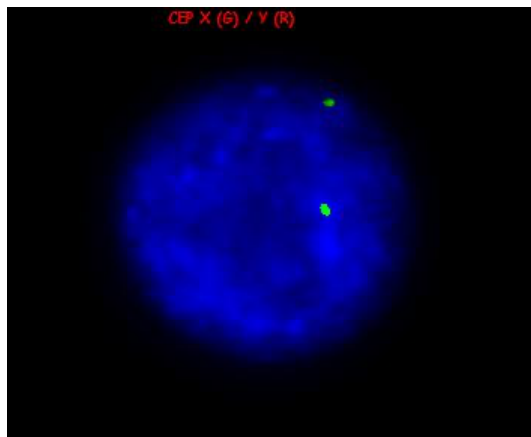
Process Description #: WIC001

Harvest Date has been added

Results:

Probe	# of cells with female (XX) signal pattern	# of cells with a single X signal pattern
CEP X DXZ1 (G) / Y DYZ3 (R)	198 / 200 (99.0%)	2 / 200 (1.0%)
Cutoff	N/A	6.0%

Probe: CEP X (G) / CEP Y (R)



Process Description: WiCell works with client to determine their specific analysis requirements. This number connects those requirements to this final report and can be used for multiple samples or assays.

Interpretation:

Two probe signals were observed in 99.0% of two hundred interphase cells examined for the X centromere regions.

The Abbott Molecular Vysis CEP X (DXZ1) Spectrum Green probe mapping to alpha satellite DNA of chromosome X at p11.1-q11.1 and the CEP Y (DYZ3) Spectrum Orange probe mapping to alpha satellite DNA of chromosome Y at p11.1-q11.1 (32-11202/32-1180024) were simultaneously hybridized in this preparation, resulting in the signal patterns in interphase nuclei reported and shown in the image above. The probes were validated in this laboratory using guidelines established by the American College of Medical Genetics, NCCLS, and described in Wiktor et al., *Genetics in Medicine* 89(1),16-23 (2006) and Wolff et al., *Journal of Molecular Diagnostics* 9(2),134-143 (2007). The WiCell Cytogenetics Laboratory has established and verified the assay's performance.

Case #: 11111

Cell Line:

Deviation: No deviations occurred.

Description of any deviations, if applicable.

Completed by: Technologist Name

The name of the technologist that drafted the report.

Director Review:

DocuSign signature of American Board of Medical Genetics and Genomics (ABMG) board certified board-eligible director

Report Review:

DocuSign signature of certified technologist that reviewed the accuracy of the analysis, results, and report

QA Review:

DocuSign signature of QA member that reviewed the accuracy of the report

For internal use only

Date: _____ **Sent By:** _____ **Sent To:** _____

Compliance statement

This assay was completed in compliance with the U.S. FDA Current Good Manufacturing Practice for Finished Pharmaceuticals (21 CFR part 211) and the EU Good Manufacturing Practice guidelines (EC EudraLex Volume 4) where applicable.

Limitations: This assay allows for microscopic visualization of numerical and structural chromosome abnormalities. The size of structural abnormality that can be detected is >3-10Mb, dependent upon the G-band resolution obtained from this specimen. For the purposes of this report, band level is defined as the number of G-bands per haploid genome. It is documented here as "band level", i.e., the range of bands determined from the four karyograms in this assay. Detection of heterogeneity of clonal cell populations in this specimen (i.e., mosaicism) is limited by the number of metaphase cells examined, documented here as "# of cells counted".

This assay was conducted solely for listed investigator/institution. Unless otherwise mutually agreed in writing, the services provided to you hereunder by WiCell Research Institute, Inc. ("WiCell") are governed solely by WiCell's Terms and Conditions of Service, found at www.wicell.org/privacyandterms. Any terms you may attach to a purchase order or other document that are inconsistent, add to, or conflict with WiCell's Terms and Conditions of Service are null and void and of no legal force or effect.