

**Date Reported:** Thursday, February 10, 2022

**Cell Line Sex:** Female

**Cell Line:** Sample report

**Reason for Testing:** INFORMATIVE

**Submitted Passage #:** none given

**Harvest Date:** 1/27/2022

Harvest Date has been added

**Date of Sample:** 1/27/2022

**Investigator:** WiCell Stem Cell Bank, WiCell

**Specimen:** Human iPSC

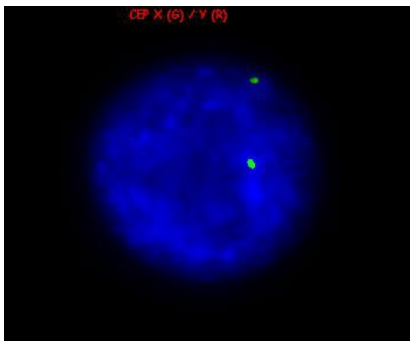
**Process Description #:** C001

Process Description: WiCell works with client to determine their specific analysis requirements. This number connects those requirements to this final report and can be used for multiple samples.

**Results:**

Probe	# of cells with female (XX) signal pattern	# of cells with a single X signal pattern
CEP X DXZ1 (G) / Y DYZ3 (R)	198 / 200 (99.0%)	2 / 200 (1.0%)
Cutoff	N/A	6%

**Probe:** CEP X (G) / Y (R)



**Interpretation:**

Two probe signals were observed in 99.0% of two hundred interphase cells examined for the X centromere regions.

The Abbott Molecular Vysis CEP X (DXZ1) Spectrum Green probe mapping to alpha satellite DNA of chromosome X at p11.1-q11.1 and the CEP Y (DYZ3) Spectrum Orange probe mapping to alpha satellite DNA of chromosome Y at p11.1-q11.1 (32-11202/32-1180024) were simultaneously hybridized in this preparation, resulting in the signal patterns in interphase nuclei reported and shown in the image above. The probes were validated in this laboratory using guidelines established by the American College of Medical Genetics, NCCLS, and described in Wiktor et al., *Genetics in Medicine* 89(1),16-23 (2006) and Wolff et al., *Journal of Molecular Diagnostics* 9(2),134-143 (2007). The WiCell Cytogenetics Laboratory has established and verified the assay's performance.

**Completed by:** SAMPLE  
**Director Review:** SAMPLE  
**Report Review:** SAMPLE  
**QA Review:** SAMPLE

Signatures of certified analyst, American Board of Medical Genetics and Genomics (ABMG) board certified or board-eligible director, and QA.

For internal use only

**Date:** \_\_\_\_\_ **Sent By:** \_\_\_\_\_ **Sent To:** \_\_\_\_\_

This assay was completed in compliance with current FDA 21 CFR part 211 where applicable.

Compliance statement

This assay was conducted solely for listed investigator/institution. The results of this assay are for research use only. Unless otherwise mutually agreed in writing, the services provided to you hereunder by WiCell Research Institute, Inc. ("WiCell") are governed solely by WiCell's Terms and Conditions of Service, found at [www.wicell.org/privacyandterms](http://www.wicell.org/privacyandterms). Any terms you may attach to a purchase order or other document that are inconsistent, add to, or conflict with WiCell's Terms and Conditions of Service are null and void and of no legal force or effect.