

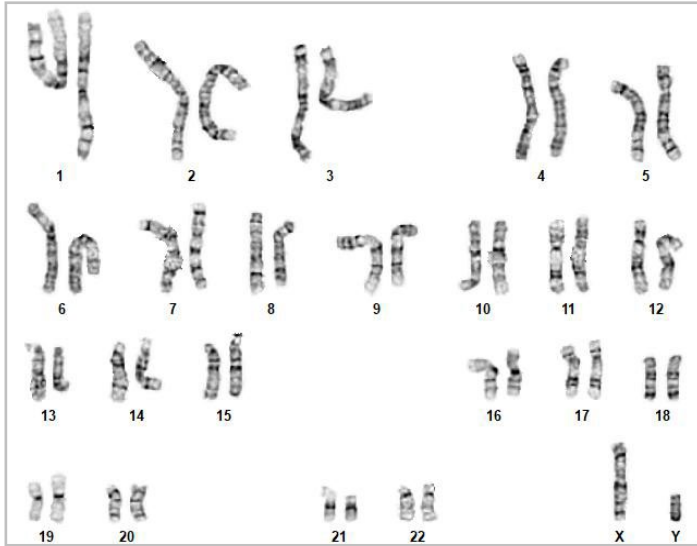
Date Reported: Friday, October 23, 2020
Cell Line: Sample Report
Submitted Passage #: 23
Date of Sample: 10/14/2020

Cell Line Sex: Male
Harvest Date: 10/15/2020
Reason for Testing: LOT_RELEASE
Investigator: WiCell Stem Cell Bank, WiCell
Process Description: C001

Harvest Date has been added

Specimen: Human iPSC
Results: 46,XY

Process Description: WiCell works with the client to determine their specific analysis requirements. This number connects those requirements to this final report and can be used for multiple samples.



Cell: 12
Slide: G01
Slide Type: Karyotype
Total Counted: 20
Total Analyzed: 8
Total Karyogrammed: 4
Band Resolution: 375 - 475

Interpretation:

This is a normal karyotype; no clonal abnormalities were detected at the stated band level of resolution.

Completed by: SAMPLE
Director Review: SAMPLE
Reviewed by: SAMPLE
QA Review: SAMPLE

Signatures of certified analysts, American Board of Medical Genetics and Genomics (ABMGG) board certified or board-eligible director, and QA.

For internal use only:

Date: _____ **Sent By:** _____ **Sent To:** _____

Compliance statement

This assay was completed in compliance with current FDA 21 CFR part 211 where applicable.

Limitations: This assay allows for microscopic visualization of numerical and structural chromosome abnormalities. The size of structural abnormality that can be detected is >3-10Mb, dependent upon the G-band resolution obtained from this specimen. For the purposes of this report, band level is defined as the number of G-bands per haploid genome. It is documented here as "band level", i.e., the range of bands determined from the four karyograms in this assay. Detection of heterogeneity of clonal cell populations in this specimen (i.e., mosaicism) is limited by the number of metaphase cells examined, documented here as "# of cells counted".

This assay was conducted solely for listed investigator/institution. The results of this assay are for research use only. Unless otherwise mutually agreed in writing, the services provided to you hereunder by WiCell Research Institute, Inc. ("WiCell") are governed solely by WiCell's Terms and Conditions of Service, found at www.wicell.org/privacyandterms. Any terms you may attach to a purchase order or other document that are inconsistent, add to, or conflict with WiCell's Terms and Conditions of Service are null and void and of no legal force or effect.