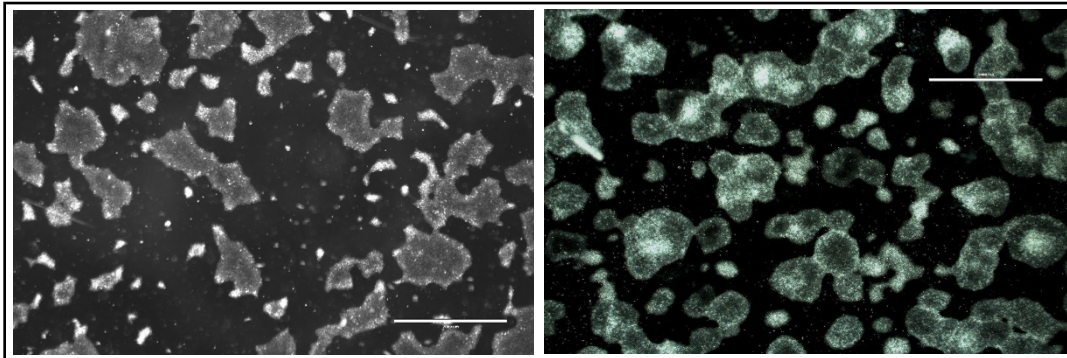




Live Culture Shipment Instructions for Cytogenetic Testing

- Notify the WiCell Cytogenetics Lab that you will be shipping cells for testing (cytogenetics@wicell.org) at least 24 hours in advance and, when possible, provide a tracking number of your shipment.
- Complete one test request form ([Cytogenetic Testing Form](#)) for each sample and send it with the cells
- Seed cells for testing into one or two T25 flasks
- Ship the cells on day 3 or 4 after passage at about 40% – 60% confluency
- Photographs of stem cells at desired shipping confluency



- Prior to shipping, fill the T25 flask to capacity with warmed media, tighten the cap and seal it with parafilm
- Include an aliquot of media with your cultures in case it is necessary to replace the media prior to testing
- Pack the flask securely in a styrofoam box with absorbent material to keep the flask from shifting during transit and to provide insulation
- Warm ice packs to 37°C and include as extra insulation during shipping
- Place the styrofoam box in a cardboard box, label, and ship **PRIORITY OVERNIGHT** or **STANDARD OVERNIGHT** to:

WiCell Cytogenetics Lab
504 South Rosa Road
Suite 101
Madison, WI 53719

****Please do not send packages FIRST OVERNIGHT****

Deliveries can be accepted Monday through Friday from 8:00 a.m. to 5:00 p.m. Please call (608) 316-4145 with any questions
Thank you,

The WiCell Cytogenetics Team

WiCell Research Institute - Cytogenetics Lab www.wicell.org/cytogenetics
PH: (608) 316-4145 FX: (608)204-9699 • Email: cytogenetics@wicell.org • 504 S. Rosa Road, Suite 101, Madison, WI 53719
Billing Inquires Contact: Luke Phelps-McGuire PH: (608)316-4727 Email: accounting@wicell.org

Unless otherwise mutually agreed in writing, the services provided to you hereunder by WiCell Research Institute, Inc. ("WiCell") are governed solely by WiCell's Terms and Conditions of Service, found at www.wicell.org/privacyandterms.
Any terms you may attach to a purchase order or other document that are inconsistent, add to, or conflict with WiCell's Terms and Conditions of Service are null and void and of no legal force or effect. 09152016