



Thaw and Culture Details

Cell Line Name	UCSD024i-13-3
WiCell Lot Number	WB58691
Provider	University of California, San Diego – Dr. Kelly Frazer
Banked By	WiCell
Thaw and Culture Recommendations	WiCell recommends thawing 1 vial into 4 wells of a 6 well plate.
Culture Platform	Feeder Independent
	Medium: mTeSR™1
	Matrix: Matrigel®
Protocol	WiCell Feeder Independent mTeSR™1 Protocol
Passage Number	p20 These cells were cultured for 19 passages prior to freeze and post reprogramming. WiCell adds +1 to the passage number to best represent the overall passage number of the cells at thaw.
Date Vialied	01-February-2017
Vial Label	UCSD024i-13-3 p20 WB58691
Biosafety and Use Information	Appropriate biosafety precautions should be followed when working with these cells. The end user is responsible for ensuring that the cells are handled and stored in an appropriate manner. WiCell is not responsible for damages or injuries that may result from the use of these cells. Cells distributed by WiCell are intended for research purposes only and are not intended for use in humans.

Testing Performed by WiCell

Test Description	Test Provider	Test Method	Test Specification	Result
Karyotype by G-banding	WiCell	SOP-CH-003	Expected karyotype	See Report
Post-Thaw Viable Cell Recovery	WiCell	SOP-CH-305	≥ 15 Undifferentiated Colonies, ≤ 30% Differentiation and recoverable attachment after passage	Pass
Identity by STR	UW Translational Research Initiatives in Pathology Laboratory	PowerPlex 16 HS System by Promega	Defines profile	Pass
Sterility	Steris	ST/07	Negative	Pass
Mycoplasma	WiCell	SOP-QU-004	Negative	Pass

Testing Reported by Provider

The Provider stated that some or all of the additional analyses listed below may have been performed for this cell line. For more information, publication and dbGaP links, where available, are provided on the cell line specific web page on the WiCell website.

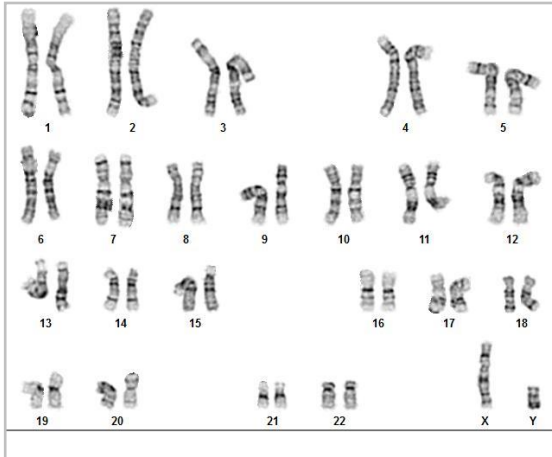
- Illumina® HumanCoreExome BeadChip Array
- RNA-Seq
- Flow Cytometry (SSEA-4, Tra 1-81)
- Infinium® Expanded Multi-Ethnic Genotyping Array (MEGA^{EX})



Approval Date	Quality Assurance Approval
18-February-2017	<p style="text-align: right;">9/12/2018</p> <p>X JKG _____</p> <p><small>WiCell Quality Assurance Signed by: Gay, Jenna</small></p>

Date Reported: Wednesday, June 20, 2018
Cell Line: UCSD024i-13-3-WB58691 13675
Passage#: 20
Date of Sample: 6/12/2018
Specimen: Human IPS
Results: 46,XY

Cell Line Sex: Male
Reason for Testing: lot release testing
Investigator: [REDACTED], WiCell



Cell: 55
Slide: G01
Slide Type: Karyotype
Total Counted: 20
Total Analyzed: 8
Total Karyogrammed: 4
Band Resolution: 500 - 550

Interpretation:

This is a normal karyotype; no clonal abnormalities were detected at the stated band level of resolution.

The percentage of polyploid cells in this analysis is slightly elevated, about 13%. Background levels of polyploidy in human pluripotent stem cell cultures is <10% in our experience.

Completed by: [REDACTED], CG(ASCP)

Reviewed and Interpreted by: [REDACTED], PhD, FACMG

A signed copy of this report is available upon request.

Date: _____ **Sent By:** _____ **Sent To:** _____ **QC Review By:** _____

Limitations: This assay allows for microscopic visualization of numerical and structural chromosome abnormalities. The size of structural abnormality that can be detected is >3-10Mb, dependent upon the G-band resolution obtained from this specimen. For the purposes of this report, band level is defined as the number of G-bands per haploid genome. It is documented here as "band level", i.e., the range of bands determined from the four karyograms in this assay. Detection of heterogeneity of clonal cell populations in this specimen (i.e., mosaicism) is limited by the number of metaphase cells examined, documented here as "# of cells counted".

This assay was conducted solely for listed investigator/institution. The results of this assay are for research use only. Unless otherwise mutually agreed in writing, the services provided to you hereunder by WiCell Research Institute, Inc. ("WiCell") are governed solely by WiCell's Terms and Conditions of Service, found at www.wicell.org/privacyandterms. Any terms you may attach to a purchase order or other document that are inconsistent, add to, or conflict with WiCell's Terms and Conditions of Service are null and void and of no legal force or effect.

Sample Report:

13675-STR

Sample Name on Tube: 13675-STR

103.3 ng/μL, (A260/280=1.86)

Sample Type: Cells**Cell Count:** ~2 million cells**Requestor:**

WiCell Research Institute

Quality Department

Sample Date: N/A**Receive Date:** 06/18/18**Assay Date:** 06/20/18**File Name:** STR 180622 wmr**Report Date:** 06/27/18

STR Locus	STR Genotype Repeat #	STR Genotype
FGA	16-18,18.2,19,19.2,20,20.2,21,21.2,22, 22.2, 23, 23.2, 24, 24.2, 25, 25.2, 26-30, 31.2, 43.2, 44.2,45.2, 46.2	Identifying information has been redacted to protect donor confidentiality. If more information is required, please, contact WiCell's Technical Support .
TPOX	6-13	
D8S1179	7-18	
vWA	10-22	
Amelogenin	X,Y	
Penta_D	2.2, 3.2, 5, 7-17	
CSF1PO	6-15	
D16S539	5, 8-15	
D7S820	6-14	
D13S317	7-15	
D5S818	7-16	
Penta_E	5-24	
D18S51	8-10, 10.2, 11-13, 13.2, 14-27	
D21S11	24,24.2,25,25.2,26-28,28.2,29,29.2, 30, 30.2,31, 31.2,32,32.2,33,33.2, 34,34.2,35,35.2,36-38	
TH01	4-9,9.3,10-11,13.3	
D3S1358	12-20	

Results: Based on the 13675-STR cells submitted by WiCell QA dated and received on 06/18/18, this sample (Label on Tube: 13675-STR) defines the STR profile of the human stem cell line UCSD024i-13-3 comprising 25 allelic polymorphisms across the 15 STR loci analyzed.

Interpretation: No STR polymorphisms other than those corresponding to the human UCSD024i-13-3 stem cell line were detected and the concentration of DNA required to achieve an acceptable STR genotype (signal/noise) was equivalent to that required for the standard procedure (~1 ng/amplification reaction) from human genomic DNA. This result suggests that the 13675-STR sample submitted corresponds to the UCSD024i-13-3 stem cell line and was not contaminated with any other human stem cells or a significant amount of mouse feeder layer cells.

Sensitivity: Sensitivity limits for detection of STR polymorphisms unique to either this or other human stem cell lines is ~2-5%.



Digitally Signed on 06/28/18

BA
TRIP Laboratory, Molecular

Digitally Signed on 06/28/18

PhD, Director / Co-Director
UWHC Molecular Diagnostics Laboratory / UWSMPH TRIP Laboratory

Native Product Sterility Report



CORRECTED REPORT

WiCell
504 S Rosa Rd., RM 101
Madison, WI 53719

SAMPLE #: 17120390
DATE RECEIVED: 07-Dec-17
TEST INITIATED: 11-Dec-17
TEST COMPLETED: 26-Dec-17

SAMPLE NAME / DESCRIPTION: UCSD125i-7-2 WB66673 13110
UCSD174i-18-2 WB66672 13111
UCSD177i-17-2 WB66671 13112
WISC011i-inGFPpuro WB66670 13113
UCSD008i-44-1 WB66287 13114
UCSD006i-21-1 WB57101 13116
UCSD007i-21-2 WB54928 13117
UCSD013i-16-3 WB61874 13118
UCSD014i-21-3 WB55344 13119
UCSD022i-8-3 WB59011 13120
UCSD023i-8-4 WB58972 13121
UCSD024i-13-3 WB58691 13122
UCSD025i-13-4 WB63445 13123
UCSD026i-9-1 WB54736 13124
UCSD028i-9-3 WB54172 13125
UCSD029i-9-4 WB63527 13126
UCSD030i-23-2 WB58975 13127
UCSD031i-45-1 WB58276 13128
UCSD032i-41-1 WB64803 13129
UCSD085i-6-2 WB61664 13139

UNIQUE IDENTIFIER: NA
PRODUCT REGISTRATION: Human iPS Cells

TEST RESULTS:

# Tested	# Positives (Growth)	- Control
20	0	2 Negatives

TEST SUMMARY:

# Samples	Media Type	Volume (mL)	Incubation Temperature (° C)	Incubation Duration (Days)
20	TSB	40	20-25	14
20	FTG	40	30-35	14


REFERENCE: Processed according to LAB-003: Sterility Test Procedure
METHOD VALIDATION / PD #: 000053

Native Product Sterility Report



TEST METHODOLOGY: USP - Direct Transfer

COMMENTS: Report revised due to incorrect sample name/description.

REVIEWED BY 

DATE 02JAN18

Specific test results may not be indicative of the characteristics of any other samples from the same lot or similar lots. This test report shall not be reproduced, except in full, without prior written approval. Liability is limited to the costs of the tests.



Mycoplasma Detection Assay Report

Testing Performed by WiCell

Lot Release Testing

June 14, 2018

FORM SOP-QU-004.01

Version G Edition 02

Reported by: AP

Reviewed by: KR

BD Monolight 180

#	Sample Name	Reading A		A Ave	Reading B		B Ave	Ratio B/A	Result	Comments/Suggestions
		RLU1	RLU2		RLU1	RLU2				
1	UCSD024i-13-3-WB58691 13675	284	292	288	91	88	89.5	0.31	Negative	
2	Positive (+) Control	560	600	580	21715	21834	21775	37.54	Positive	
3	Negative (-) Control	910	902	560	91	87	89	0.16	Negative	

