



Thaw and Culture Details

Cell Line Name	UCSD220i-118-1
WiCell Lot Number	WB60019
Provider	University of California, San Diego – Dr. Kelly Frazer
Banked By	WiCell
Thaw and Culture Recommendations	WiCell recommends thawing 1 vial into 3 wells of a 6 well plate.
Culture Platform	Feeder Independent
	Medium: mTeSR™1
	Matrix: Matrigel®
Protocol	WiCell Feeder Independent mTeSR™1 Protocol
Passage Number	p20 These cells were cultured for 19 passages prior to freeze and post reprogramming. WiCell adds +1 to the passage number to best represent the overall passage number of the cells at thaw.
Date Vialied	20-February-2017
Vial Label	UCSD220i-118-1 p20 WB60019
Biosafety and Use Information	Appropriate biosafety precautions should be followed when working with these cells. The end user is responsible for ensuring that the cells are handled and stored in an appropriate manner. WiCell is not responsible for damages or injuries that may result from the use of these cells. Cells distributed by WiCell are intended for research purposes only and are not intended for use in humans.

Testing Performed by WiCell

Test Description	Test Provider	Test Method	Test Specification	Result
Karyotype by G-banding	WiCell	SOP-CH-003	Expected karyotype	See Report
Post-Thaw Viable Cell Recovery	WiCell	SOP-CH-305	≥ 15 Undifferentiated Colonies, ≤ 30% Differentiation and recoverable attachment after passage	Pass
Identity by STR	UW Translational Research Initiatives in Pathology Laboratory	PowerPlex 16 HS System by Promega	Defines profile	Pass
Sterility	Steris	ST/07	Negative	Pass
Mycoplasma	WiCell	SOP-CH-044	Negative	Pass

Testing Reported by Provider

The Provider stated that some or all of the additional analyses listed below may have been performed for this cell line. For more information, publication and dbGaP links, where available, are provided on the cell line specific web page on the WiCell website.

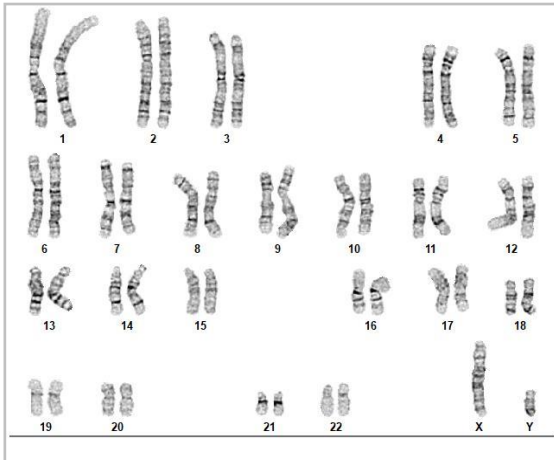
- Illumina® HumanCoreExome BeadChip Array
- RNA-Seq
- Flow Cytometry (SSEA-4, Tra 1-81)
- Infinium® Expanded Multi-Ethnic Genotyping Array (MEGA^{EX})



Approval Date	Quality Assurance Approval
23-March-2017	<p style="text-align: right;">6/6/2019</p> <p>X RK</p> <hr/> <p><small>WiCell Quality Assurance Signed by: Kremers, Erik</small></p>

Date Reported: Monday, May 27, 2019
Cell Line: UCSD220i-118-1-WB60019 14638
Passage#: 20
Date of Sample: 5/13/2019
Specimen: Human IPS
Results: 46,XY

Cell Line Sex: Male
Reason for Testing: lot release testing
Investigator: [REDACTED], WiCell



Cell: 1
Slide: G02
Slide Type: Karyotype
Total Counted: 20
Total Analyzed: 8
Total Karyogrammed: 4
Band Resolution: 475 - 525

Interpretation:

This is a normal karyotype; no clonal abnormalities were detected at the stated band level of resolution.

Completed by: [REDACTED], CG(ASCP)
Reviewed and Interpreted by: [REDACTED], PhD, FACMG

Date: _____ **Sent By:** _____ **Sent To:** _____ **QC Review By:** _____

Limitations: This assay allows for microscopic visualization of numerical and structural chromosome abnormalities. The size of structural abnormality that can be detected is >3-10Mb, dependent upon the G-band resolution obtained from this specimen. For the purposes of this report, band level is defined as the number of G-bands per haploid genome. It is documented here as "band level", i.e., the range of bands determined from the four karyograms in this assay. Detection of heterogeneity of clonal cell populations in this specimen (i.e., mosaicism) is limited by the number of metaphase cells examined, documented here as "# of cells counted".

This assay was conducted solely for listed investigator/institution. The results of this assay are for research use only. Unless otherwise mutually agreed in writing, the services provided to you hereunder by WiCell Research Institute, Inc. ("WiCell") are governed solely by WiCell's Terms and Conditions of Service, found at www.wicell.org/privacyandterms. Any terms you may attach to a purchase order or other document that are inconsistent, add to, or conflict with WiCell's Terms and Conditions of Service are null and void and of no legal force or effect.

Department of Pathology and Laboratory Medicine
TRIP Laboratory (Molecular)
<https://research.pathology.wisc.edu/trip-home/>
(608) 265-9168

characterization@wicell.org
(608) 316-4145

Sample Report:

14638-STR

Sample Name on Tube: 14638-STR

54.8 ng/μL, (A260/280=1.97)

Sample Type: Cells

Cell Count: ~2 million cells

Requestor:

WiCell Research Institute

Quality Assurance Department

Receive Date: 05/20/19

Report Sent: 05/24/19

Assay Date: 05/21/19

File Name: STR 190522 wmr

Report Date: 05/23/19

STR Locus	STR Genotype Repeat #	STR Genotype
FGA	16-18,18.2,19,19.2,20,20.2,21,21.2,22, 22.2, 23, 23.2, 24, 24.2, 25, 25.2, 26-30, 31.2, 43.2, 44.2,45.2, 46.2	Identifying information has been redacted to protect donor confidentiality. If more information is required, please, contact WiCell's Technical Support .
TPOX	6-13	
D8S1179	7-18	
vWA	10-22	
Amelogenin	X,Y	
Penta_D	2.2, 3.2, 5, 7-17	
CSF1PO	6-15	
D16S539	5, 8-15	
D7S820	6-14	
D13S317	7-15	
D5S818	7-16	
Penta_E	5-24	
D18S51	8-10, 10.2, 11-13, 13.2, 14-27	
D21S11	24,24.2,25,25.2,26-28,28.2,29,29.2, 30, 30.2,31, 31.2,32,32.2,33,33.2, 34,34.2,35,35.2,36-38	
TH01	4-9,9.3,10-11,13.3	
D3S1358	12-20	

Results: Based on the 14638-STR cells submitted by WiCell QA dated and received on 05/20/19, this sample (Label on Tube: 14638-STR) defines the STR profile of the human cell line UCSD220i-118-1 comprising 27 allelic polymorphisms across the 15 STR loci analyzed.

Interpretation: No STR polymorphisms other than those corresponding to the human UCSD220i-118-1 cell line were detected and the concentration of DNA required to achieve an acceptable STR genotype (signal/ noise) was equivalent to that required for the standard procedure (~1 ng/amplification reaction) from human genomic DNA. This result suggests that the 14638-STR sample submitted corresponds to the UCSD220i-118-1 cell line and was not contaminated with any other human cells or a significant amount of mouse feeder layer cells.

Sensitivity: Sensitivity limits for detection of STR polymorphisms unique to either this or other human cell lines is ~2-5%.

X *RMB*

Digitally Signed on 05/24/19

██████████, BA
TRIP Laboratory, Molecular

X *WMR*

Digitally Signed on 05/24/19

██████████ PhD, Director / Co-Director
UWHC Molecular Diagnostics Laboratory / UWSMPH TRIP Laboratory

Testing was accomplished by analysis of human genetic polymorphisms at STR loci. This methodology has not yet been approved by the FDA and is for investigational use only.

Acknowledge TRIP in your publications, posters & presentations. For details, see: <https://research.pathology.wisc.edu/acknowledging-trip/>
Unless otherwise mutually agreed in writing, the services provided to you hereunder by WiCell Research Institute, Inc. ("WiCell") are governed solely by WiCell's Terms and Conditions of Service, found at <https://www.wicell.org/media.acux/ca76d97c-862a-43f3-b02a-ab2d1e619100>. Any terms you may attach to a purchase order or other document that are inconsistent, add to, or conflict with WiCell's Terms and Conditions of Service are null and void and of no legal force or effect.

Native Product Sterility Report



WiCell
504 S Rosa Rd., Rm 101
Madison, WI 53719

SAMPLE #: 17121102
DATE RECEIVED: 14-Dec-17
TEST INITIATED: 14-Dec-17
TEST COMPLETED: 02-Jan-18

SAMPLE NAME / DESCRIPTION: UCSD033i-41-2 WB54901 13153
UCSD037i-26-2 WB65027 13154
UCSD039i-14-3 WB57650 13155
UCSD040i-33-1 WB61158 13156
UCSD041i-33-2 WB60323 13157
UCSD043i-47-1 WB61824 13158
UCSD045i-49-1 WB62417 13159
UCSD046i-50-1 WB60581 13160
UCSD047i-51-1 WB54782 13161
UCSD049i-53-1 WB57867 13162
UCSD114i-69-1 WB55346 13163
UCSD150i-11-1 WB58932 13164
UCSD154i-90-1 WB58798 13165
UCSD164i-96-1 WB58713 13166
UCSD180i-27-2 WB60894 13167
UCSD204i-26-1 WB62522 13168
UCSD216i-114-1 WB65031 13169
UCSD220i-118-1 WB60019 13170
iPS (Foreskin)-4 WB66699 13171
WISC015i-SC7 DB66675 13172

UNIQUE IDENTIFIER: NA
PRODUCT REGISTRATION: Other: Human iPS cells

TEST RESULTS:

# Tested	# Positives (Growth)	- Control
20	0	4 Negatives

TEST SUMMARY:

# Samples	Media Type	Volume (mL)	Incubation Temperature (° C)	Incubation Duration (Days)
20	TSB	40	20-25	15
20	FTG	40	30-35	15

REFERENCE: Processed according to LAB-003: Sterility Test Procedure

METHOD VALIDATION / PD #: 000053

Native Product Sterility Report



TEST METHODOLOGY: USP - Direct Transfer

COMMENTS: NA

REVIEWED BY

A handwritten signature in blue ink, consisting of several loops and a long horizontal stroke, positioned above a solid black horizontal line.

DATE

03 JAN 18

Specific test results may not be indicative of the characteristics of any other samples from the same lot or similar lots. This test report shall not be reproduced, except in full, without prior written approval. Liability is limited to the costs of the tests.



Mycoplasma Assay Report

PCR-based assay performed by WiCell

Lot Release Testing

14May19

FORM SOP-CH-044.03

Version B Edition 01

#	Sample Name	Result	Comments/Suggestions
1	UCSD220i-118-1-WB60019 14638	Negative	Band was not seen at 270bp, indicating the absence of mycoplasma.
2	Positive (+) Control	Positive	
3	Negative (-) Control	Negative	

Reported by: Brenna Anderson, Research Specialist- Cytogenetics

Reviewed by: Sondra Minter, Cell Culture Specialist

Date: _____ **Sent By:** _____ **Sent To:** _____

Unless otherwise mutually agreed in writing, the services provided to you hereunder by WiCell Research Institute, Inc. ("WiCell") are governed solely by WiCell's Terms and Conditions of Service, found at www.wicell.org/privacyandterms. Any terms you may attach to a purchase order or other document that are inconsistent, add to, or conflict with WiCell's Terms and Conditions of Service are null and void and of no legal force or effect.

A gel image is available upon request.