




## Thaw and Culture Details

Cell Line Name	<b>WC030i-5907-2</b>
WiCell Lot Number	<b>WB66544</b>
Provider	University of Wisconsin – Laboratory of Anita Bhattacharyya
Banked By	WiCell
Thaw and Culture Recommendations	WiCell recommends thawing 1 vial into 3 wells of a 6 well plate.
Culture Platform	Feeder Independent
	Medium: mTeSR™1
	Matrix: Matrigel®
Protocol	WiCell Feeder Independent mTeSR™1 Protocol
Passage Number	p10 These cells were cultured for 9 passages prior to freeze and post reprogramming. WiCell adds +1 to the passage number to best represent the overall passage number of the cells at thaw.
Date Vialied	20-August-2017
Vial Label	WC030i-5907-2 p10 WB66544
Biosafety and Use Information	Appropriate biosafety precautions should be followed when working with these cells. The end user is responsible for ensuring that the cells are handled and stored in an appropriate manner. WiCell is not responsible for damages or injuries that may result from the use of these cells. Cells distributed by WiCell are intended for research purposes only and are not intended for use in humans.

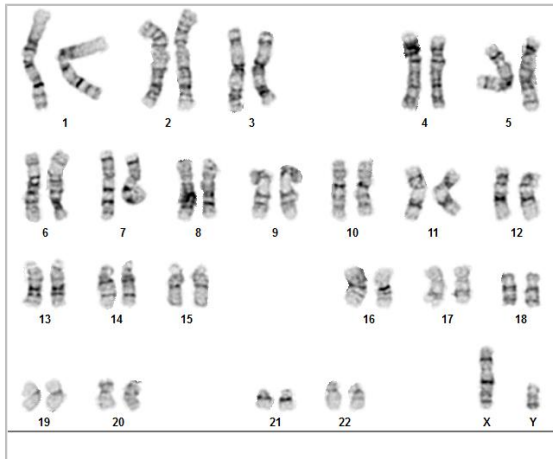
## Testing Performed by WiCell

Test Description	Test Provider	Test Method	Test Specification	Result
Karyotype by G-banding	WiCell	SOP-CH-003	Expected karyotype	Pass
Post-Thaw Viable Cell Recovery	WiCell	SOP-CH-305	≥ 15 Undifferentiated Colonies, ≤ 30% Differentiation and recoverable attachment after passage	Pass
Identity by STR	UW Translational Research Initiatives in Pathology Laboratory	PowerPlex 16 HS System by Promega	Defines profile	Pass
Sterility	Steris	ST/07	Negative	Pass
Mycoplasma	WiCell	SOP-QU-004	Negative	Pass

Approval Date	Quality Assurance Approval
02-November-2017	<div style="text-align: right; font-size: small;">11/2/2017</div>  <div style="font-size: x-small;">           X RK            RK            Quality Assurance            Signed by Kremers, Erik         </div>

**Date Reported:** Tuesday, October 03, 2017  
**Cell Line:** WC030i-5907-2-WB66544 12895  
**Passage#:** 10  
**Date of Sample:** 9/21/2017  
**Specimen:** Human iPSC  
**Results:** 46,XY

**Cell Line Gender:** Male  
**Reason for Testing:** resubmission of 12795 due to poor harvest  
**Investigator:** [REDACTED], WiCell CDM



**Cell:** 11  
**Slide:** G01  
**Slide Type:** Karyotype

**Total Counted:** 20  
**Total Analyzed:** 8  
**Total Karyogrammed:** 4  
**Band Resolution:** 425 - 450

### Interpretation:

**This is a normal karyotype. No clonal abnormalities were detected at the stated band level of resolution.**

**Completed by:** [REDACTED] MS, CG(ASCP)  
**Reviewed and Interpreted by:** [REDACTED], PhD, FACMG  
**A signed copy of this report is available upon request.**

**Date:** \_\_\_\_\_ **Sent By:** \_\_\_\_\_ **Sent To:** \_\_\_\_\_ **QC Review By:** \_\_\_\_\_

*Limitations: This assay allows for microscopic visualization of numerical and structural chromosome abnormalities. The size of structural abnormality that can be detected is >3-10Mb, dependent upon the G-band resolution obtained from this specimen. For the purposes of this report, band level is defined as the number of G-bands per haploid genome. It is documented here as "band level", i.e., the range of bands determined from the four karyograms in this assay. Detection of heterogeneity of clonal cell populations in this specimen (i.e., mosaicism) is limited by the number of metaphase cells examined, documented here as "# of cells counted".*

*This assay was conducted solely for listed investigator/institution. The results may not be relied upon by any other party without the prior written consent of the Director of the WiCell Cytogenetics Laboratory. The results of this assay are for research use only. If the results of this assay are to be used for any other purpose, contact the Director of the WiCell Cytogenetics Laboratory.*

*Unless otherwise mutually agreed in writing, the services provided to you hereunder by WiCell Research Institute, Inc. ("WiCell") are governed solely by WiCell's Terms and Conditions of Service, found at [www.wicell.org/privacyandterms](http://www.wicell.org/privacyandterms). Any terms you may attach to a purchase order or other document that are inconsistent, add to, or conflict with WiCell's Terms and Conditions of Service are null and void and of no legal force or effect.*

# Short Tandem Repeat Analysis

Department of Pathology and Laboratory Medicine  
TRIP Laboratory (Molecular)  
<http://www.pathology.wisc.edu/research/trip>

WiCell®  
info@wicell.org  
(888) 204-1782

**Sample Report:**

12795-STR  
**Sample Name on Tube:** 12795-STR  
23.4 ng/μL, (A260/280=1.99)  
**Sample Type:** Cells  
**Cell Count:** ~2 million cells

**Requestor:**

WiCell Research Institute  
Quality Department

**Sample Date:** N/A

**Receive Date:** 09/05/17  
**Assay Date:** 09/12/17  
**File Name:** 170913 STR WMR  
**Report Date:** 09/15/17

STR Locus	STR Genotype Repeat #	STR Genotype
FGA	16-18,18.2,19,19.2,20,20.2,21,21.2,22, 22.2, 23, 23.2, 24, 24.2, 25, 25.2, 26-30, 31.2, 43.2, 44.2,45.2, 46.2	Identifying information has been redacted to protect donor confidentiality. If more information is required, please, contact <a href="#">WiCell's Technical Support</a> .
TPOX	6-13	
D8S1179	7-18	
vWA	10-22	
Amelogenin	X,Y	
Penta_D	2.2, 3.2, 5, 7-17	
CSF1PO	6-15	
D16S539	5, 8-15	
D7S820	6-14	
D13S317	7-15	
D5S818	7-16	
Penta_E	5-24	
D18S51	8-10, 10.2, 11-13, 13.2, 14-27	
D21S11	24,24.2,25,25.2,26-28,28.2,29,29.2, 30, 30.2,31, 31.2,32,32.2,33,33.2, 34,34.2,35,35.2,36-38	
TH01	4-9,9.3,10-11,13.3	
D3S1358	12-20	

**Results:** Based on the 12795-STR cells submitted by WiCell QA dated and received on 09/05/17, this sample (Label on Tube: 12795-STR) defines the STR profile of the human stem cell line WC030i-5907-2 comprising 29 allelic polymorphisms across the 15 STR loci analyzed.

**Interpretation:** No STR polymorphisms other than those corresponding to the human WC030i-5907-2 stem cell line were detected and the concentration of DNA required to achieve an acceptable STR genotype (signal/noise) was equivalent to that required for the standard procedure (~1 ng/amplification reaction) from human genomic DNA. This result suggests that the 12795-STR sample submitted corresponds to the WC030i-5907-2 stem cell line and was not contaminated with any other human stem cells or a significant amount of mouse feeder layer cells.

**Sensitivity:** Sensitivity limits for detection of STR polymorphisms unique to either this or other human stem cell lines is ~2-5%.

X<sub>RMB</sub>

Digitally Signed on 09/15/17

X<sub>WMR</sub>

Digitally Signed on 09/15/17

TRIP Laboratory, Molecular

PhD, Director / Co-Director  
UWHC Molecular Diagnostics Laboratory / UWSMPH TRIP Laboratory

# Native Product Sterility Report



WiCell  
504 S Rosa Rd, Rm 101  
Madison, WI 53719

SAMPLE #: 17081954  
DATE RECEIVED: 31-Aug-17  
TEST INITIATED: 06-Sep-17  
TEST COMPLETED: 20-Sep-17

SAMPLE NAME / DESCRIPTION: WC027i-5807-5-WB66542 12785  
WC028i-5807-6-WB66555 12786  
WC029i-5907-1-WB66543 12787  
WC030i-5907-2-WB66544 12788  
WC031i-5907-6-WB66556 12789  
UCSD082i-40-1-WB60394 12790  
UCSD092i-1-10-WB63301 12791  
UCSD093i-1-11-WB64617 12792  
MCW109i-40001470-WB66547 12793  
MCW064i-40001159-WB66546 12794

UNIQUE IDENTIFIER: NA  
PRODUCT REGISTRATION: Human iPS cells

### TEST RESULTS:

# Tested	# Positives (Growth)	- Control
10	0	2 Negatives

### TEST SUMMARY:

# Samples	Media Type	Volume (mL)	Incubation Temperature (° C)	Incubation Duration (Days)
10	TSB	40	20 - 25	14
10	FTG	40	30 - 35	14

REFERENCE: Processed according to LAB-003: Sterility Test Procedure  
METHOD VALIDATION / PD #: 000053  
TEST METHODOLOGY: USP - Direct Transfer

COMMENTS: NA

REVIEWED BY *D. Sarsad*

DATE 21 SEP 17

Specific test results may not be indicative of the characteristics of any other samples from the same lot or similar lots. This test report shall not be reproduced, except in full, without prior written approval. Liability is limited to the costs of the tests.



# Mycoplasma Detection Assay Report

Testing Performed by WiCell

Lot Release Testing

August 28, 2017

FORM SOP-QU-004.01

Version F Edition 02

Reported by: KR

Reviewed by: JB

Berthold Flash n' Glo 539

#	Sample Name	Reading A		A Ave	Reading B		B Ave	Ratio B/A	Result	Comments/Suggestions
		RLU1	RLU2		RLU1	RLU2				
1	WC030i-5907-2-WB66544 12795	83	82	82.5	22	23	22.5	0.27	Negative	
2	Positive (+) Control	165	166	165.5	17611	17643	17627	106.51	Positive	
3	Negative (-) Control	257	263	260	36	30	33	0.13	Negative	

