



Thaw and Culture Details

Cell Line Name	CREM022i-SS32-1
WiCell Lot Number	WB66732
Provider	Boston University – Laboratory of Dr. Martin Steinberg
Banked By	WiCell
Thaw and Culture Recommendations	WiCell recommends thawing 1 vial into 3 wells of a 6 well plate.
Culture Platform	Feeder Independent
	Medium: mTeSR™1
	Matrix: Matrigel®
Protocol	WiCell Feeder Independent mTeSR™1 Protocol
Passage Number	p11 These cells were cultured for 10 passages prior to freeze and post colony picking. WiCell adds +1 to the passage number at freeze to best represent what the overall passage number of the cells at thaw. Plated cells at thaw should be labeled passage 11.
Date Vialied	06-February-2018
Vial Label	CREM022i-SS32-1 p11 WB66732
Biosafety and Use Information	Appropriate biosafety precautions should be followed when working with these cells. The end user is responsible for ensuring that the cells are handled and stored in an appropriate manner. WiCell is not responsible for damages or injuries that may result from the use of these cells. Cells distributed by WiCell are intended for research purposes only and are not intended for use in humans.

Testing Performed by WiCell

Test Description	Test Provider	Test Method	Test Specification	Result
Karyotype by G-banding	WiCell	SOP-CH-003	Expected karyotype	See Report
Post-Thaw Viable Cell Recovery	WiCell	SOP-CH-305	≥ 15 Undifferentiated Colonies, ≤ 30% Differentiation and recoverable attachment after passage	Pass
Identity by STR	UW Translational Research Initiatives in Pathology Laboratory	PowerPlex 16 HS System by Promega	Defines STR profile of deposited cell line	Pass
Sterility	Steris	ST/07	Negative	Pass
Mycoplasma	WiCell	SOP-QU-004	Negative	Pass

Testing Reported by Provider

The Provider stated that some or all of the additional analyses listed below may have been performed for this cell line. For more information, publication and dbGaP links, where available, are provided on the cell line specific web page on the WiCell website.

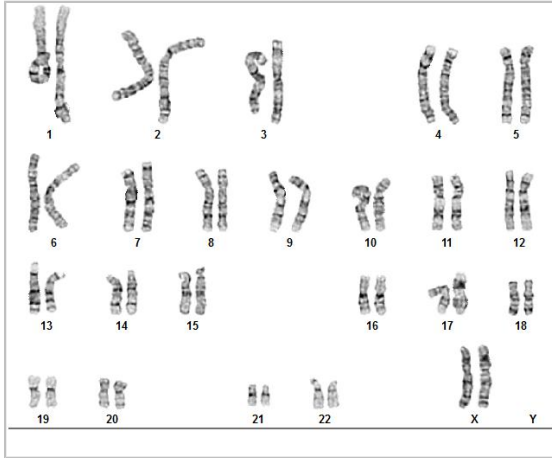
- Digital Genome Sequencing
- Infinium® Expanded Multi-Ethnic Genotyping Array (MEGA^{EX})



Approval Date	Quality Assurance Approval
21-June-2018	<p style="text-align: right;">5/27/2020</p> <p>X HEB HEB Quality Assurance Signed by: Bruner, Halley</p>

Date Reported: Thursday, February 22, 2018
Cell Line: CREM022i-SS32-1-WB66732 13443
Passage#: 11
Date of Sample: 2/16/2018
Specimen: Human IPS
Results: 46,XX

Cell Line Gender: Female
Reason for Testing: lot release testing
Investigator: [REDACTED], WiCell CDM



Cell: 55
Slide: G01
Slide Type: Karyotype
Total Counted: 20
Total Analyzed: 9
Total Karyogrammed: 5
Band Resolution: 500 - 550

Interpretation:

This is a normal karyotype. No clonal abnormalities were detected at the stated band level of resolution.

Completed by: [REDACTED], CG(ASCP)
Reviewed and Interpreted by: [REDACTED], PhD, FACMG
A signed copy of this report is available upon request.

Date: _____ **Sent By:** _____ **Sent To:** _____ **QC Review By:** _____

Limitations: This assay allows for microscopic visualization of numerical and structural chromosome abnormalities. The size of structural abnormality that can be detected is >3-10Mb, dependent upon the G-band resolution obtained from this specimen. For the purposes of this report, band level is defined as the number of G-bands per haploid genome. It is documented here as "band level", i.e., the range of bands determined from the four karyograms in this assay. Detection of heterogeneity of clonal cell populations in this specimen (i.e., mosaicism) is limited by the number of metaphase cells examined, documented here as "# of cells counted".

This assay was conducted solely for listed investigator/institution. The results may not be relied upon by any other party without the prior written consent of the Director of the WiCell Cytogenetics Laboratory. The results of this assay are for research use only. If the results of this assay are to be used for any other purpose, contact the Director of the WiCell Cytogenetics Laboratory.

Unless otherwise mutually agreed in writing, the services provided to you hereunder by WiCell Research Institute, Inc. ("WiCell") are governed solely by WiCell's Terms and Conditions of Service, found at www.wicell.org/privacyandterms. Any terms you may attach to a purchase order or other document that are inconsistent, add to, or conflict with WiCell's Terms and Conditions of Service are null and void and of no legal force or effect.

Short Tandem Repeat Analysis

Sample Report:

13443-STR

Sample Name on Tube: 13443-STR118.3 ng/ μ L, (A260/280=1.97)**Sample Type:** Cells**Cell Count:** ~2 million cells**Requestor:**

WiCell Research Institute

Quality Department

Sample Date: N/A**Receive Date:** 02/26/18**Assay Date:** 02/27/18**File Name:** STR 180228 wmr**Report Date:** 03/05/18

STR Locus	STR Genotype Repeat #	STR Genotype
FGA	16-18,18.2,19,19.2,20,20.2,21,21.2,22, 22.2, 23, 23.2, 24, 24.2, 25, 25.2, 26-30, 31.2, 43.2, 44.2,45.2, 46.2	Identifying information has been redacted to protect donor confidentiality. If more information is required, please, contact WiCell's Technical Support .
TPOX	6-13	
D8S1179	7-18	
vWA	10-22	
Amelogenin	X,Y	
Penta_D	2.2, 3.2, 5, 7-17	
CSF1PO	6-15	
D16S539	5, 8-15	
D7S820	6-14	
D13S317	7-15	
D5S818	7-16	
Penta_E	5-24	
D18S51	8-10, 10.2, 11-13, 13.2, 14-27	
D21S11	24,24.2,25,25.2,26-28,28.2,29,29.2, 30, 30.2,31, 31.2,32,32.2,33,33.2, 34,34.2,35,35.2,36-38	
TH01	4-9,9.3,10-11,13.3	
D3S1358	12-20	

Results: Based on the 13443-STR cells submitted by WiCell QA dated and received on 02/26/18, this sample (Label on Tube: 13443-STR) defines the STR profile of the human stem cell line CREM022i-SS32-1 comprising 27 allelic polymorphisms across the 15 STR loci analyzed.

Interpretation: No STR polymorphisms other than those corresponding to the human CREM022i-SS32-1 stem cell line were detected and the concentration of DNA required to achieve an acceptable STR genotype (signal/noise) was equivalent to that required for the standard procedure (~1 ng/amplification reaction) from human genomic DNA. This result suggests that the 13443-STR sample submitted corresponds to the CREM022i-SS32-1 stem cell line and was not contaminated with any other human stem cells or a significant amount of mouse feeder layer cells.


Sensitivity: Sensitivity limits for detection of STR polymorphisms unique to either this or other human stem cell lines is ~2-5%.



Digitally Signed on 03/06/18

 BA
TRIP Laboratory, Molecular

Digitally Signed on 03/06/18

, PhD, Director / Co-Director
UWHC Molecular Diagnostics Laboratory / UWSMPH TRIP Laboratory

Testing was accomplished by analysis of human genetic polymorphisms at STR loci. This methodology has not yet been approved by the FDA and is for investigational use only.

Acknowledge TRIP in your publications, posters & presentations. For details, see: <http://www.pathology.wisc.edu/research/trip/acknowledging>

TRIP agrees to maintain the confidentiality of any information provided to it in connection with its performance of this STR analysis on the same conditions as set forth in paragraph 2 of WiCell's Terms and Conditions of Service (<http://www.wicell.org/media.acux/1a429b84-2b54-44a4-8ad8-5c05db93dd8a>).

Native Product Sterility Report



WiCell
504 S Rosa Rd, Rm 101
Madison, WI 53719

SAMPLE #: 18021403
DATE RECEIVED: 22-Feb-18
TEST INITIATED: 23-Feb-18
TEST COMPLETED: 09-Mar-18

SAMPLE NAME / DESCRIPTION: AI03e-DCXYFP DB66690 13456
AI06e-SOX2YFP DB66691 13457
AI07e-Timothy DB66692 13458
AI08e-PAX6YFP DB66693 13459
AI09e-KCTD13a DB66694 13460
AI10e-KCTD13b DB66695 13461
AI11e-OTX2YFP DB66696 13462
AI12e-HOPX-CIT+/- DB66697 13463
AI13e-HOPX-CIT+/+ DB66698 13464
CREM022i-SS32-1 WB66732 13466
iPS(IMR90)-1 WB66731 13467
STAN004i-147-1 DB31065 13468
STAN005i-147-2 DB31088 13469
STAN024i-29-1 DB30891 13470
STAN025i-29-2 DB30897 13471
WC034i-SOD1-D90A WB66734 13472
WC035i-SOD1-D90D WB66733 13473
WISC015i-SC7 WB66735 13474
WC008i-C603-4 WB66741 13475
WC034i-SOD1-D90A WB66740 13484

UNIQUE IDENTIFIER: NA
PRODUCT REGISTRATION: Other: Human iPS cells

TEST RESULTS:

# Tested	# Positives (Growth)	- Control
20	0	3 Negatives

TEST SUMMARY:

# Samples	Media Type	Volume (mL)	Incubation Temperature (° C)	Incubation Duration (Days)
20	TSB	40	20 - 25	14
20	FTG	40	30-35	14

REFERENCE: Processed according to LAB-003: Sterility Test Procedure

METHOD VALIDATION / PD #: 000053

Native Product Sterility Report



TEST METHODOLOGY: USP - Direct Transfer

COMMENTS: NA
18021403

REVIEWED BY *Densad*

DATE 22 MAR 18

Specific test results may not be indicative of the characteristics of any other samples from the same lot or similar lots. This test report shall not be reproduced, except in full, without prior written approval. Liability is limited to the costs of the tests.



Mycoplasma Detection Assay Report

Testing Performed by WiCell

Lot Release Testing

February 15, 2018

FORM SOP-QU-004.01

Version G Edition 02

Reported by: AP

Reviewed by: JB

BD Monolight 180

#	Sample Name	Reading A			Reading B			Ratio B/A	Result	Comments/Suggestions
		RLU1	RLU2	Ave	RLU1	RLU2	Ave			
1	CREM022i-SS32-1-WB66732 13443	209	208	208.5	70	61	65.5	0.31	Negative	
2	Positive (+) Control	360	381	370.5	14525	14630	14578	39.35	Positive	
3	Negative (-) Control	611	629	620	69	63	66	0.11	Negative	

