



Thaw and Culture Details

Cell Line Name	MCW047i-U2234
WiCell Lot Number	WB66742
Provider	Medical College of Wisconsin – Laboratory of Dr. Ulrich Broeckel
Banked By	WiCell
Thaw and Culture Recommendations	WiCell recommends thawing 1 vial into 3 well of a 6 well plate.
Culture Platform	Feeder Independent
	Medium: TeSR™-E8™
	Matrix: Matrigel®
Protocol	WiCell Feeder Independent E8 Medium Protocol
Passage Number	p13 These cells were cultured for 13 passages prior to freeze and post colony picking. Add +1 to the passage number to best represent the overall passage number of the cells at thaw.
Date Vialied	22-FEBRUARY-2018
Vial Label	MCW047i-U2234 p13 WB66742
Biosafety and Use Information	Appropriate biosafety precautions should be followed when working with these cells. The end user is responsible for ensuring that the cells are handled and stored in an appropriate manner. WiCell is not responsible for damages or injuries that may result from the use of these cells. Cells distributed by WiCell are intended for research purposes only and are not intended for use in humans.

Testing Performed by WiCell

Test Description	Test Provider	Test Method	Test Specification	Result
Karyotype by G-banding	WiCell	SOP-CH-003	Expected karyotype	See Report
Post-Thaw Viable Cell Recovery	WiCell	SOP-CH-305	≥ 15 Undifferentiated Colonies, ≤ 30% Differentiation and recoverable attachment after passage	Pass
Identity by STR	UW Translational Research Initiatives in Pathology Laboratory	PowerPlex 16 HS System by Promega	Defines profile	Pass
Sterility	Steris	ST/07	Negative	Pass
Mycoplasma	WiCell	SOP-QU-004	Negative	Pass

Testing Reported by Provider

The Provider stated that some or all of the additional analyses listed below may have been performed for this cell line. For more information, publication and dbGaP links, where available, are provided on the cell line specific web page on the WiCell website.

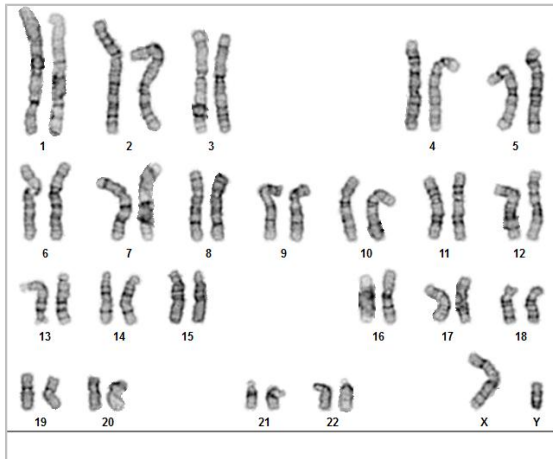
- Tra1-60 marker expression
- mRNA expression by qPCR
- Infinium® Expanded Multi-Ethnic Genotyping Array (MEGA^{EX})



Approval Date	Quality Assurance Approval
04-June-2018	<p style="text-align: right;">6/4/2018</p> <p>X HEB</p> <p><small>HEB Quality Assurance Signed by Bruner, Haley</small></p>

Date Reported: Tuesday, March 13, 2018
Cell Line: MCW047i-U2234-WB66742 13515
Passage#: 13
Date of Sample: 3/6/2018
Specimen: Human iPSC
Results: 46,XY

Cell Line Gender: Male
Reason for Testing: lot release testing
Investigator: [REDACTED], WiCell



Cell: 38
Slide: G01
Slide Type: Karyotype
Total Counted: 20
Total Analyzed: 8
Total Karyogrammed: 4
Band Resolution: 425 - 500

Interpretation:

This is a normal karyotype. No clonal abnormalities were detected at the stated band level of resolution.

Completed by: [REDACTED], CG(ASCP)
Reviewed and Interpreted by: [REDACTED], PhD, FACMG
A signed copy of this report is available upon request.

Date: _____ **Sent By:** _____ **Sent To:** _____ **QC Review By:** _____

Limitations: This assay allows for microscopic visualization of numerical and structural chromosome abnormalities. The size of structural abnormality that can be detected is >3-10Mb, dependent upon the G-band resolution obtained from this specimen. For the purposes of this report, band level is defined as the number of G-bands per haploid genome. It is documented here as "band level", i.e., the range of bands determined from the four karyograms in this assay. Detection of heterogeneity of clonal cell populations in this specimen (i.e., mosaicism) is limited by the number of metaphase cells examined, documented here as "# of cells counted".

This assay was conducted solely for listed investigator/institution. The results may not be relied upon by any other party without the prior written consent of the Director of the WiCell Cytogenetics Laboratory. The results of this assay are for research use only. If the results of this assay are to be used for any other purpose, contact the Director of the WiCell Cytogenetics Laboratory.

Unless otherwise mutually agreed in writing, the services provided to you hereunder by WiCell Research Institute, Inc. ("WiCell") are governed solely by WiCell's Terms and Conditions of Service, found at www.wicell.org/privacyandterms. Any terms you may attach to a purchase order or other document that are inconsistent, add to, or conflict with WiCell's Terms and Conditions of Service are null and void and of no legal force or effect.



Short Tandem Repeat Analysis



HISTOLOGY - IHC - MOLECULAR - IMAGING

Department of Pathology and Laboratory Medicine

TRIP Laboratory (Molecular)

<http://www.pathology.wisc.edu/research/trip>

WiCell®
info@wicell.org
(888) 204-1782

Sample Report:

13515-STR

Sample Name on Tube: 13515-STR

67.2 ng/μL, (A260/280=1.76)

Sample Type: Cells

Cell Count: ~2 million cells

Requestor:

WiCell Research Institute

Quality Department

Sample Date: N/A

Receive Date: 03/12/18

Assay Date: 03/13/18

File Name: STR 180314 wmr

Report Date: 03/21/18

STR Locus	STR Genotype Repeat #	STR Genotype
FGA	16-18,18.2,19,19.2,20,20.2,21,21.2,22, 22.2, 23, 23.2, 24, 24.2, 25, 25.2, 26-30, 31.2, 43.2, 44.2,45.2, 46.2	Identifying information has been redacted to protect donor confidentiality. If more information is required, please, contact WiCell's Technical Support .
TPOX	6-13	
D8S1179	7-18	
vWA	10-22	
Amelogenin	X,Y	
Penta_D	2.2, 3.2, 5, 7-17	
CSF1PO	6-15	
D16S539	5, 8-15	
D7S820	6-14	
D13S317	7-15	
D5S818	7-16	
Penta_E	5-24	
D18S51	8-10, 10.2, 11-13, 13.2, 14-27	
D21S11	24,24.2,25,25.2,26-28,28.2,29,29.2, 30, 30.2,31, 31.2,32,32.2,33,33.2, 34,34.2,35,35.2,36-38	
TH01	4-9,9.3,10-11,13.3	
D3S1358	12-20	

Results: Based on the 13515-STR cells submitted by WiCell QA dated and received on 03/12/18, this sample (Label on Tube: 13515-STR) defines the STR profile of the human stem cell line MCW047i-U2234 comprising 25 allelic polymorphisms across the 15 STR loci analyzed.

Interpretation: No STR polymorphisms other than those corresponding to the human MCW047i-U2234 stem cell line were detected and the concentration of DNA required to achieve an acceptable STR genotype (signal/noise) was equivalent to that required for the standard procedure (~1 ng/amplification reaction) from human genomic DNA. This result suggests that the 13515-STR sample submitted corresponds to the MCW047i-U2234 stem cell line and was not contaminated with any other human stem cells or a significant amount of mouse feeder layer cells.

Sensitivity: Sensitivity limits for detection of STR polymorphisms unique to either this or other human stem cell lines is ~2-5%.

X *RMB*

Digitally Signed on 03/22/18

BA
TRIP Laboratory, Molecular

X *WMR*

Digitally Signed on 03/22/18

, PhD, Director / Co-Director
UWHC Molecular Diagnostics Laboratory / UWSMPH TRIP Laboratory

Testing was accomplished by analysis of human genetic polymorphisms at STR loci. This methodology has not yet been approved by the FDA and is for investigational use only.

Acknowledge TRIP in your publications, posters & presentations. For details, see: <http://www.pathology.wisc.edu/research/trip/acknowledging>

TRIP agrees to maintain the confidentiality of any information provided to it in connection with its performance of this STR analysis on the same conditions as set forth in paragraph 2 of WiCell's Terms and Conditions of Service (<http://www.wicell.org/media.acux/1a429b84-2b54-44a4-8ad8-5c05db93dd8a>).

Native Product Sterility Report



WiCell
504 S Rosa Rd, Rm 101
Madison, WI 53719

SAMPLE #: 18031509
DATE RECEIVED: 22-Mar-18
TEST INITIATED: 26-Mar-18
TEST COMPLETED: 09-Apr-18

SAMPLE NAME / DESCRIPTION: MCW047i-U2234 WB66742 13573
PENN105i-342-5 DB34860 13574
PENN144i-M7-16 DB36290 13575
PENN148i-M8-3 DB35007 13576
PENN150i-M7-9 DB35003 13577
PENN156i-M8-2 DB34864 13578
WISC015i-SC7 WB66749 13579
CREM032i-SS48-1 WB66748 13580
UCSD030i-23-2 WB58975 13581
UCSD170i-22-3 WB60774 13582

UNIQUE IDENTIFIER: NA
PRODUCT REGISTRATION: Other: Human iPS cells

TEST RESULTS:

# Tested	# Positives (Growth)	- Control
10	0	2 Negatives

TEST SUMMARY:

# Samples	Media Type	Volume (mL)	Incubation Temperature (° C)	Incubation Duration (Days)
10	TSB	40	20-25	14
10	FTG	40	30-35	14

REFERENCE: Processed according to LAB-003: Sterility Test Procedure

METHOD VALIDATION / PD #: 000053

TEST METHODOLOGY: USP - Direct Transfer

COMMENTS: Reported as, per packing slip

REVIEWED BY *D. Leonard*

DATE 10 APR 18

Specific test results may not be indicative of the characteristics of any other samples from the same lot or similar lots. This test report shall not be reproduced, except in full, without prior written approval. Liability is limited to the costs of the tests.



Mycoplasma Detection Assay Report

Testing Performed by WiCell

Lot Release Testing

March 9th, 2018

FORM SOP-QU-004.01

Version G Edition 02

Reported by: SM

Reviewed by: JB

Berthold Flash n' Glo 539

#	Sample Name	Reading A			Reading B			Ratio B/A	Result	Comments/Suggestions
		RLU1	RLU2	Ave	RLU1	RLU2	Ave			
1	MCW047i-U2234-WB66742 13515	121	118	119.5	45	46	45.5	0.38	Negative	
2	Positive (+) Control	169	167	168	7561	7602	7582	45.13	Positive	
3	Negative (-) Control	286	286	286	38	40	39	0.14	Negative	

