



## Thaw and Culture Details

Cell Line Name	<b>MCW012i-A7156</b>
WiCell Lot Number	<b>WB67051</b>
Parent Material	MCW012i-A7156-DB66317
Provider	Medical College of Wisconsin – Laboratory of Dr. Ulrich Broeckel
Banked By	WiCell
Thaw and Culture Recommendations	WiCell recommends thawing 1 vial into 3 wells of a 6 well plate.
Culture Platform	Feeder Independent
	Medium: mTeSR™1
	Matrix: Matrigel®
Protocol	WiCell Feeder Independent mTeSR™1 Protocol
Passage Number	p16 These cells were cultured for 15 passages prior to freeze and post colony selection. WiCell adds +1 to the passage number at freeze to best represent the overall passage number of the cells at thaw. Plated cells at thaw should be labeled passage 16.
Date Viald	10-March-2019
Vial Label	MCW012i-A7156 p16 WB67051
Biosafety and Use Information	Appropriate biosafety precautions should be followed when working with these cells. The end user is responsible for ensuring that the cells are handled and stored in an appropriate manner. WiCell is not responsible for damages or injuries that may result from the use of these cells. Cells distributed by WiCell are intended for research purposes only and are not intended for use in humans.

## Testing Performed by WiCell

Test Description	Test Provider	Test Method	Test Specification	Result
Karyotype by G-banding	WiCell	SOP-CH-003	Expected karyotype	See Report
	<p><b>Results:</b> 47,XX, +i(12)(p10)[5]/46,XX[15]  <b>Interpretation:</b> This is an abnormal karyotype. An isochromosome of the short (p) arm of chromosome 12 is present in five of twenty cells examined. Gain of chromosome 12p is recurrently acquired in cultures of this cell type. No other clonal abnormalities were detected at the stated band level of resolution.</p>			
Post-Thaw Viable Cell Recovery	WiCell	SOP-CH-305	≥ 15 Undifferentiated Colonies prior to passage, ≤ 30% Differentiation prior to passage, and recoverable attachment after passage	Pass
Identity by STR	UW Translational Research Initiatives in Pathology Laboratory	PowerPlex 16 HS System by Promega	Defines STR profile of deposited cell line	Pass
Sterility	Steris	ST/07	Negative	Pass
Mycoplasma	WiCell	SOP-CH-044	Negative	Pass



## Testing Reported by Provider

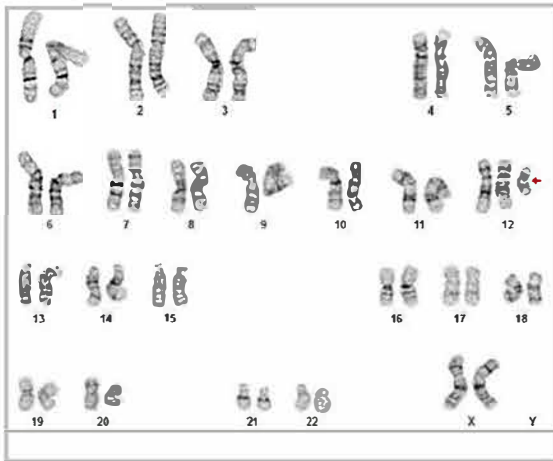
The Provider stated that some or all of the additional analyses listed below may have been performed for this cell line. For more information, publication and dbGaP links, where available, are provided on the cell line specific web page on the WiCell website.

- Tra1-60 marker expression
- mRNA expression by qPCR
- Infinium® Expanded Multi-Ethnic Genotyping Array (MEGA<sup>EX</sup>)

Approval Date	Quality Assurance Approval
04-June-2020	<p style="text-align: right;">6/4/2020</p> <p>X JKG JKG Quality Assurance Signed by: Gay, Jenna</p>

**Date Reported:** Tuesday, April 02, 2019  
**Cell Line:** MCW012i-A7156-WB67051 14443  
**Passage#:** 16  
**Date of Sample:** 3/22/2019  
**Specimen:** Human IPS  
**Results:** 47,XX,+i(12)(p10)[5]/46,XX[15]

**Cell Line Sex:** Female  
**Reason for Testing:** lot release testing  
**Investigator:** [REDACTED], WiCell



**Cell:** 35  
**Slide:** G02  
**Slide Type:** Karyotype

**Total Counted:** 20  
**Total Analyzed:** 8  
**Total Karyogrammed:** 4  
**Band Resolution:** 375 - 475

### Interpretation:

**This is an abnormal karyotype. An isochromosome of the short (p) arm of chromosome 12 is present in five of twenty cells examined. Gain of chromosome 12p is recurrently acquired in cultures of this cell type. No other clonal abnormalities were detected at the stated band level of resolution.**

**Completed by:** [REDACTED], CG(ASCP)  
**Reviewed and Interpreted by:** [REDACTED], PhD, FACMG

**Date:** \_\_\_\_\_ **Sent By:** \_\_\_\_\_ **Sent To:** \_\_\_\_\_ **QC Review By:** \_\_\_\_\_

*Limitations: This assay allows for microscopic visualization of numerical and structural chromosome abnormalities. The size of structural abnormality that can be detected is >3-10Mb, dependent upon the G-band resolution obtained from this specimen. For the purposes of this report, band level is defined as the number of G-bands per haploid genome. It is documented here as "band level", i.e., the range of bands determined from the four karyograms in this assay. Detection of heterogeneity of clonal cell populations in this specimen (i.e., mosaicism) is limited by the number of metaphase cells examined, documented here as "# of cells counted".*

*This assay was conducted solely for listed investigator/institution. The results of this assay are for research use only. Unless otherwise mutually agreed in writing, the services provided to you hereunder by WiCell Research Institute, Inc. ("WiCell") are governed solely by WiCell's Terms and Conditions of Service, found at [www.wicell.org/privacyandterms](http://www.wicell.org/privacyandterms). Any terms you may attach to a purchase order or other document that are inconsistent, add to, or conflict with WiCell's Terms and Conditions of Service are null and void and of no legal force or effect.*



HISTOLOGY - IHC - MOLECULAR - IMAGING

Department of Pathology and Laboratory Medicine  
TRIP Laboratory (Molecular)  
<https://research.pathology.wisc.edu/trip/>  
(608) 265-9168

# Short Tandem Repeat Analysis



Your Lab Partner

[characterization@wicell.org](mailto:characterization@wicell.org)  
(608) 316-4145

**Sample Report:**

14443-STR

**Sample Name on Tube:** 14443-STR

100.5 ng/μL, (A260/280=1.91)

**Sample Type:** Cells

**Cell Count:** ~2 million cells

**Requestor:**

WiCell Research Institute

Quality Assurance Department

**Receive Date:** 03/25/19

**Report Sent:** 04/01/19

**Assay Date:** 03/28/19

**File Name:** STR 190329 wmr

**Report Date:** 03/29/19

STR Locus	STR Genotype Repeat #	STR Genotype
FGA	16-18,18.2,19,19.2,20,20.2,21,21.2,22, 22.2, 23, 23.2, 24, 24.2, 25, 25.2, 26-30, 31.2, 43.2, 44.2,45.2, 46.2	Identifying information has been redacted to protect donor confidentiality. If more information is required, please, contact <a href="#">WiCell's Technical Support</a> .
TPOX	6-13	
D8S1179	7-18	
vWA	10-22	
Amelogenin	X,Y	
Penta D	2.2, 3.2, 5, 7-17	
CSF1PO	6-15	
D16S539	5, 8-15	
D7S820	6-14	
D13S317	7-15	
D5S818	7-16	
Penta E	5-24	
D18S51	8-10, 10.2, 11-13, 13.2, 14-27	
D21S11	24,24.2,25,25.2,26-28,28.2,29,29.2, 30, 30.2,31, 31.2,32,32.2,33,33.2, 34,34.2,35,35.2,36-38	
TH01	4-9,9.3,10-11,13.3	
D3S1358	12-20	

**Results:** Based on the 14443-STR cells submitted by WiCell QA dated and received on 03/25/19, this sample (Label on Tube: 14443-STR) defines the STR profile of the human stem cell line MCW012i-A7156 comprising 28 allelic polymorphisms across the 15 STR loci analyzed.

**Interpretation:** No STR polymorphisms other than those corresponding to the human MCW012i-A7156 stem cell line were detected and the concentration of DNA required to achieve an acceptable STR genotype (signal/noise) was equivalent to that required for the standard procedure (~1 ng/amplification reaction) from human genomic DNA. This result suggests that the 14443-STR sample submitted corresponds to the MCW012i-A7156 stem cell line and was not contaminated with any other human stem cells or a significant amount of mouse feeder layer cells.

**Sensitivity:** Sensitivity limits for detection of STR polymorphisms unique to either this or other human stem cell lines is ~2-5%.

X *RMB*

Digitally Signed on 04/01/19

X *WMR*

Digitally Signed on 04/01/19

██████████, BA  
TRIP Laboratory, Molecular

██████████, PhD, Director / Co-Director  
UWHC Molecular Diagnostics Laboratory / UWSMPH TRIP Laboratory

Testing was accomplished by analysis of human genetic polymorphisms at STR loci. This methodology has not yet been approved by the FDA and is for investigational use only.

Acknowledge TRIP in your publications, posters & presentations. For details, see: <http://www.pathology.wisc.edu/research/trip/acknowledging>

Unless otherwise mutually agreed in writing, the services provided to you hereunder by WiCell Research Institute, Inc. ("WiCell") are governed solely by WiCell's Terms and Conditions of Service, found at <https://www.wicell.org/media.acux/ca76d97c-862a-43f3-b02a-ab2d1e619100>. Any terms you may attach to a purchase order or other document that are inconsistent, add to, or conflict with WiCell's Terms and Conditions of Service are null and void and of no legal force or effect.



# Native Product Sterility Report



WiCell  
504 S Rosa Road, Rm 101  
Madison, WI 53719

SAMPLE #: 19032457  
DATE RECEIVED: 28-Mar-19  
TEST INITIATED: 01-Apr-19  
TEST COMPLETED: 15-Apr-19

SAMPLE NAME / DESCRIPTION: WA07 WB67046 14469  
MCW012i-A7156 WB67051 14470  
MCW014i-50000395 WB67052 14471  
MCW032i-A7214 WB67053 14472  
MCW053i-U2213 WB67054 14473  
MCW043i-U2326 WB67056 14474  
MCW045i-U2033 WB67057 14475  
WC042e-H1dCGG0-B7 WB67063 14476  
WC043e-H13dCGG0-23 WB67069 14477  
WC044i-IVF15-36 WB67062 14478

UNIQUE IDENTIFIER: NA

### TEST RESULTS:

# Tested	# Positives (Growth)	- Control
10	1	2 Negatives

### TEST SUMMARY:

# Samples	Media Type	Volume (mL)	Incubation Temperature (° C)	Incubation Duration (Days)
10	TSB	40	20-25	14
10	TSB	40	30-35	14

REFERENCE: Processed according to LAB-003: Sterility Test Procedure

PD #: 000053

TEST METHODOLOGY: USP - Direct Transfer

COMMENTS: Sample labeled as WC044i-IVF15-36 WB67062 14478 was positive

REVIEWED BY 

DATE 16 Apr 19

Specific test results may not be indicative of the characteristics of any other samples from the same lot or similar lots. This test report shall not be reproduced, except in full, without prior written approval. Liability is limited to the costs of the tests. Results applied to samples as received.



# Mycoplasma Assay Report

PCR-based assay performed by WiCell

Lot Release Testing

25Mar19

FORM SOP-CH-044.03

Version B Edition 01

#	Sample Name	Result	Comments/Suggestions
1	MCW012i-A7156-WB67051 14443	Negative	Band was not seen at 270bp, indicating the absence of mycoplasma.
2	Positive (+) Control	Positive	
3	Negative (-) Control	Negative	

Reported by: [REDACTED], Cell Culture Specialist

Reviewed by: [REDACTED], Cell Culture Specialist

Date: \_\_\_\_\_ Sent By: \_\_\_\_\_ Sent To: \_\_\_\_\_

*Unless otherwise mutually agreed in writing, the services provided to you hereunder by WiCell Research Institute, Inc. ("WiCell") are governed solely by WiCell's Terms and Conditions of Service, found at [www.wicell.org/privacyandterms](http://www.wicell.org/privacyandterms). Any terms you may attach to a purchase order or other document that are inconsistent, add to, or conflict with WiCell's Terms and Conditions of Service are null and void and of no legal force or effect.*

*A gel image is available upon request.*