



## Thaw and Culture Details

Cell Line Name	<b>MCW065i-40001296</b>
WiCell Lot Number	<b>WB67165</b>
Parent Material	MCW065i-40001296-DB66359
Provider	Medical College of Wisconsin – Laboratory of Dr. Ulrich Broeckel
Banked By	WiCell
Thaw and Culture Recommendations	WiCell recommends thawing 1 vial into 2 wells of a 6 well plate.
Culture Platform	Feeder Independent
	Medium: TeSR™-E8™
	Matrix: Matrigel®
Protocol	WiCell Feeder Independent E8 Medium Protocol
Passage Number	p16 These cells were cultured for 15 passages prior to freeze and post colony selection. WiCell adds +1 to the passage number at freeze to best represent the overall passage number of the cells at thaw. Plated cells at thaw should be labeled passage 16.
Date Vialied	23-April-2019
Vial Label	MCW065i-40001296 p16 WB67165
Biosafety and Use Information	Appropriate biosafety precautions should be followed when working with these cells. The end user is responsible for ensuring that the cells are handled and stored in an appropriate manner. WiCell is not responsible for damages or injuries that may result from the use of these cells. Cells distributed by WiCell are intended for research purposes only and are not intended for use in humans.

## Testing Performed by WiCell

Test Description	Test Provider	Test Method	Test Specification	Result
Karyotype by G-banding	WiCell	SOP-CH-003	Expected karyotype	See Report
	<b>Results:</b> 46,XX,del(18)(q21.3)[4]/46,XX[16] <b>Interpretation:</b> This is an abnormal karyotype. A terminal deletion of the long (q) arm of chromosome 18 is present in four of twenty cells examined. Loss of chromosome 18q is recurrently acquired in pluripotent stem cell cultures. No other clonal abnormalities were detected at the stated band level of resolution.			
Post-Thaw Viable Cell Recovery	WiCell	SOP-CH-305	≥ 15 Undifferentiated Colonies prior to passage, ≤ 30% Differentiation prior to passage, and recoverable attachment after passage	Pass
Identity by STR	UW Translational Research Initiatives in Pathology Laboratory	PowerPlex 16 HS System by Promega	Defines STR profile of deposited cell line	Pass
Sterility	Steris	ST/07	Negative	Pass
Mycoplasma	WiCell	SOP-CH-044	Negative	Pass



## Testing Reported by Provider

The Provider stated that some or all of the additional analyses listed below may have been performed for this cell line. For more information, publication and dbGaP links, where available, are provided on the cell line specific web page on the WiCell website.

- Tra1-60 marker expression
- mRNA expression by qPCR
- Infinium® Expanded Multi-Ethnic Genotyping Array (MEGA<sup>EX</sup>)

Approval Date	Quality Assurance Approval
04-June-2020	<p style="text-align: right;">6/4/2020</p> <p>X JKG</p> <p><small>JKG Quality Assurance Signed by Gay, Jenna</small></p>



## Chromosome Analysis Report: 078260

**Date Reported:** Friday, September 20, 2019

**Cell Line Sex:** Female

**Cell Line:** MCW065i-40001296-WB67165  
14963

**Reason for Testing:** lot release testing

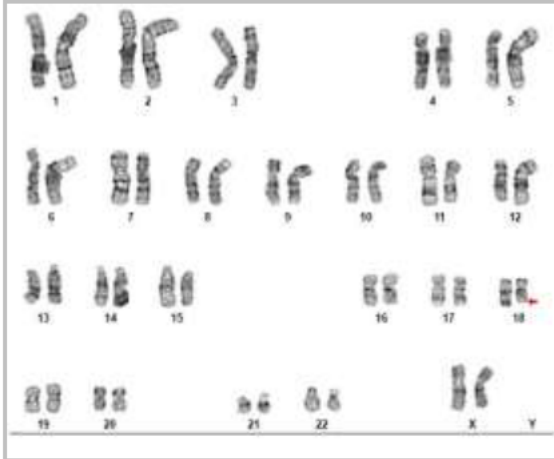
**Passage#:** 16

**Date of Sample:** 9/11/2019

**Investigator:** [REDACTED], WiCell

**Specimen:** Human iPSC

**Results:** 46,XX,del(18)(q21.3)[4]/46,XX[16]



**Cell:** 2

**Slide:** G03

**Slide Type:** Karyotype

**Total Counted:** 20

**Total Analyzed:** 8

**Total Karyogrammed:** 5

**Band Resolution:** 350 - 425

### Interpretation:

**This is an abnormal karyotype. A terminal deletion of the long (q) arm of chromosome 18 is present in four of twenty cells examined. Loss of chromosome 18q is recurrently acquired in pluripotent stem cell cultures. No other clonal abnormalities were detected at the stated band level of resolution.**

**Completed by:** [REDACTED]

**Reviewed and Interpreted by:** [REDACTED], PhD, FACMG

**Date:** \_\_\_\_\_ **Sent By:** \_\_\_\_\_ **Sent To:** \_\_\_\_\_ **QC Review By:** \_\_\_\_\_

*Limitations: This assay allows for microscopic visualization of numerical and structural chromosome abnormalities. The size of structural abnormality that can be detected is >3-10Mb, dependent upon the G-band resolution obtained from this specimen. For the purposes of this report, band level is defined as the number of G-bands per haploid genome. It is documented here as "band level", i.e., the range of bands determined from the four karyograms in this assay. Detection of heterogeneity of clonal cell populations in this specimen (i.e., mosaicism) is limited by the number of metaphase cells examined, documented here as "# of cells counted".*

*This assay was conducted solely for listed investigator/institution. The results of this assay are for research use only. Unless otherwise mutually agreed in writing, the services provided to you hereunder by WiCell Research Institute, Inc. ("WiCell") are governed solely by WiCell's Terms and Conditions of Service, found at [www.wicell.org/privacyandterms](http://www.wicell.org/privacyandterms). Any terms you may attach to a purchase order or other document that are inconsistent, add to, or conflict with WiCell's Terms and Conditions of Service are null and void and of no legal force or effect.*



HISTOLOGY - IHC - MOLECULAR - IMAGING

Department of Pathology and Laboratory Medicine  
TRIP Laboratory (Molecular)  
<https://research.pathology.wisc.edu/trip-home/>  
(608) 265-9168

# Short Tandem Repeat Analysis



[characterization@wicell.org](mailto:characterization@wicell.org)  
(608) 316-4145

**Sample Report:**  
14963-STR  
**Sample Name on Tube:** 14963-STR  
69.8 ng/ $\mu$ L, (A260/280=1.92)  
**Sample Type:** Cells  
**Cell Count:** ~2 million cells

**Requestor:**  
WiCell Research Institute  
Quality Assurance Department

**Receive Date:** 09/30/19  
**Report Sent:** 10/04/19  
**Assay Date:** 10/01/19  
**File Name:** STR 191002 wmr  
**Report Date:** 10/03/19

STR Locus	STR Genotype Repeat #	STR Genotype
FGA	16-18,18.2,19,19.2,20,20.2,21,21.2,22, 22.2, 23, 23.2, 24, 24.2, 25, 25.2, 26-30, 31.2, 43.2, 44.2,45.2, 46.2	Identifying information has been redacted to protect donor confidentiality. If more information is required, please, contact <a href="#">WiCell's Technical Support</a> .
TPOX	6-13	
D8S1179	7-18	
vWA	10-22	
Amelogenin	X,Y	
Penta D	2.2, 3.2, 5, 7-17	
CSF1PO	6-15	
D16S539	5, 8-15	
D7S820	6-14	
D13S317	7-15	
D5S818	7-16	
Penta E	5-24	
D18S51	8-10, 10.2, 11-13, 13.2, 14-27	
D21S11	24,24.2,25,25.2,26-28,28.2,29,29.2, 30, 30.2,31, 31.2,32,32.2,33,33.2, 34,34.2,35,35.2,36-38	
TH01	4-9,9.3,10-11,13.3	
D3S1358	12-20	

**Results:** Based on the 14963-STR cells submitted by WiCell QA dated and received on 09/30/19, this sample (Label on Tube: 14963-STR) defines the STR profile of the human cell line MCW065i-40001296 comprising 25 allelic polymorphisms across the 15 STR loci analyzed.

**Interpretation:** No STR polymorphisms other than those corresponding to the human MCW065i-40001296 cell line were detected and the concentration of DNA required to achieve an acceptable STR genotype (signal/noise) was equivalent to that required for the standard procedure (~1 ng/amplification reaction) from human genomic DNA. This result suggests that the 14963-STR sample submitted corresponds to the MCW065i-40001296 cell line and was not contaminated with any other human cells or a significant amount of mouse feeder layer cells.

**Sensitivity:** Sensitivity limits for detection of STR polymorphisms unique to either this or other human cell lines is ~2-5%.

X *RMB*

Digitally Signed on 10/04/19

X *WMR*

Digitally Signed on 10/04/19

BA  
TRIP Laboratory, Molecular

, PhD, Director / Co-Director  
UWHC Molecular Diagnostics Laboratory / UWSMPH TRIP Laboratory

Testing was accomplished by analysis of human genetic polymorphisms at STR loci. This methodology has not yet been approved by the FDA and is for investigational use only.

Acknowledge TRIP in your publications, posters & presentations. For details, see: <https://research.pathology.wisc.edu/acknowledging-trip/>  
Unless otherwise mutually agreed in writing, the services provided to you hereunder by WiCell Research Institute, Inc. ("WiCell") are governed solely by WiCell's Terms and Conditions of Service, found at <https://www.wicell.org/media.acux/ca76d97c-862a-43f3-b02a-ab2d1e619100>. Any terms you may attach to a purchase order or other document that are inconsistent, add to, or conflict with WiCell's Terms and Conditions of Service are null and void and of no legal force or effect.

# Native Product Sterility Report



WiCell  
504 S Rosa Road, Rm 101  
Madison, WI 53719

SAMPLE #: 19050849  
DATE RECEIVED: 09-May-19  
TEST INITIATED: 15-May-19  
TEST COMPLETED: 29-May-19

SAMPLE NAME / DESCRIPTION:

MCW057i-A3286	WB67153	14647
B2M-/Etrimer Elf1	WB67154	14648
MCW033i-A7195	WB67156	14649
MCW061i-40000329	WB67157	14650
MCW059i-40001067	WB67158	14651
MCW070i-40002330	WB67159	14652
B2M-/ Elf1	WB67160	14653
JHU210i	WB67162	14654
MCW052i-40001760	WB67163	14655
B2M-/Edimer Elf1	WB67155	14656
MCW063i-40000190	WB67164	14657
MCW065i-40001296	WB67165	14658
B2M-/Edimer(preCre)Elf1	WB67166	14659
MCW069i-40000268	WB67167	14660
MCW093i-40000435	WB67168	14661
PACS1003i-GM27161	DB67161	14662
STAN011i-123-1	DB31129	14663
STAN012i-123-2	DB31135	14664
STAN015i-178-1	DB31094	14665
STAN016i-178-2	DB31107	14666

UNIQUE IDENTIFIER: NA

## TEST RESULTS:

# Tested	# Positives (Growth)	- Control
20	0	2 Negatives

## TEST SUMMARY:

# Samples	Media Type	Volume (mL)	Incubation Temperature (° C)	Incubation Duration (Days)
20	TSB	40	20-25	14
20	FTG	40	30-35	14

## REFERENCE:

Processed according to LAB-003: Sterility Test Procedure

## PD #:

000053

## TEST METHODOLOGY:

USP - Direct Transfer





# Mycoplasma Assay Report

PCR-based assay performed by WiCell

WiCell

FORM SOP-CH-048.01

Version A Edition 01

Sample Name	Result	Comments/Suggestions
WIZ03e-H9CAGhM3Dq-WB67299 15000 (78265)	Negative	Band was not seen at 270bp, indicating the absence of mycoplasma.
INC149 11SEP19AP (78266)	Negative	Band was not seen at 270bp, indicating the absence of mycoplasma.
MCW021i-50001743-WB67214 14964 (78267)	Negative	Band was not seen at 270bp, indicating the absence of mycoplasma.
WC050i-17097-02-01-WB67288 15003 (78268)	Negative	Band was not seen at 270bp, indicating the absence of mycoplasma.
MCW065i-40001296-WB67165 14963 (78269)	Negative	Band was not seen at 270bp, indicating the absence of mycoplasma.
MCW066i-U2368-WB67169 14962 (78270)	Negative	Band was not seen at 270bp, indicating the absence of mycoplasma.
INC123 11SEP19KR (78271)	Negative	Band was not seen at 270bp, indicating the absence of mycoplasma.
WC054i-333-1-2-06-DB67304 15023 (78296)	Negative	Band was not seen at 270bp, indicating the absence of mycoplasma.
WC056i-333-1-2-12-DB67306 15025 (78297)	Negative	Band was not seen at 270bp, indicating the absence of mycoplasma.
WC055i-333-1-2-09-DB67305 15024 (78298)	Negative	Band was not seen at 270bp, indicating the absence of mycoplasma.
Positive (+) Control	Positive	
Negative (-) Control	Negative	

Reported by: [REDACTED] Cell Culture Specialist

Reviewed by: [REDACTED], Cell Culture Specialist

*Unless otherwise mutually agreed in writing, the services provided to you hereunder by WiCell Research Institute, Inc. ("WiCell") are governed solely by WiCell's Terms and Conditions of Service, found at [www.wicell.org/privacyandterms](http://www.wicell.org/privacyandterms). Any terms you may attach to a purchase order or other document that are inconsistent, add to, or conflict with WiCell's Terms and Conditions of Service are null and void and of no legal force or effect.*

*A gel image is available upon request.*