



Certificate of Analysis

Thaw and Culture Details

Cell Line Name	WC026i-5807-3	
WiCell Lot Number	WB67904	
Parent Material	WC026i-5807-3-WB66538	
Provider/Client	University of Wisconsin – Laboratory of Anita Bhattacharyya	
Banked By	WiCell	
Thaw and Culture Recommendations	WiCell recommends thawing 1 vial into 3 wells of a 6 well plate using mTeSR™ Plus and Matrigel®.	
Protocol	WiCell Feeder Independent Pluripotent Stem Cell Protocol	
Culture Platform Prior to Freeze	Medium: mTeSR™ Plus	Matrix: Matrigel®
Passage Number	p12 Cells were cultured for 11 passages prior to freeze and post reprogramming. Plated cells at thaw should be labeled passage 12.	
Date Vialied	17-JUNE-2022	
Vial Label	WC026i-5807-3 p12 WB67904	
Biosafety and Use Information	Appropriate biosafety precautions should be followed when working with these cells. The end user is responsible for ensuring that the cells are handled and stored in an appropriate manner. WiCell is not responsible for damages or injuries that may result from the use of these cells. Cells distributed by WiCell are intended for research purposes only and are not intended for use in humans.	



Certificate of Analysis

Results

Test Description	Test Provider	Test Method	Test Specification	Result
Karyotype	WiCell	G-T-L Banding performed on 20 metaphase cells	Expected karyotype	See Report
	Results: 46,XX Interpretation: This is a normal karyotype; no clonal abnormalities were detected at the stated band level of resolution.			
Post-Thaw Viable Cell Recovery	WiCell	Thaw using specified Thaw & Culture Recommendations	≥ 15 Undifferentiated Colonies prior to passage, ≤ 30% Differentiation prior to passage, and recoverable attachment after passage	Pass
Identity by STR	WiCell	PowerPlex 16 HS System by Promega™	Consistent with STR profile of deposited cell line	See Report
Mycoplasma	WiCell	PCR	Amplification of mycoplasma specific DNA detected with negative result	Pass
Sterility	Steris	Native Product Direct Transfer using FTM and TSB (ST/07)	Negative for growth following 14 days of culture	Pass

Approval Date	WiCell Quality Assurance Approval
04-August-2022	<p style="text-align: right;">8/A/2022</p> <p>X DLG _____ JKG WiCell Quality Assurance Signed by: Graham, Dawn</p>

Date Reported: Wednesday, July 6, 2022

Cell Line: WC026i-5807-3-WB67904

Submitted Passage #: 12

Date of Sample: 6/30/2022

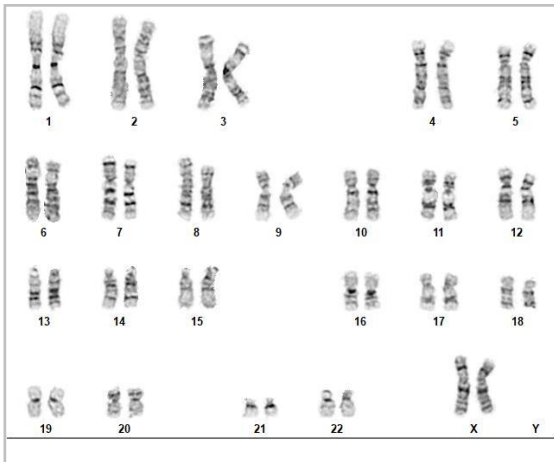
Specimen: Human iPSC

Results: 46,XX

Cell Line Sex: Female

Reason for Testing: LOT_RELEASE

Investigator: WiCell Stem Cell Bank, WiCell



Cell: 21

Slide: G01

Slide Type: Karyotype

Total Counted: 20

Total Analyzed: 8

Total Karyogrammed: 4

Band Resolution: 450 - 500

Interpretation:

This is a normal karyotype; no clonal abnormalities were detected at the stated band level of resolution.

Completed by: Erica Schutter, CG(ASCP)

Reviewed and Interpreted by: Vanessa Horner, PhD, FACMG

For internal use only

Date: _____ **Sent By:** _____ **Sent To:** _____ **QC Review By:** _____

Limitations: This assay allows for microscopic visualization of numerical and structural chromosome abnormalities. The size of structural abnormality that can be detected is >3-10Mb, dependent upon the G-band resolution obtained from this specimen. For the purposes of this report, band level is defined as the number of G-bands per haploid genome. It is documented here as "band level", i.e., the range of bands determined from the four karyograms in this assay. Detection of heterogeneity of clonal cell populations in this specimen (i.e., mosaicism) is limited by the number of metaphase cells examined, documented here as "# of cells counted".

This assay was conducted solely for listed investigator/institution. The results of this assay are for research use only. Unless otherwise mutually agreed in writing, the services provided to you hereunder by WiCell Research Institute, Inc. ("WiCell") are governed solely by WiCell's Terms and Conditions of Service, found at www.wicell.org/privacyandterms. Any terms you may attach to a purchase order or other document that are inconsistent, add to, or conflict with WiCell's Terms and Conditions of Service are null and void and of no legal force or effect.



Short Tandem Repeat

Requestor: WiCell Stem Cell Bank, WiCell

Samples Received: 30Jun22, 01Jul22

STR Amplification Date: 06Jul22

Form SOP-89.01

Version 8.0

Sample Name	WC007i-FX13-2-WB67902 p25	WC026i-5807-3-WB67904 p12	UWWC1-DS2U-WB67907 p55	STAN088i-060C1-WB67908 p13
Label on tube	92694	92695	92696	92716
FGA	Identifying information has been redacted to protect donor confidentiality. If more information is required, please contact info@wicell.org			
TPOX				
D8S1179				
vWA				
Amelogenin				
Penta_D				
CSF1PO				
D16S539				
D7S820				
D13S317				
D5S818				
Penta_E				
D18S51				
D21S11				
TH01				
D3S1358				
Allelic Polymorphisms	25	27	29	30
Matches*	See Matches Comment	67690, 67701, 67790	17989, 71618(96.77%), 21511(93.75%)	80639
Comments				

**Note: The STR profile of the following sample is an exact match for the given sample/samples.*



Short Tandem Repeat

Requestor: WiCell Stem Cell Bank, WiCell

Samples Received: 30Jun22, 01Jul22

STR Amplification Date: 06Jul22

Assay Description: STR analysis is performed using the PowerPlex 16 HS System by Promega™. Results are reported as 13 CODIS STR markers, Amelogenin for gender determination and two low-stutter, highly discriminating pentanucleotide STR markers.

Results: The genotypic profiles comprise a range of 25-30 allelic polymorphisms across the 15 STR loci analyzed.

Interpretation: The concentration of DNA required to achieve an acceptable STR genotype (signal/ noise) was equivalent to that required for the standard procedure (~1 ng/amplification reaction) from human genomic DNA. These results suggests that the cells submitted correspond to the cell lines as named and were not contaminated with any other human cells or a significant amount of mouse feeder layer cells.

Sensitivity: Sensitivity limits for detection of STR polymorphisms unique to either this or other human cell lines is ~2-5%.

Matches: Sample 92694 is a 100% match to 89670, 80471, 75554, 73738, 72498, 72495, 72494, 72493, 72492, 72491 and additional profiles. Additional matches can be provided upon request.

7/7/2022	7/8/2022	7/8/2022
X Amber Kuhn	X Molly Miles	X Hunter Hefti
<hr/> Tech #1 Characterization Signed by: Kuhn, Amber	<hr/> Tech #2 Characterization Signed by: Miles, Molly	<hr/> QA Review Quality Assurance Signed by: Hefti, Hunter

Unless otherwise mutually agreed in writing, the services provided to you hereunder by WiCell Research Institute, Inc. ("WiCell") are governed solely by WiCell's Terms and Conditions of Service, found at www.wicell.org/privacyandterms. Any terms you may attach to a purchase order or other document that are inconsistent, add to, or conflict with WiCell's Terms and Conditions of Service are null and void and of no legal force or effect.

Raw data is available upon request.



Mycoplasma Assay Report

PCR-based assay performed by WiCell
WiCell Stem Cell Bank, WiCell
01Jul22

Form SOP-83.01
Version 5.0

Sample Name	Result	Interpretation
WC007i-FX13-2-WB67902 p25 (92694)	Negative	Band was not seen at 270bp, indicating the absence of mycoplasma.
WC026i-5807-3-WB67904 p12 (92695)	Negative	Band was not seen at 270bp, indicating the absence of mycoplasma.
UWWC1-DS2U-WB67907 p55 (92696)	Negative	Band was not seen at 270bp, indicating the absence of mycoplasma.
STAN088i-060C1-WB67908 p13 (92716)	Negative	Band was not seen at 270bp, indicating the absence of mycoplasma.
Positive (+) Control	Positive	
Negative (-) Control	Negative	

Assay Description
Sample is tested for presence of mycoplasma using EZ-PCR™ Mycoplasma Detection Kit (Sartorius).

7/5/2022	7/6/2022	7/6/2022
X Kaylie Petersen <hr/> Tech #1 Characterization Signed by: Petersen, Kaylie	X Molly Miles <hr/> Tech #2 Characterization Signed by: Miles, Molly	X Hunter Hefti <hr/> QA Review Quality Assurance Signed by: Hefti, Hunter

Unless otherwise mutually agreed in writing, the services provided to you hereunder by WiCell Research Institute, Inc. ("WiCell") are governed solely by WiCell's Terms and Conditions of Service, found at www.wicell.org/privacyandterms. Any terms you may attach to a purchase order or other document that are inconsistent, add to, or conflict with WiCell's Terms and Conditions of Service are null and void and of no legal force or effect.

A gel image is available upon request.

Native Product Sterility Report



WiCell
504 S Rosa Road, Rm 101
Madison, WI 53719

SAMPLE #: 22061406
DATE RECEIVED: 23-Jun-22
TEST INITIATED: 01-Jul-22
TEST COMPLETED: 15-Jul-22

SAMPLE NAME / DESCRIPTION: WC-24-02-DS-M-WB67887
STAN220i-504C2-DB35478
STAN222i-509C2-DB44165
STAN223i-509C3-DB44168
WC007i-FX13-2-WB67902
WIZ03e-H9CAGhM3Dq-WB67889
WC026i-5807-3-WB67904
WIZ04e-H9CAGmChry-WB67905
SCR6904i-WB67890
PENN078i-SV10-DB36423

UNIQUE IDENTIFIER: N/A

TEST RESULTS:

# Tested	# Positives (Growth)	- Control
10	0	2 Negatives

TEST SUMMARY:

# Samples	Media Type	Volume (mL)	Incubation Temperature (° C)	Incubation Duration (Days)
10	TSB	40	20-25	14
10	FTG	40	30-35	14

REFERENCE: Processed according to LAB-003: Sterility Test Procedure

PD #: 000053

TEST METHODOLOGY: USP - Direct Transfer

COMMENTS: NA

REVIEWED BY 

DATE 18 JUL 2022

Specific test results may not be indicative of the characteristics of any other samples from the same lot or similar lots. This test report shall not be reproduced, except in full, without prior written approval. Liability is limited to the costs of the tests. Results applied to samples as received.